

SWEETWATER
COUNTY
SCHOOL
DISTRICT
NUMBER
ONE



DISTRICT
REPORT
CARD
2010-2011

SWEETWATER COUNTY
SCHOOL DISTRICT NUMBER ONE

*Office
of
Curriculum
and
Instruction*

Paul E. Grube
Superintendent of Schools

Dr. Ronald W. Kalicki
Director:
Curriculum and Instruction

Brian P. Kaumo
Coordinator:
Assessment and Evaluation

SWEETWATER COUNTY SCHOOL DISTRICT NUMBER ONE

Board of Trustees

MISSION STATEMENT:

TO PROVIDE A QUALITY EDUCATION FOR ALL STUDENTS

WE WILL ACCOMPLISH THIS BY:

- ✓ **MAKING STUDENTS OUR FIRST PRIORITY**
- ✓ **UTILIZING COMMUNITY PARTNERSHIPS**
- ✓ **PROMOTING PROFESSIONAL EXCELLENCE**
- ✓ **BEING A BOARD COMMITTED TO EXCELLENCE IN EDUCATION**
- ✓ **PROVIDING A SAFE, ORDERLY AND EFFICIENT ENVIRONMENT FOR LEARNING**

SWEETWATER COUNTY SCHOOL DISTRICT NUMBER ONE

HISTORICAL ENROLLMENT

School	October 1, 2008	October 1, 2009	October 1, 2010
Desert View Elementary	404	345	328
Northpark Elementary	326	318	318
Overland Elementary	333	318	313
Sage Elementary	*	347	384
Walnut Elementary	347	325	330
Westridge Elementary	437	419	424
Lincoln Elementary	289	**242	227
White Mountain Elementary	656	565	558
Farson-Eden	160	178	170
Wamsutter	83	79	70
East Junior High School	686	689	764
Rock Springs High School	1183	1163	1227
Independence High School	61	54	47
Total	4965	5042	5160

SCHOOL IMPROVEMENT INITIATIVES

The school improvement process in Sweetwater County School District Number One follows the state-supported NCA (North Central Association) accreditation model. This school improvement model starts with analyzing student performance data and school/community needs in the first year, developing action plans for improvement in the second year, and implementing plans for improvement in the third, fourth, and fifth years. Each school must be able to demonstrate improvement over the years of the process to be accredited by the state. The fourteen schools are working collaboratively with the district to improve student performance.

Each of our schools has formed an active School Improvement Team comprised of classroom teachers, support staff, administrators and, in some instances, parent representatives. Each School Improvement Team, which will also serve as the NCA Steering Committee, is chaired by a non-administrative staff member to encourage teacher leadership, involvement and commitment. Representatives from all eleven School Improvement Teams meet to work together on the NCA school improvement phases. These activities will include an overview of change research, introduction to the NCA process, district and school data analysis, profile building, establishing district targets and building accountable action plans with systemic professional development. While these are ambitious goals, they provide the framework for focused, continuing school improvement activities in Sweetwater County School District Number One.

Between general meeting dates, site School Improvement Teams meet regularly to analyze school data, update each school profile, administer and analyze the School Capacity Instrument and determine unique interventions for students in their school consistent with district improvement targets.

Sweetwater County School District Number One has identified two district wide goals for all students. They are:

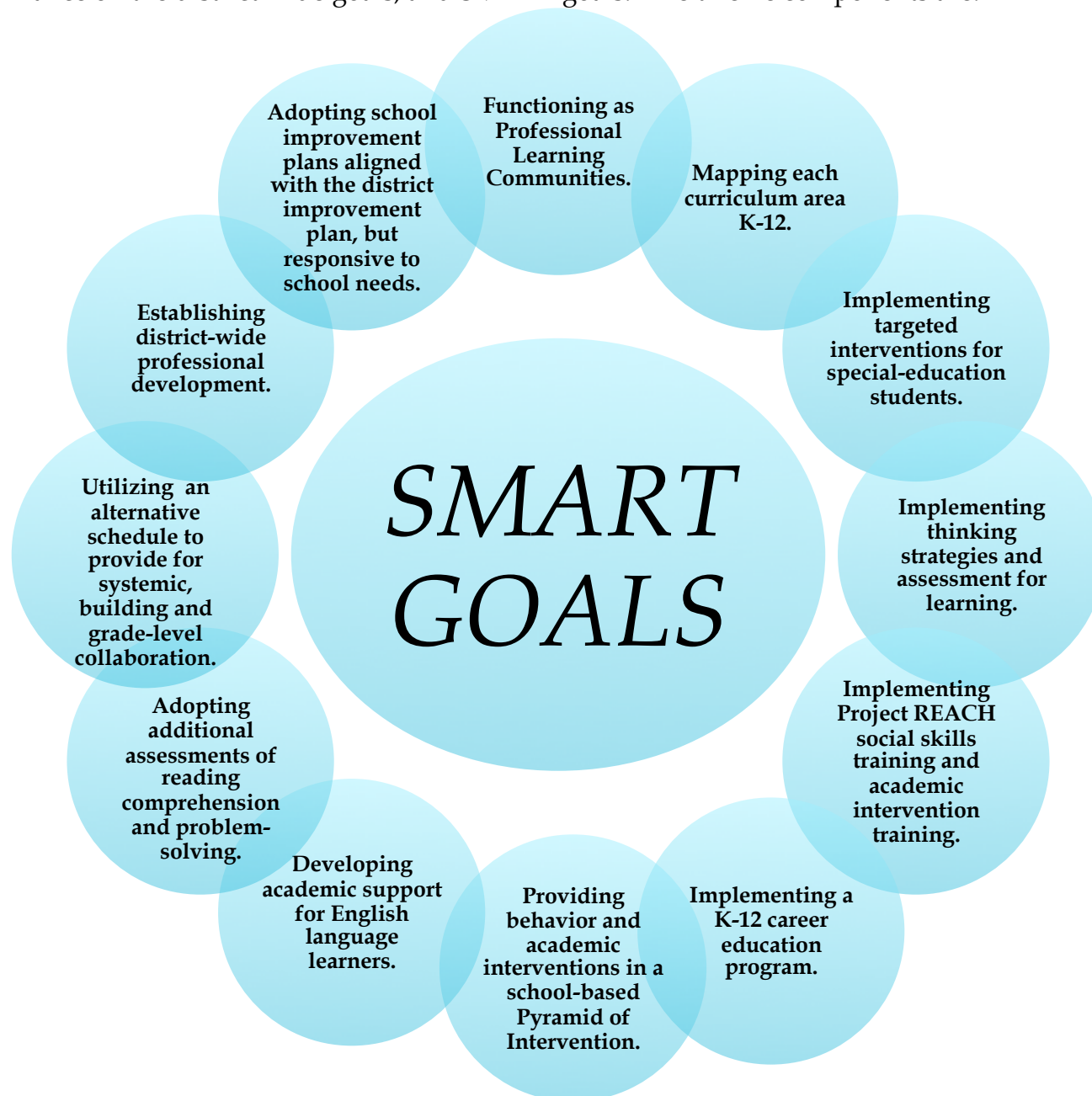
1. That all students will improve in reading comprehension; and
2. That all students will improve in problem solving skills.

These goals apply to all students, in all subject areas, and at all grade levels.

In addition, Sweetwater County School District Number One has established three specific SMART goals to guide the improvement process:

1. An additional 15% of all students will be proficient or advanced in PAWS language arts in 2010; another 15% will be proficient or advanced in 2011. (Example: Elementary language arts will move from 48.4% proficient and advanced to 63.4% proficient and advanced.)
2. Each subgroup will have an additional 20% of students who are proficient or advanced in each of the next two year. (Example: Free and reduced lunch students at the junior high level will move from 38.6% proficient and advanced in PAWS language arts to 58.6%.)
3. Graduation rates will increase 6% per year for the next two years. (Example: District graduation rate will move from 67% to 73%.)

To accomplish these goals, the combined NCA School Improvement Teams have developed unified plans for the district and the schools. These action plans focus resources and activities on twelve components which will move all students to higher performance on the district wide goals, and SMART goals. The twelve components are:



These plans are continuing to be implemented in the 2010-2011 school year. To implement the plans, elementary grade level teams and secondary content area teams are using time to work collaboratively to improve student achievement.

TITLE III PROGRAM (ELL)

Federal and State mandates, outlined in Title III of the No Child Left Behind Law, clearly state that school districts must provide for the education of English Language Learners (ELL). The purpose of this law is to ensure that children, who are limited in their English Language abilities/knowledge, attain English proficiency, develop high levels of academic attainment in English, and meet the challenging State academic content and student academic achievement standards. Sweetwater School District Number One has established a K-12 structured ELL program to meet not only the mandates of this law, but also, and most importantly, to meet the needs of the students involved. There are currently over 300 identified English Language Learner students receiving Title III program assistance in Sweetwater School District Number One. These students are initially identified by information given on the Home Language Survey (HLS) that is completed by a parent/guardian at registration. If the HLS indicates there is a language other than English spoken in the home, the district is required by law to individually screen the student using the WIDA-ACCESS Placement Test (W-APT). If the student attains a score of Level 1-4 on the W-APT, that student then qualifies for direct Title III (ELL) services. The parents of a student qualifying for direct ELL services are then contacted, screening results are reviewed, and a determination of approval/refusal for ELL services is given. Parents have the legal right to accept or refuse the enrollment of their student in the program, to request removal of their student from the program at any time, or to choose another program or method of instruction, if one is available. The implementation of this program has included the additional hiring of both certified and classified staff, instituting appropriate K-12 curriculum materials, providing professional development for district staff and administrators, and facilitating parent involvement. Student information, including policy handbooks at all school levels, has been translated into Spanish (as this is by far the most common language involved) to facilitate parental understanding relating to district procedures. Home languages, other than Spanish, are supported through personal conferences with a native speaker in attendance for translation purposes.

For Spanish translation assistance, parent may contact either Gloria Luzmoor, at (307) 352-3420 or (307) 352-3400, ext. 1257 or Monica Anderson at (307) 352-3400, ext. 1221.

FEDERAL FUNDING PARTICIPATION

Each year Sweetwater School District Number One receives federal funding to support a variety of programs and projects, including professional development, technology innovation, maintenance of safe and drug free schools and vocational education connections. In recent years, this funding has supported the district's expansion of its English Language Learner program, classroom research on how integrating technology improves student learning, and professional development to improve reading comprehension and problem-solving skills. Each year the district seeks members of the community, including students and parents, to serve on grant planning review committees. To inquire about participating in this planning process or to access information and contribute suggestions for the use of grant funding, contact the Office of Curriculum and Instruction at (307) 352-3400.

TECHNOLOGY

Mobile computing devices are the focus for the 2010-2011 school year. The District has placed iPod touches in all buildings and placed iPads in Lincoln Elementary, East Junior High and Rock Springs High School. Our mobile device program is focusing on all content areas within the curriculum. Through the Apple Volume Purchase Program, we are able to provide grade level and content specific apps to help students with Literacy, Language Arts, Math, Science, Social Studies and Physical Education. The District will greatly expand the program during the 2011-2012 school year. It is the belief of the Technology Director that iPad type devices will eventually become the single most used computing device in our schools. These devices will eventually house the students text books, daily work, assignments and applications needed for furthering our 21st century learning environment.

Technology work for the 2010-2011 school year also focuses on the following items:

- ❑ Image Now – Building our electronic repository for HR and Accounting documents. Student documents will be included in the 2011-2012 school year.
- ❑ District Pulse – Continuing the work to integrate assessment data into our Data Warehouse
- ❑ Preparing for the move of EJH to the White Mountain building

- ❑ EJH computing upgrade – to prepare for the pending move of EJH to the White Mountain building, we have upgraded the computers in the business labs and library. These new machines will move with the building to White Mountain
- ❑ Preparing for the opening for the new 5th and 6th elementary building next to Sage Elementary
- ❑ Deployment of UniFlow for Copier and Printing control and management
- ❑ Data Domain – Backup and archival of the District's electronic documents.

The 10-11 School year brings a major upgrade to the Rock Springs High School Network. Starting in 09-10, we began the process of upgrading the network switching infrastructure. During the 2010-2011 school year we will complete the network switching upgrade, upgrade the wireless environment and deploy a new Voice Over IP Telephony system for the building.

This school year brings an exciting change for our District with the deployment of My Big Campus. My Big Campus is a product provided by Lightspeed Systems and will allow us to substantially further our collaboration goals. Staff and students now have the ability to communicate and collaborate with BLOGs, Email, Wikis and Discussion Boards within one tool. Our deployment of My Big Campus will allow us to consolidate vast amounts of information into one concise location. Students will be able to use My Big Campus to keep in touch with their classrooms by getting their homework assignment online, storing class work in their online storage area and communicate with peers and teachers through the wide range of communication tools on My Big Campus.

At the start of the 2010-2011 school year, we launched a new Food Service Point of Sale System called One Source by Horizon Software. Parents now have the ability to make payments for the school lunch program online via MealPayPlus. Please visit <https://www12.mealpayplus.com/Default.aspx> and set-up your MealPayPlus account. With MealPayPlus, you will be able to check on lunch balances, make credit card payments into your student's lunch account and delegate which purchases can be made in the school cafeteria.

In addition to the above, we will continue our 21st Century classroom development. This involves the continued installation and deployment of Promethean Boards, Document Cameras, Digital Projectors, Interactive Response Systems along with our Intervention software (e.g. PLATO, Read180, Compass Learning, Expert 21, Fasttmath, etc.).

We encourage all parents to stay in touch with their student's education progress by utilizing PowerSchool to check on attendance, grades and lunch balances. Students may also access PowerSchool to keep abreast of their academic progress. To access PowerSchool, please visit <http://pspublic.sw1.k12.wy.us/public>. If you are not sure of your PowerSchool username or password, please contact your student's school and they will be able to provide you with the necessary information.

In addition to PowerSchool, you may also obtain information about the district and your student's school by visiting our home page - <http://www.sweetwater1.org>. Our home page provides you with school information, policies, handbooks, and lunch menus. Check our website regularly to stay in touch with district happenings.

Questions regarding the Sweetwater County School District Number One's Information Technology program and capabilities may be sent to comments@sw1.k12.wy.us.

2009-2010 ADEQUATE YEARLY PROGRESS (AYP) STATUS

As required under the No Child Left Behind Act (NCLB), the Wyoming Department of Education must evaluate the academic achievement of each school and district in the state. For the 2009-2010 school year, Farson-Eden High School did not meet AYP for the first year. Additionally, the following schools did not meet AYP for the amount of consecutive years indicated: Independence High School (six), East Junior High School (four), Rock Springs High School (two), Desert View Elementary (two), and Westridge Elementary (two); all of which have been designated as schools in need of improvement. These schools have developed and submitted a school improvement plan to the Wyoming Department of Education.

In accordance with the Title III Federal Statute (NCLB), the state of Wyoming allows an exemption for recently arrived Limited English Proficient (LEP) students from the Reading/Language Arts portion of PAWS. For the 2009-2010 school year, there were 18 students exempted in Sweetwater County School District Number One.

Due to complications during last year's administration of the Proficiency Assessments for Wyoming Students (PAWS), the Wyoming Department of Education has requested a waiver to use last year's accountability ratings again this year. Therefore, Sweetwater County School District Number One will continue to be rated as not making adequate yearly progress for two consecutive years in language arts and designated as "in need of Improvement". School designations also remain unchanged therefore for the 2009-2010 school year.

DISTRICT LEVEL

To protect individual student confidentiality, results are not reported for 5 or fewer

Public PAWS Results - District Level - Disaggregated

School Year	District Name	Grade	Subgroup	Subject	Number of Students Tested	Participation Rate	Percent Below Basic	Percent Basic	Percent Proficient	Percent Advanced	Percent Basic and Below	Percent Proficient and Advanced
2009-10	Sweetwater #1	3	All Students	Math	390 - 399	99.7%	3.59%	14.87%	46.92%	34.62%	18.46%	81.54%
2009-10	Sweetwater #1	3	Asian/Pacific Islander	Math	6 - 9	100.0%					<= 20%	>= 80%
2009-10	Sweetwater #1	03	Black	Math	1 - 5							
2009-10	Sweetwater #1	03	Hispanic	Math	80 - 89	98.8%	8.43%	24.10%	48.19%	19.28%	32.53%	67.47%
2009-10	Sweetwater #1	03	American Indian/Alaska Native	Math	0							
2009-10	Sweetwater #1	03	White	Math	290 - 299	100.0%	2.39%	12.29%	46.42%	38.91%	14.68%	85.32%
2009-10	Sweetwater #1	03	Female	Math	180 - 189	99.5%	5.35%	16.58%	46.52%	31.55%	21.93%	78.07%
2009-10	Sweetwater #1	03	Male	Math	200 - 209	100.0%	1.97%	13.30%	47.29%	37.44%	15.27%	84.73%
2009-10	Sweetwater #1	03	English Language Learner	Math	10 - 19	100.0%	16.67%	41.67%	25.00%	16.67%	58.33%	41.67%
2009-10	Sweetwater #1	03	Free/Reduced Lunch	Math	160 - 169	100.0%	5.42%	15.66%	50.00%	28.92%	21.08%	78.92%
2009-10	Sweetwater #1	03	Individual Education Plan	Math	50 - 59	100.0%	11.86%	10.17%	50.85%	27.12%	22.03%	77.97%
2009-10	Sweetwater #1	03	All Students	Reading	380 - 389	99.5%	8.48%	33.68%	45.24%	12.60%	42.16%	57.84%
2009-10	Sweetwater #1	03	Asian/Pacific Islander	Reading	6 - 9	100.0%					<= 20%	>= 80%
2009-10	Sweetwater #1	03	Black	Reading	1 - 5							
2009-10	Sweetwater #1	03	Hispanic	Reading	80 - 89	97.6%	13.41%	47.56%	37.80%	1.22%	60.98%	39.02%
2009-10	Sweetwater #1	03	American Indian/Alaska Native	Reading	0							
2009-10	Sweetwater #1	03	White	Reading	290 - 299	100.0%	7.17%	30.72%	46.42%	15.70%	37.88%	62.12%
2009-10	Sweetwater #1	03	Female	Reading	180 - 189	99.5%	8.02%	31.02%	47.06%	13.90%	39.04%	60.96%
2009-10	Sweetwater #1	03	Male	Reading	200 - 209	99.5%	8.91%	36.14%	43.56%	11.39%	45.05%	54.95%
2009-10	Sweetwater #1	03	English Language Learner	Reading	10 - 19	100.0%	25.00%	58.33%	16.67%	0.00%	83.33%	16.67%
2009-10	Sweetwater #1	03	Free/Reduced Lunch	Reading	160 - 169	99.4%	11.52%	34.55%	47.27%	6.67%	46.06%	53.94%
2009-10	Sweetwater #1	03	Individual Education Plan	Reading	50 - 59	98.3%	22.41%	37.93%	37.93%	1.72%	60.34%	39.66%
2009-10	Sweetwater #1	03	All Students	Writing	380 - 389	99.5%	1.29%	16.71%	55.53%	26.48%	17.99%	82.01%
2009-10	Sweetwater #1	03	Asian/Pacific Islander	Writing	6 - 9	100.0%					<= 20%	>= 80%
2009-10	Sweetwater #1	03	Black	Writing	1 - 5							
2009-10	Sweetwater #1	03	Hispanic	Writing	80 - 89	97.6%	3.66%	23.17%	59.76%	13.41%	26.83%	73.17%
2009-10	Sweetwater #1	03	American Indian/Alaska Native	Writing	0							

To protect individual student confidentiality, results are not reported for 5 or fewer

Public PAWS Results - District Level - Disaggregated

School Year	District Name	Grade	Subgroup	Subject	Number of Students Tested	Participation Rate	Percent Below Basic	Percent Basic	Percent Proficient	Percent Advanced	Percent Basic and Below	Percent Proficient and Advanced
2009-10	Sweetwater #1	03	White	Writing	290 - 299	100.0%	0.68%	15.02%	54.27%	30.03%	15.70%	84.30%
2009-10	Sweetwater #1	03	Female	Writing	180 - 189	99.5%	1.07%	11.76%	56.15%	31.02%	12.83%	87.17%
2009-10	Sweetwater #1	03	Male	Writing	200 - 209	99.5%	1.49%	21.29%	54.95%	22.28%	22.77%	77.23%
2009-10	Sweetwater #1	03	English Language Learner	Writing	10 - 19	100.0%	8.33%	41.67%	50.00%	0.00%	50.00%	50.00%
2009-10	Sweetwater #1	03	Free/Reduced Lunch	Writing	160 - 169	99.4%	1.82%	24.85%	55.15%	18.18%	26.67%	73.33%
2009-10	Sweetwater #1	03	Individual Education Plan	Writing	50 - 59	98.3%	3.45%	36.21%	46.55%	13.79%	39.66%	60.34%
2009-10	Sweetwater #1	04	All Students	Math	400 - 409	99.8%	7.94%	13.65%	56.08%	22.33%	21.59%	78.41%
2009-10	Sweetwater #1	04	Asian/Pacific Islander	Math	1 - 5							
2009-10	Sweetwater #1	04	Black	Math	1 - 5							
2009-10	Sweetwater #1	04	Hispanic	Math	80 - 89	100.0%	10.84%	13.25%	63.86%	12.05%	24.10%	75.90%
2009-10	Sweetwater #1	04	American Indian/Alaska Native	Math	1 - 5							
2009-10	Sweetwater #1	04	White	Math	310 - 319	99.7%	7.10%	13.55%	54.52%	24.84%	20.65%	79.35%
2009-10	Sweetwater #1	04	Female	Math	200 - 209	99.5%	7.84%	10.78%	62.25%	19.12%	18.63%	81.37%
2009-10	Sweetwater #1	04	Male	Math	190 - 199	100.0%	8.04%	16.58%	49.75%	25.63%	24.62%	75.38%
2009-10	Sweetwater #1	04	English Language Learner	Math	10 - 19	100.0%	31.25%	31.25%	37.50%	0.00%	62.50%	37.50%
2009-10	Sweetwater #1	04	Free/Reduced Lunch	Math	190 - 199	100.0%	11.92%	17.62%	53.37%	17.10%	29.53%	70.47%
2009-10	Sweetwater #1	04	Individual Education Plan	Math	50 - 59	100.0%	28.81%	25.42%	35.59%	10.17%	54.24%	45.76%
2009-10	Sweetwater #1	04	All Students	Reading	400 - 409	99.8%	3.97%	21.59%	56.58%	17.87%	25.56%	74.44%
2009-10	Sweetwater #1	04	Asian/Pacific Islander	Reading	1 - 5							
2009-10	Sweetwater #1	04	Black	Reading	1 - 5							
2009-10	Sweetwater #1	04	Hispanic	Reading	80 - 89	100.0%	4.82%	31.33%	51.81%	12.05%	36.14%	63.86%
2009-10	Sweetwater #1	04	American Indian/Alaska Native	Reading	1 - 5							
2009-10	Sweetwater #1	04	White	Reading	310 - 319	99.7%	3.55%	19.35%	57.74%	19.35%	22.90%	77.10%
2009-10	Sweetwater #1	04	Female	Reading	200 - 209	99.5%	4.90%	23.04%	52.94%	19.12%	27.94%	72.06%
2009-10	Sweetwater #1	04	Male	Reading	190 - 199	100.0%	3.02%	20.10%	60.30%	16.58%	23.12%	76.88%
2009-10	Sweetwater #1	04	English Language Learner	Reading	10 - 19	100.0%	18.75%	68.75%	12.50%	0.00%	87.50%	12.50%
2009-10	Sweetwater #1	04	Free/Reduced Lunch	Reading	190 - 199	100.0%	5.18%	29.02%	52.85%	12.95%	34.20%	65.80%

To protect individual student confidentiality, results are not reported for 5 or fewer

Public PAWS Results - District Level - Disaggregated

School Year	District Name	Grade	Subgroup	Subject	Number of Students Tested	Participation Rate	Percent Below Basic	Percent Basic	Percent Proficient	Percent Advanced	Percent Basic and Below	Percent Proficient and Advanced
2009-10	Sweetwater #1	04	Individual Education Plan	Reading	50 - 59	100.0%	15.25%	37.29%	45.76%	1.69%	52.54%	47.46%
2009-10	Sweetwater #1	04	All Students	Writing	400 - 409	99.8%	1.74%	16.13%	61.29%	20.84%	17.87%	82.13%
2009-10	Sweetwater #1	04	Asian/Pacific Islander	Writing	1 - 5							
2009-10	Sweetwater #1	04	Black	Writing	1 - 5							
2009-10	Sweetwater #1	04	Hispanic	Writing	80 - 89	100.0%	7.23%	16.87%	61.45%	14.46%	24.10%	75.90%
2009-10	Sweetwater #1	04	American Indian/Alaska Native	Writing	1 - 5							
2009-10	Sweetwater #1	04	White	Writing	310 - 319	99.7%	0.32%	16.13%	60.97%	22.58%	16.45%	83.55%
2009-10	Sweetwater #1	04	Female	Writing	200 - 209	99.5%	0.98%	16.18%	54.41%	28.43%	17.16%	82.84%
2009-10	Sweetwater #1	04	Male	Writing	190 - 199	100.0%	2.51%	16.08%	68.34%	13.07%	18.59%	81.41%
2009-10	Sweetwater #1	04	English Language Learner	Writing	10 - 19	100.0%	31.25%	31.25%	37.50%	0.00%	62.50%	37.50%
2009-10	Sweetwater #1	04	Free/Reduced Lunch	Writing	190 - 199	100.0%	3.63%	18.65%	61.66%	16.06%	22.28%	77.72%
2009-10	Sweetwater #1	04	Individual Education Plan	Writing	50 - 59	100.0%	5.08%	40.68%	50.85%	3.39%	45.76%	54.24%
2009-10	Sweetwater #1	04	All Students	Science	400 - 409	99.8%	12.90%	38.71%	41.69%	6.70%	51.61%	48.39%
2009-10	Sweetwater #1	04	Asian/Pacific Islander	Science	1 - 5							
2009-10	Sweetwater #1	04	Black	Science	1 - 5							
2009-10	Sweetwater #1	04	Hispanic	Science	80 - 89	100.0%	15.66%	44.58%	36.14%	3.61%	60.24%	39.76%
2009-10	Sweetwater #1	04	American Indian/Alaska Native	Science	1 - 5							
2009-10	Sweetwater #1	04	White	Science	310 - 319	99.7%	11.94%	37.10%	43.23%	7.74%	49.03%	50.97%
2009-10	Sweetwater #1	04	Female	Science	200 - 209	99.5%	14.71%	41.67%	36.76%	6.86%	56.37%	43.63%
2009-10	Sweetwater #1	04	Male	Science	190 - 199	100.0%	11.06%	35.68%	46.73%	6.53%	46.73%	53.27%
2009-10	Sweetwater #1	04	English Language Learner	Science	10 - 19	100.0%	37.50%	37.50%	18.75%	6.25%	75.00%	25.00%
2009-10	Sweetwater #1	04	Free/Reduced Lunch	Science	190 - 199	100.0%	20.21%	43.01%	32.12%	4.66%	63.21%	36.79%
2009-10	Sweetwater #1	04	Individual Education Plan	Science	50 - 59	100.0%	20.34%	44.07%	33.90%	1.69%	64.41%	35.59%
2009-10	Sweetwater #1	05	All Students	Math	420 - 429	99.8%	12.29%	26.71%	45.39%	15.60%	39.01%	60.99%
2009-10	Sweetwater #1	05	Asian/Pacific Islander	Math	1 - 5							
2009-10	Sweetwater #1	05	Black	Math	6 - 9	100.0%	37.50%	0.00%	62.50%	0.00%	37.50%	62.50%
2009-10	Sweetwater #1	05	Hispanic	Math	80 - 89	98.8%	22.62%	29.76%	42.86%	4.76%	52.38%	47.62%

To protect individual student confidentiality, results are not reported for 5 or fewer

Public PAWS Results - District Level - Disaggregated

School Year	District Name	Grade	Subgroup	Subject	Number of Students Tested	Participation Rate	Percent Below Basic	Percent Basic	Percent Proficient	Percent Advanced	Percent Basic and Below	Percent Proficient and Advanced
2009-10	Sweetwater #1	05	American Indian/Alaska Native	Math	1 - 5							
2009-10	Sweetwater #1	05	White	Math	320 - 329	100.0%	8.95%	26.85%	45.68%	18.52%	35.80%	64.20%
2009-10	Sweetwater #1	05	Female	Math	170 - 179	99.4%	11.49%	27.01%	47.70%	13.79%	38.51%	61.49%
2009-10	Sweetwater #1	05	Male	Math	240 - 249	100.0%	12.85%	26.51%	43.78%	16.87%	39.36%	60.64%
2009-10	Sweetwater #1	05	English Language Learner	Math	10 - 19	100.0%					>= 90%	<= 10%
2009-10	Sweetwater #1	05	Free/Reduced Lunch	Math	150 - 159	100.0%	16.34%	30.72%	44.44%	8.50%	47.06%	52.94%
2009-10	Sweetwater #1	05	Individual Education Plan	Math	60 - 69	100.0%	26.98%	33.33%	36.51%	3.17%	60.32%	39.68%
2009-10	Sweetwater #1	05	All Students	Reading	420 - 429	99.8%	20.19%	34.92%	37.77%	7.13%	55.11%	44.89%
2009-10	Sweetwater #1	05	Asian/Pacific Islander	Reading	1 - 5							
2009-10	Sweetwater #1	05	Black	Reading	6 - 9	100.0%	25.00%	25.00%	50.00%	0.00%	50.00%	50.00%
2009-10	Sweetwater #1	05	Hispanic	Reading	80 - 89	98.8%	26.83%	41.46%	26.83%	4.88%	68.29%	31.71%
2009-10	Sweetwater #1	05	American Indian/Alaska Native	Reading	1 - 5							
2009-10	Sweetwater #1	05	White	Reading	320 - 329	100.0%	18.52%	33.33%	40.43%	7.72%	51.85%	48.15%
2009-10	Sweetwater #1	05	Female	Reading	170 - 179	99.4%	13.95%	32.56%	44.77%	8.72%	46.51%	53.49%
2009-10	Sweetwater #1	05	Male	Reading	240 - 249	100.0%	24.50%	36.55%	32.93%	6.02%	61.04%	38.96%
2009-10	Sweetwater #1	05	English Language Learner	Reading	10 - 19	100.0%					>= 90%	<= 10%
2009-10	Sweetwater #1	05	Free/Reduced Lunch	Reading	150 - 159	100.0%	25.83%	39.74%	30.46%	3.97%	65.56%	34.44%
2009-10	Sweetwater #1	05	Individual Education Plan	Reading	60 - 69	100.0%	50.79%	33.33%	14.29%	1.59%	84.13%	15.87%
2009-10	Sweetwater #1	05	All Students	Writing	420 - 429	99.8%	5.70%	24.23%	65.08%	4.99%	29.93%	70.07%
2009-10	Sweetwater #1	05	Asian/Pacific Islander	Writing	1 - 5							
2009-10	Sweetwater #1	05	Black	Writing	6 - 9	100.0%	0.00%	25.00%	75.00%	0.00%	25.00%	75.00%
2009-10	Sweetwater #1	05	Hispanic	Writing	80 - 89	98.8%	6.10%	32.93%	54.88%	6.10%	39.02%	60.98%
2009-10	Sweetwater #1	05	American Indian/Alaska Native	Writing	1 - 5							
2009-10	Sweetwater #1	05	White	Writing	320 - 329	100.0%	5.86%	21.60%	67.90%	4.63%	27.47%	72.53%
2009-10	Sweetwater #1	05	Female	Writing	170 - 179	99.4%	3.49%	11.05%	76.74%	8.72%	14.53%	85.47%
2009-10	Sweetwater #1	05	Male	Writing	240 - 249	100.0%	7.23%	33.33%	57.03%	2.41%	40.56%	59.44%
2009-10	Sweetwater #1	05	English Language Learner	Writing	10 - 19	100.0%	16.67%	33.33%	50.00%	0.00%	50.00%	50.00%

To protect individual student confidentiality, results are not reported for 5 or fewer

Public PAWS Results - District Level - Disaggregated

School Year	District Name	Grade	Subgroup	Subject	Number of Students Tested	Participation Rate	Percent Below Basic	Percent Basic	Percent Proficient	Percent Advanced	Percent Basic and Below	Percent Proficient and Advanced
2009-10	Sweetwater #1	05	Free/Reduced Lunch	Writing	150 - 159	100.0%	7.95%	31.13%	59.60%	1.32%	39.07%	60.93%
2009-10	Sweetwater #1	05	Individual Education Plan	Writing	60 - 69	100.0%	12.70%	44.44%	42.86%	0.00%	57.14%	42.86%
2009-10	Sweetwater #1	06	All Students	Math	410 - 419	99.3%	12.35%	16.22%	57.38%	14.04%	28.57%	71.43%
2009-10	Sweetwater #1	06	Asian/Pacific Islander	Math	1 - 5							
2009-10	Sweetwater #1	06	Black	Math	6 - 9	100.0%	14.29%	28.57%	57.14%	0.00%	42.86%	57.14%
2009-10	Sweetwater #1	06	Hispanic	Math	70 - 79	100.0%	21.05%	17.11%	56.58%	5.26%	38.16%	61.84%
2009-10	Sweetwater #1	06	American Indian/Alaska Native	Math	6 - 9	100.0%	0.00%	28.57%	71.43%	0.00%	28.57%	71.43%
2009-10	Sweetwater #1	06	White	Math	320 - 329	99.1%	10.59%	15.58%	57.32%	16.51%	26.17%	73.83%
2009-10	Sweetwater #1	06	Female	Math	200 - 209	99.0%	14.29%	15.27%	54.68%	15.76%	29.56%	70.44%
2009-10	Sweetwater #1	06	Male	Math	210 - 219	99.5%	10.48%	17.14%	60.00%	12.38%	27.62%	72.38%
2009-10	Sweetwater #1	06	English Language Learner	Math	10 - 19	100.0%	63.64%	18.18%	18.18%	0.00%	81.82%	18.18%
2009-10	Sweetwater #1	06	Free/Reduced Lunch	Math	150 - 159	100.0%	19.08%	19.74%	55.92%	5.26%	38.82%	61.18%
2009-10	Sweetwater #1	06	Individual Education Plan	Math	60 - 69	100.0%	50.79%	17.46%	28.57%	3.17%	68.25%	31.75%
2009-10	Sweetwater #1	06	All Students	Reading	410 - 419	99.3%	10.92%	25.73%	51.21%	12.14%	36.65%	63.35%
2009-10	Sweetwater #1	06	Asian/Pacific Islander	Reading	1 - 5							
2009-10	Sweetwater #1	06	Black	Reading	6 - 9	100.0%	0.00%	28.57%	71.43%	0.00%	28.57%	71.43%
2009-10	Sweetwater #1	06	Hispanic	Reading	70 - 79	100.0%	17.33%	32.00%	44.00%	6.67%	49.33%	50.67%
2009-10	Sweetwater #1	06	American Indian/Alaska Native	Reading	6 - 9	100.0%	28.57%	42.86%	28.57%	0.00%	71.43%	28.57%
2009-10	Sweetwater #1	06	White	Reading	320 - 329	99.1%	9.35%	23.99%	52.96%	13.71%	33.33%	66.67%
2009-10	Sweetwater #1	06	Female	Reading	200 - 209	99.0%	8.42%	24.75%	50.99%	15.84%	33.17%	66.83%
2009-10	Sweetwater #1	06	Male	Reading	210 - 219	99.5%	13.33%	26.67%	51.43%	8.57%	40.00%	60.00%
2009-10	Sweetwater #1	06	English Language Learner	Reading	10 - 19	100.0%					>= 90%	<= 10%
2009-10	Sweetwater #1	06	Free/Reduced Lunch	Reading	150 - 159	100.0%	18.54%	31.79%	43.71%	5.96%	50.33%	49.67%
2009-10	Sweetwater #1	06	Individual Education Plan	Reading	60 - 69	100.0%	42.86%	34.92%	20.63%	1.59%	77.78%	22.22%
2009-10	Sweetwater #1	06	All Students	Writing	410 - 419	99.3%	4.37%	43.20%	40.29%	12.14%	47.57%	52.43%
2009-10	Sweetwater #1	06	Asian/Pacific Islander	Writing	1 - 5							
2009-10	Sweetwater #1	06	Black	Writing	6 - 9	100.0%	0.00%	42.86%	57.14%	0.00%	42.86%	57.14%

To protect individual student confidentiality, results are not reported for 5 or fewer

Public PAWS Results - District Level - Disaggregated

School Year	District Name	Grade	Subgroup	Subject	Number of Students Tested	Participation Rate	Percent Below Basic	Percent Basic	Percent Proficient	Percent Advanced	Percent Basic and Below	Percent Proficient and Advanced
2009-10	Sweetwater #1	06	Hispanic	Writing	70 - 79	100.0%	6.67%	44.00%	37.33%	12.00%	50.67%	49.33%
2009-10	Sweetwater #1	06	American Indian/Alaska Native	Writing	6 - 9	100.0%	0.00%	71.43%	28.57%	0.00%	71.43%	28.57%
2009-10	Sweetwater #1	06	White	Writing	320 - 329	99.1%	4.05%	42.68%	40.50%	12.77%	46.73%	53.27%
2009-10	Sweetwater #1	06	Female	Writing	200 - 209	99.0%	3.47%	31.19%	46.04%	19.31%	34.65%	65.35%
2009-10	Sweetwater #1	06	Male	Writing	210 - 219	99.5%	5.24%	54.76%	34.76%	5.24%	60.00%	40.00%
2009-10	Sweetwater #1	06	English Language Learner	Writing	10 - 19	100.0%					>= 90%	<= 10%
2009-10	Sweetwater #1	06	Free/Reduced Lunch	Writing	150 - 159	100.0%	8.61%	48.34%	34.44%	8.61%	56.95%	43.05%
2009-10	Sweetwater #1	06	Individual Education Plan	Writing	60 - 69	100.0%	15.87%	66.67%	12.70%	4.76%	82.54%	17.46%
2009-10	Sweetwater #1	07	All Students	Math	380 - 389	99.7%	23.64%	27.27%	36.88%	12.21%	50.91%	49.09%
2009-10	Sweetwater #1	07	Asian/Pacific Islander	Math	6 - 9	100.0%					<= 20%	>= 80%
2009-10	Sweetwater #1	07	Black	Math	10 - 19	100.0%	30.00%	30.00%	40.00%	0.00%	60.00%	40.00%
2009-10	Sweetwater #1	07	Hispanic	Math	70 - 79	100.0%	41.43%	25.71%	27.14%	5.71%	67.14%	32.86%
2009-10	Sweetwater #1	07	American Indian/Alaska Native	Math	6 - 9	100.0%	37.50%	25.00%	37.50%	0.00%	62.50%	37.50%
2009-10	Sweetwater #1	07	White	Math	290 - 299	99.7%	19.24%	28.18%	39.18%	13.40%	47.42%	52.58%
2009-10	Sweetwater #1	07	Female	Math	180 - 189	100.0%	21.74%	31.52%	33.15%	13.59%	53.26%	46.74%
2009-10	Sweetwater #1	07	Male	Math	200 - 209	99.5%	25.37%	23.38%	40.30%	10.95%	48.76%	51.24%
2009-10	Sweetwater #1	07	English Language Learner	Math	10 - 19	100.0%	52.63%	31.58%	15.79%	0.00%	84.21%	15.79%
2009-10	Sweetwater #1	07	Free/Reduced Lunch	Math	150 - 159	100.0%	39.33%	23.33%	31.33%	6.00%	62.67%	37.33%
2009-10	Sweetwater #1	07	Individual Education Plan	Math	40 - 49	98.0%	66.67%	20.83%	12.50%	0.00%	87.50%	12.50%
2009-10	Sweetwater #1	07	All Students	Reading	380 - 389	99.7%	16.10%	45.45%	36.36%	2.08%	61.56%	38.44%
2009-10	Sweetwater #1	07	Asian/Pacific Islander	Reading	6 - 9	100.0%					<= 20%	>= 80%
2009-10	Sweetwater #1	07	Black	Reading	10 - 19	100.0%	10.00%	70.00%	20.00%	0.00%	80.00%	20.00%
2009-10	Sweetwater #1	07	Hispanic	Reading	70 - 79	100.0%	30.00%	44.29%	25.71%	0.00%	74.29%	25.71%
2009-10	Sweetwater #1	07	American Indian/Alaska Native	Reading	6 - 9	100.0%	62.50%	12.50%	25.00%	0.00%	75.00%	25.00%
2009-10	Sweetwater #1	07	White	Reading	290 - 299	99.7%	11.68%	46.74%	39.18%	2.41%	58.42%	41.58%
2009-10	Sweetwater #1	07	Female	Reading	180 - 189	100.0%	14.13%	45.11%	36.96%	3.80%	59.24%	40.76%
2009-10	Sweetwater #1	07	Male	Reading	200 - 209	99.5%	17.91%	45.77%	35.82%	0.50%	63.68%	36.32%

To protect individual student confidentiality, results are not reported for 5 or fewer

Public PAWS Results - District Level - Disaggregated

School Year	District Name	Grade	Subgroup	Subject	Number of Students Tested	Participation Rate	Percent Below Basic	Percent Basic	Percent Proficient	Percent Advanced	Percent Basic and Below	Percent Proficient and Advanced
2009-10	Sweetwater #1	07	English Language Learner	Reading	10 - 19	100.0%	63.16%	26.32%	10.53%	0.00%	89.47%	10.53%
2009-10	Sweetwater #1	07	Free/Reduced Lunch	Reading	150 - 159	100.0%	28.00%	44.67%	26.00%	1.33%	72.67%	27.33%
2009-10	Sweetwater #1	07	Individual Education Plan	Reading	40 - 49	98.0%					>= 95%	<= 5%
2009-10	Sweetwater #1	07	All Students	Writing	380 - 389	99.7%	2.60%	31.17%	47.01%	19.22%	33.77%	66.23%
2009-10	Sweetwater #1	07	Asian/Pacific Islander	Writing	6 - 9	100.0%					<= 20%	>= 80%
2009-10	Sweetwater #1	07	Black	Writing	10 - 19	100.0%	0.00%	20.00%	70.00%	10.00%	20.00%	80.00%
2009-10	Sweetwater #1	07	Hispanic	Writing	70 - 79	100.0%	5.71%	37.14%	47.14%	10.00%	42.86%	57.14%
2009-10	Sweetwater #1	07	American Indian/Alaska Native	Writing	6 - 9	100.0%	12.50%	25.00%	62.50%	0.00%	37.50%	62.50%
2009-10	Sweetwater #1	07	White	Writing	290 - 299	99.7%	1.72%	30.58%	45.70%	21.99%	32.30%	67.70%
2009-10	Sweetwater #1	07	Female	Writing	180 - 189	100.0%	0.54%	21.20%	51.09%	27.17%	21.74%	78.26%
2009-10	Sweetwater #1	07	Male	Writing	200 - 209	99.5%	4.48%	40.30%	43.28%	11.94%	44.78%	55.22%
2009-10	Sweetwater #1	07	English Language Learner	Writing	10 - 19	100.0%	21.05%	47.37%	31.58%	0.00%	68.42%	31.58%
2009-10	Sweetwater #1	07	Free/Reduced Lunch	Writing	150 - 159	100.0%	2.67%	46.00%	41.33%	10.00%	48.67%	51.33%
2009-10	Sweetwater #1	07	Individual Education Plan	Writing	40 - 49	98.0%	10.42%	66.67%	22.92%	0.00%	77.08%	22.92%
2009-10	Sweetwater #1	08	All Students	Math	340 - 349	99.4%	19.19%	20.93%	46.80%	13.08%	40.12%	59.88%
2009-10	Sweetwater #1	08	Asian/Pacific Islander	Math	1 - 5							
2009-10	Sweetwater #1	08	Black	Math	10 - 19	100.0%	18.18%	36.36%	45.45%	0.00%	54.55%	45.45%
2009-10	Sweetwater #1	08	Hispanic	Math	60 - 69	100.0%	19.40%	28.36%	46.27%	5.97%	47.76%	52.24%
2009-10	Sweetwater #1	08	American Indian/Alaska Native	Math	1 - 5							
2009-10	Sweetwater #1	08	White	Math	250 - 259	99.2%	18.99%	18.22%	47.29%	15.50%	37.21%	62.79%
2009-10	Sweetwater #1	08	Female	Math	160 - 169	98.8%	20.61%	21.21%	44.85%	13.33%	41.82%	58.18%
2009-10	Sweetwater #1	08	Male	Math	170 - 179	100.0%	17.88%	20.67%	48.60%	12.85%	38.55%	61.45%
2009-10	Sweetwater #1	08	English Language Learner	Math	10 - 19	100.0%	40.00%	40.00%	20.00%	0.00%	80.00%	20.00%
2009-10	Sweetwater #1	08	Free/Reduced Lunch	Math	130 - 139	99.3%	26.87%	23.13%	41.79%	8.21%	50.00%	50.00%
2009-10	Sweetwater #1	08	Individual Education Plan	Math	40 - 49	100.0%	65.85%	12.20%	14.63%	7.32%	78.05%	21.95%
2009-10	Sweetwater #1	08	All Students	Reading	340 - 349	99.4%	11.05%	29.07%	47.97%	11.92%	40.12%	59.88%
2009-10	Sweetwater #1	08	Asian/Pacific Islander	Reading	1 - 5							

To protect individual student confidentiality, results are not reported for 5 or fewer

Public PAWS Results - District Level - Disaggregated

School Year	District Name	Grade	Subgroup	Subject	Number of Students Tested	Participation Rate	Percent Below Basic	Percent Basic	Percent Proficient	Percent Advanced	Percent Basic and Below	Percent Proficient and Advanced
2009-10	Sweetwater #1	08	Black	Reading	10 - 19	100.0%	9.09%	27.27%	63.64%	0.00%	36.36%	63.64%
2009-10	Sweetwater #1	08	Hispanic	Reading	60 - 69	100.0%	13.43%	38.81%	41.79%	5.97%	52.24%	47.76%
2009-10	Sweetwater #1	08	American Indian/Alaska Native	Reading	1 - 5							
2009-10	Sweetwater #1	08	White	Reading	250 - 259	99.2%	10.47%	26.36%	49.22%	13.95%	36.82%	63.18%
2009-10	Sweetwater #1	08	Female	Reading	160 - 169	98.8%	10.91%	26.67%	46.06%	16.36%	37.58%	62.42%
2009-10	Sweetwater #1	08	Male	Reading	170 - 179	100.0%	11.17%	31.28%	49.72%	7.82%	42.46%	57.54%
2009-10	Sweetwater #1	08	English Language Learner	Reading	10 - 19	100.0%	40.00%	30.00%	30.00%	0.00%	70.00%	30.00%
2009-10	Sweetwater #1	08	Free/Reduced Lunch	Reading	130 - 139	99.3%	16.42%	30.60%	47.01%	5.97%	47.01%	52.99%
2009-10	Sweetwater #1	08	Individual Education Plan	Reading	40 - 49	100.0%	39.02%	41.46%	19.51%	0.00%	80.49%	19.51%
2009-10	Sweetwater #1	08	All Students	Writing	340 - 349	98.8%	1.46%	13.45%	68.13%	16.96%	14.91%	85.09%
2009-10	Sweetwater #1	08	Asian/Pacific Islander	Writing	1 - 5							
2009-10	Sweetwater #1	08	Black	Writing	10 - 19	100.0%					<= 10%	>= 90%
2009-10	Sweetwater #1	08	Hispanic	Writing	60 - 69	98.5%	3.03%	15.15%	66.67%	15.15%	18.18%	81.82%
2009-10	Sweetwater #1	08	American Indian/Alaska Native	Writing	1 - 5							
2009-10	Sweetwater #1	08	White	Writing	250 - 259	98.8%	1.17%	13.23%	68.48%	17.12%	14.40%	85.60%
2009-10	Sweetwater #1	08	Female	Writing	160 - 169	97.6%	0.61%	6.13%	68.71%	24.54%	6.75%	93.25%
2009-10	Sweetwater #1	08	Male	Writing	170 - 179	100.0%	2.23%	20.11%	67.60%	10.06%	22.35%	77.65%
2009-10	Sweetwater #1	08	English Language Learner	Writing	10 - 19	100.0%	0.00%	20.00%	80.00%	0.00%	20.00%	80.00%
2009-10	Sweetwater #1	08	Free/Reduced Lunch	Writing	130 - 139	98.5%	1.50%	15.04%	68.42%	15.04%	16.54%	83.46%
2009-10	Sweetwater #1	08	Individual Education Plan	Writing	40 - 49	100.0%	12.20%	41.46%	46.34%	0.00%	53.66%	46.34%
2009-10	Sweetwater #1	08	All Students	Science	340 - 349	99.4%	28.20%	44.19%	25.58%	2.03%	72.38%	27.62%
2009-10	Sweetwater #1	08	Asian/Pacific Islander	Science	1 - 5							
2009-10	Sweetwater #1	08	Black	Science	10 - 19	100.0%					>= 90%	<= 10%
2009-10	Sweetwater #1	08	Hispanic	Science	60 - 69	100.0%	35.82%	41.79%	22.39%	0.00%	77.61%	22.39%
2009-10	Sweetwater #1	08	American Indian/Alaska Native	Science	1 - 5							
2009-10	Sweetwater #1	08	White	Science	250 - 259	99.2%	25.19%	44.57%	27.91%	2.33%	69.77%	30.23%
2009-10	Sweetwater #1	08	Female	Science	160 - 169	98.8%	27.27%	43.03%	26.67%	3.03%	70.30%	29.70%

To protect individual student confidentiality, results are not reported for 5 or fewer

Public PAWS Results - District Level - Disaggregated

School Year	District Name	Grade	Subgroup	Subject	Number of Students Tested	Participation Rate	Percent Below Basic	Percent Basic	Percent Proficient	Percent Advanced	Percent Basic and Below	Percent Proficient and Advanced
2009-10	Sweetwater #1	08	Male	Science	170 - 179	100.0%	29.05%	45.25%	24.58%	1.12%	74.30%	25.70%
2009-10	Sweetwater #1	08	English Language Learner	Science	10 - 19	100.0%					>= 90%	<= 10%
2009-10	Sweetwater #1	08	Free/Reduced Lunch	Science	130 - 139	99.3%	36.57%	42.54%	18.66%	2.24%	79.10%	20.90%
2009-10	Sweetwater #1	08	Individual Education Plan	Science	40 - 49	100.0%	56.10%	31.71%	9.76%	2.44%	87.80%	12.20%
2009-10	Sweetwater #1	11	All Students	Math	250 - 259	97.7%	11.37%	29.02%	43.53%	16.08%	40.39%	59.61%
2009-10	Sweetwater #1	11	Asian/Pacific Islander	Math	6 - 9	100.0%					<= 20%	>= 80%
2009-10	Sweetwater #1	11	Black	Math	6 - 9	100.0%					>= 80%	<= 20%
2009-10	Sweetwater #1	11	Hispanic	Math	30 - 39	100.0%	18.18%	27.27%	48.48%	6.06%	45.45%	54.55%
2009-10	Sweetwater #1	11	American Indian/Alaska Native	Math	1 - 5							
2009-10	Sweetwater #1	11	White	Math	200 - 209	97.1%	9.90%	29.21%	44.55%	16.34%	39.11%	60.89%
2009-10	Sweetwater #1	11	Female	Math	110 - 119	97.5%	11.30%	30.43%	46.96%	11.30%	41.74%	58.26%
2009-10	Sweetwater #1	11	Male	Math	140 - 149	97.9%	11.43%	27.86%	40.71%	20.00%	39.29%	60.71%
2009-10	Sweetwater #1	11	English Language Learner	Math	6 - 9	100.0%					>= 80%	<= 20%
2009-10	Sweetwater #1	11	Free/Reduced Lunch	Math	60 - 69	98.4%	16.13%	32.26%	40.32%	11.29%	48.39%	51.61%
2009-10	Sweetwater #1	11	Individual Education Plan	Math	20 - 29	93.5%	41.38%	48.28%	6.90%	3.45%	89.66%	10.34%
2009-10	Sweetwater #1	11	All Students	Reading	250 - 259	97.7%	15.29%	22.35%	50.20%	12.16%	37.65%	62.35%
2009-10	Sweetwater #1	11	Asian/Pacific Islander	Reading	6 - 9	100.0%	14.29%	14.29%	57.14%	14.29%	28.57%	71.43%
2009-10	Sweetwater #1	11	Black	Reading	6 - 9	100.0%	25.00%	25.00%	50.00%	0.00%	50.00%	50.00%
2009-10	Sweetwater #1	11	Hispanic	Reading	30 - 39	100.0%	30.30%	24.24%	36.36%	9.09%	54.55%	45.45%
2009-10	Sweetwater #1	11	American Indian/Alaska Native	Reading	1 - 5							
2009-10	Sweetwater #1	11	White	Reading	200 - 209	97.1%	12.87%	22.28%	52.48%	12.38%	35.15%	64.85%
2009-10	Sweetwater #1	11	Female	Reading	110 - 119	97.5%	13.91%	21.74%	53.91%	10.43%	35.65%	64.35%
2009-10	Sweetwater #1	11	Male	Reading	140 - 149	97.9%	16.43%	22.86%	47.14%	13.57%	39.29%	60.71%
2009-10	Sweetwater #1	11	English Language Learner	Reading	6 - 9	100.0%					>= 80%	<= 20%
2009-10	Sweetwater #1	11	Free/Reduced Lunch	Reading	60 - 69	98.4%	22.58%	24.19%	45.16%	8.06%	46.77%	53.23%
2009-10	Sweetwater #1	11	Individual Education Plan	Reading	20 - 29	93.5%	48.28%	27.59%	20.69%	3.45%	75.86%	24.14%
2009-10	Sweetwater #1	11	All Students	Writing	250 - 259	97.7%	0.78%	13.33%	61.18%	24.71%	14.12%	85.88%

To protect individual student confidentiality, results are not reported for 5 or fewer

Public PAWS Results - District Level - Disaggregated

School Year	District Name	Grade	Subgroup	Subject	Number of Students Tested	Participation Rate	Percent Below Basic	Percent Basic	Percent Proficient	Percent Advanced	Percent Basic and Below	Percent Proficient and Advanced
2009-10	Sweetwater #1	11	Asian/Pacific Islander	Writing	6 - 9	100.0%					<= 20%	>= 80%
2009-10	Sweetwater #1	11	Black	Writing	6 - 9	100.0%	0.00%	25.00%	62.50%	12.50%	25.00%	75.00%
2009-10	Sweetwater #1	11	Hispanic	Writing	30 - 39	100.0%	3.03%	18.18%	66.67%	12.12%	21.21%	78.79%
2009-10	Sweetwater #1	11	American Indian/Alaska Native	Writing	1 - 5							
2009-10	Sweetwater #1	11	White	Writing	200 - 209	97.1%	0.50%	12.38%	60.89%	26.24%	12.87%	87.13%
2009-10	Sweetwater #1	11	Female	Writing	110 - 119	97.5%	0.00%	13.04%	58.26%	28.70%	13.04%	86.96%
2009-10	Sweetwater #1	11	Male	Writing	140 - 149	97.9%	1.43%	13.57%	63.57%	21.43%	15.00%	85.00%
2009-10	Sweetwater #1	11	English Language Learner	Writing	6 - 9	100.0%					>= 80%	<= 20%
2009-10	Sweetwater #1	11	Free/Reduced Lunch	Writing	60 - 69	98.4%	1.61%	17.74%	64.52%	16.13%	19.35%	80.65%
2009-10	Sweetwater #1	11	Individual Education Plan	Writing	20 - 29	93.5%	3.45%	51.72%	44.83%	0.00%	55.17%	44.83%
2009-10	Sweetwater #1	11	All Students	Science	250 - 259	97.7%	18.43%	38.04%	31.76%	11.76%	56.47%	43.53%
2009-10	Sweetwater #1	11	Asian/Pacific Islander	Science	6 - 9	100.0%	0.00%	42.86%	28.57%	28.57%	42.86%	57.14%
2009-10	Sweetwater #1	11	Black	Science	6 - 9	100.0%					>= 80%	<= 20%
2009-10	Sweetwater #1	11	Hispanic	Science	30 - 39	100.0%	33.33%	39.39%	24.24%	3.03%	72.73%	27.27%
2009-10	Sweetwater #1	11	American Indian/Alaska Native	Science	1 - 5							
2009-10	Sweetwater #1	11	White	Science	200 - 209	97.1%	15.84%	38.12%	33.66%	12.38%	53.96%	46.04%
2009-10	Sweetwater #1	11	Female	Science	110 - 119	97.5%	20.00%	40.00%	31.30%	8.70%	60.00%	40.00%
2009-10	Sweetwater #1	11	Male	Science	140 - 149	97.9%	17.14%	36.43%	32.14%	14.29%	53.57%	46.43%
2009-10	Sweetwater #1	11	English Language Learner	Science	6 - 9	100.0%					>= 80%	<= 20%
2009-10	Sweetwater #1	11	Free/Reduced Lunch	Science	60 - 69	98.4%	25.81%	43.55%	24.19%	6.45%	69.35%	30.65%
2009-10	Sweetwater #1	11	Individual Education Plan	Science	20 - 29	93.5%					>= 95%	<= 5%

SCHOOL LEVEL

Public PAWS Results - School Level - Disaggregated

School Year	District Name	School Name	Grade	Subgroup	Subject	Number of Students Tested	Participation Rate	Percent Below Basic	Percent Basic	Percent Proficient	Percent Advanced	Percent Basic and Blow	Percent Proficient and Advanced
2009-10	Sweetwater #1	Desert Elementary	03	All Students	Math	6 - 9	100.0%	11.11%	44.44%	44.44%	0.00%	55.56%	44.44%
2009-10	Sweetwater #1	Desert Elementary	03	Asian/Pacific Islander	Math	0							
2009-10	Sweetwater #1	Desert Elementary	03	Black	Math	0							
2009-10	Sweetwater #1	Desert Elementary	03	Hispanic	Math	1 - 5							
2009-10	Sweetwater #1	Desert Elementary	03	American Indian/Alaska Native	Math	0							
2009-10	Sweetwater #1	Desert Elementary	03	White	Math	6 - 9	100.0%						
2009-10	Sweetwater #1	Desert Elementary	03	Female	Math	1 - 5							
2009-10	Sweetwater #1	Desert Elementary	03	Male	Math	6 - 9	100.0%						
2009-10	Sweetwater #1	Desert Elementary	03	English Language Learner	Math	1 - 5							
2009-10	Sweetwater #1	Desert Elementary	03	Free/Reduced Lunch	Math	1 - 5							
2009-10	Sweetwater #1	Desert Elementary	03	Individual Education Plan	Math	0							
2009-10	Sweetwater #1	Desert Elementary	03	All Students	Reading	6 - 9	100.0%	22.22%	55.56%	11.11%	11.11%	77.78%	22.22%
2009-10	Sweetwater #1	Desert Elementary	03	Asian/Pacific Islander	Reading	0							
2009-10	Sweetwater #1	Desert Elementary	03	Black	Reading	0							
2009-10	Sweetwater #1	Desert Elementary	03	Hispanic	Reading	1 - 5							
2009-10	Sweetwater #1	Desert Elementary	03	American Indian/Alaska Native	Reading	0							
2009-10	Sweetwater #1	Desert Elementary	03	White	Reading	6 - 9	100.0%						
2009-10	Sweetwater #1	Desert Elementary	03	Female	Reading	1 - 5							
2009-10	Sweetwater #1	Desert Elementary	03	Male	Reading	6 - 9	100.0%						
2009-10	Sweetwater #1	Desert Elementary	03	English Language Learner	Reading	1 - 5							
2009-10	Sweetwater #1	Desert Elementary	03	Free/Reduced Lunch	Reading	1 - 5							
2009-10	Sweetwater #1	Desert Elementary	03	Individual Education Plan	Reading	0							
2009-10	Sweetwater #1	Desert Elementary	03	All Students	Writing	6 - 9	100.0%	0.00%	22.22%	77.78%	0.00%	22.22%	77.78%
2009-10	Sweetwater #1	Desert Elementary	03	Asian/Pacific Islander	Writing	0							
2009-10	Sweetwater #1	Desert Elementary	03	Black	Writing	0							
2009-10	Sweetwater #1	Desert Elementary	03	Hispanic	Writing	1 - 5							
2009-10	Sweetwater #1	Desert Elementary	03	American Indian/Alaska Native	Writing	0							

Public PAWS Results - School Level - Disaggregated

School Year	District Name	School Name	Grade	Subgroup	Subject	Number of Students Tested	Participation Rate	Percent Below Basic	Percent Basic	Percent Proficient	Percent Advanced	Percent Basic and Blow	Percent Proficient and Advanced
2009-10	Sweetwater #1	Desert Elementary	03	White	Writing	6 - 9	100.0%						
2009-10	Sweetwater #1	Desert Elementary	03	Female	Writing	1 - 5							
2009-10	Sweetwater #1	Desert Elementary	03	Male	Writing	6 - 9	100.0%						
2009-10	Sweetwater #1	Desert Elementary	03	English Language Learner	Writing	1 - 5							
2009-10	Sweetwater #1	Desert Elementary	03	Free/Reduced Lunch	Writing	1 - 5							
2009-10	Sweetwater #1	Desert Elementary	03	Individual Education Plan	Writing	0							
2009-10	Sweetwater #1	Desert Elementary	04	All Students	Math	10 - 19	100.0%	8.33%	41.67%	41.67%	8.33%	50.00%	50.00%
2009-10	Sweetwater #1	Desert Elementary	04	Asian/Pacific Islander	Math	1 - 5							
2009-10	Sweetwater #1	Desert Elementary	04	Black	Math	0							
2009-10	Sweetwater #1	Desert Elementary	04	Hispanic	Math	1 - 5							
2009-10	Sweetwater #1	Desert Elementary	04	American Indian/Alaska Native	Math	0							
2009-10	Sweetwater #1	Desert Elementary	04	White	Math	6 - 9	100.0%						
2009-10	Sweetwater #1	Desert Elementary	04	Female	Math	6 - 9	100.0%						
2009-10	Sweetwater #1	Desert Elementary	04	Male	Math	1 - 5							
2009-10	Sweetwater #1	Desert Elementary	04	English Language Learner	Math	1 - 5							
2009-10	Sweetwater #1	Desert Elementary	04	Free/Reduced Lunch	Math	10 - 19	100.0%						
2009-10	Sweetwater #1	Desert Elementary	04	Individual Education Plan	Math	1 - 5							
2009-10	Sweetwater #1	Desert Elementary	04	All Students	Reading	10 - 19	100.0%	16.67%	25.00%	41.67%	16.67%	41.67%	58.33%
2009-10	Sweetwater #1	Desert Elementary	04	Asian/Pacific Islander	Reading	1 - 5							
2009-10	Sweetwater #1	Desert Elementary	04	Black	Reading	0							
2009-10	Sweetwater #1	Desert Elementary	04	Hispanic	Reading	1 - 5							
2009-10	Sweetwater #1	Desert Elementary	04	American Indian/Alaska Native	Reading	0							
2009-10	Sweetwater #1	Desert Elementary	04	White	Reading	6 - 9	100.0%						
2009-10	Sweetwater #1	Desert Elementary	04	Female	Reading	6 - 9	100.0%						
2009-10	Sweetwater #1	Desert Elementary	04	Male	Reading	1 - 5							
2009-10	Sweetwater #1	Desert Elementary	04	English Language Learner	Reading	1 - 5							
2009-10	Sweetwater #1	Desert Elementary	04	Free/Reduced Lunch	Reading	10 - 19	100.0%						
2009-10	Sweetwater #1	Desert Elementary	04	Individual Education Plan	Reading	1 - 5							

Public PAWS Results - School Level - Disaggregated

School Year	District Name	School Name	Grade	Subgroup	Subject	Number of Students Tested	Participation Rate	Percent Below Basic	Percent Basic	Percent Proficient	Percent Advanced	Percent Basic and Blow	Percent Proficient and Advanced
2009-10	Sweetwater #1	Desert Elementary	04	All Students	Writing	10 - 19	100.0%	8.33%	25.00%	50.00%	16.67%	33.33%	66.67%
2009-10	Sweetwater #1	Desert Elementary	04	Asian/Pacific Islander	Writing	1 - 5							
2009-10	Sweetwater #1	Desert Elementary	04	Black	Writing	0							
2009-10	Sweetwater #1	Desert Elementary	04	Hispanic	Writing	1 - 5							
2009-10	Sweetwater #1	Desert Elementary	04	American Indian/Alaska Native	Writing	0							
2009-10	Sweetwater #1	Desert Elementary	04	White	Writing	6 - 9	100.0%						
2009-10	Sweetwater #1	Desert Elementary	04	Female	Writing	6 - 9	100.0%						
2009-10	Sweetwater #1	Desert Elementary	04	Male	Writing	1 - 5							
2009-10	Sweetwater #1	Desert Elementary	04	English Language Learner	Writing	1 - 5							
2009-10	Sweetwater #1	Desert Elementary	04	Free/Reduced Lunch	Writing	10 - 19	100.0%						
2009-10	Sweetwater #1	Desert Elementary	04	Individual Education Plan	Writing	1 - 5							
2009-10	Sweetwater #1	Desert Elementary	04	All Students	Science	10 - 19	100.0%	16.67%	50.00%	16.67%	16.67%	66.67%	33.33%
2009-10	Sweetwater #1	Desert Elementary	04	Asian/Pacific Islander	Science	1 - 5							
2009-10	Sweetwater #1	Desert Elementary	04	Black	Science	0							
2009-10	Sweetwater #1	Desert Elementary	04	Hispanic	Science	1 - 5							
2009-10	Sweetwater #1	Desert Elementary	04	American Indian/Alaska Native	Science	0							
2009-10	Sweetwater #1	Desert Elementary	04	White	Science	6 - 9	100.0%						
2009-10	Sweetwater #1	Desert Elementary	04	Female	Science	6 - 9	100.0%						
2009-10	Sweetwater #1	Desert Elementary	04	Male	Science	1 - 5							
2009-10	Sweetwater #1	Desert Elementary	04	English Language Learner	Science	1 - 5							
2009-10	Sweetwater #1	Desert Elementary	04	Free/Reduced Lunch	Science	10 - 19	100.0%						
2009-10	Sweetwater #1	Desert Elementary	04	Individual Education Plan	Science	1 - 5							
2009-10	Sweetwater #1	Desert Elementary	05	All Students	Math	10 - 19	100.0%	15.38%	38.46%	46.15%	0.00%	53.85%	46.15%
2009-10	Sweetwater #1	Desert Elementary	05	Asian/Pacific Islander	Math	0							
2009-10	Sweetwater #1	Desert Elementary	05	Black	Math	0							
2009-10	Sweetwater #1	Desert Elementary	05	Hispanic	Math	1 - 5							
2009-10	Sweetwater #1	Desert Elementary	05	American Indian/Alaska Native	Math	0							

Public PAWS Results - School Level - Disaggregated

School Year	District Name	School Name	Grade	Subgroup	Subject	Number of Students Tested	Participation Rate	Percent Below Basic	Percent Basic	Percent Proficient	Percent Advanced	Percent Basic and Blow	Percent Proficient and Advanced
2009-10	Sweetwater #1	Desert Elementary	05	White	Math	10 - 19	100.0%						
2009-10	Sweetwater #1	Desert Elementary	05	Female	Math	1 - 5							
2009-10	Sweetwater #1	Desert Elementary	05	Male	Math	6 - 9	100.0%						
2009-10	Sweetwater #1	Desert Elementary	05	English Language Learner	Math	1 - 5							
2009-10	Sweetwater #1	Desert Elementary	05	Free/Reduced Lunch	Math	1 - 5							
2009-10	Sweetwater #1	Desert Elementary	05	Individual Education Plan	Math	1 - 5							
2009-10	Sweetwater #1	Desert Elementary	05	All Students	Reading	10 - 19	100.0%	7.69%	30.77%	61.54%	0.00%	38.46%	61.54%
2009-10	Sweetwater #1	Desert Elementary	05	Asian/Pacific Islander	Reading	0							
2009-10	Sweetwater #1	Desert Elementary	05	Black	Reading	0							
2009-10	Sweetwater #1	Desert Elementary	05	Hispanic	Reading	1 - 5							
2009-10	Sweetwater #1	Desert Elementary	05	American Indian/Alaska Native	Reading	0							
2009-10	Sweetwater #1	Desert Elementary	05	White	Reading	10 - 19	100.0%						
2009-10	Sweetwater #1	Desert Elementary	05	Female	Reading	1 - 5							
2009-10	Sweetwater #1	Desert Elementary	05	Male	Reading	6 - 9	100.0%						
2009-10	Sweetwater #1	Desert Elementary	05	English Language Learner	Reading	1 - 5							
2009-10	Sweetwater #1	Desert Elementary	05	Free/Reduced Lunch	Reading	1 - 5							
2009-10	Sweetwater #1	Desert Elementary	05	Individual Education Plan	Reading	1 - 5							
2009-10	Sweetwater #1	Desert Elementary	05	All Students	Writing	10 - 19	100.0%	0.00%	30.77%	69.23%	0.00%	30.77%	69.23%
2009-10	Sweetwater #1	Desert Elementary	05	Asian/Pacific Islander	Writing	0							
2009-10	Sweetwater #1	Desert Elementary	05	Black	Writing	0							
2009-10	Sweetwater #1	Desert Elementary	05	Hispanic	Writing	1 - 5							
2009-10	Sweetwater #1	Desert Elementary	05	American Indian/Alaska Native	Writing	0							
2009-10	Sweetwater #1	Desert Elementary	05	White	Writing	10 - 19	100.0%						
2009-10	Sweetwater #1	Desert Elementary	05	Female	Writing	1 - 5							
2009-10	Sweetwater #1	Desert Elementary	05	Male	Writing	6 - 9	100.0%						
2009-10	Sweetwater #1	Desert Elementary	05	English Language Learner	Writing	1 - 5							
2009-10	Sweetwater #1	Desert Elementary	05	Free/Reduced Lunch	Writing	1 - 5							
2009-10	Sweetwater #1	Desert Elementary	05	Individual Education Plan	Writing	1 - 5							

Public PAWS Results - School Level - Disaggregated

School Year	District Name	School Name	Grade	Subgroup	Subject	Number of Students Tested	Participation Rate	Percent Below Basic	Percent Basic	Percent Proficient	Percent Advanced	Percent Basic and Blow	Percent Proficient and Advanced
2009-10	Sweetwater #1	Desert Elementary	06	All Students	Math	1 - 5							
2009-10	Sweetwater #1	Desert Elementary	06	Asian/Pacific Islander	Math	0							
2009-10	Sweetwater #1	Desert Elementary	06	Black	Math	0							
2009-10	Sweetwater #1	Desert Elementary	06	Hispanic	Math	0							
2009-10	Sweetwater #1	Desert Elementary	06	American Indian/Alaska Native	Math	0							
2009-10	Sweetwater #1	Desert Elementary	06	White	Math	1 - 5							
2009-10	Sweetwater #1	Desert Elementary	06	Female	Math	1 - 5							
2009-10	Sweetwater #1	Desert Elementary	06	Male	Math	1 - 5							
2009-10	Sweetwater #1	Desert Elementary	06	English Language Learner	Math	0							
2009-10	Sweetwater #1	Desert Elementary	06	Free/Reduced Lunch	Math	1 - 5							
2009-10	Sweetwater #1	Desert Elementary	06	Individual Education Plan	Math	1 - 5							
2009-10	Sweetwater #1	Desert Elementary	06	All Students	Reading	1 - 5							
2009-10	Sweetwater #1	Desert Elementary	06	Asian/Pacific Islander	Reading	0							
2009-10	Sweetwater #1	Desert Elementary	06	Black	Reading	0							
2009-10	Sweetwater #1	Desert Elementary	06	Hispanic	Reading	0							
2009-10	Sweetwater #1	Desert Elementary	06	American Indian/Alaska Native	Reading	0							
2009-10	Sweetwater #1	Desert Elementary	06	White	Reading	1 - 5							
2009-10	Sweetwater #1	Desert Elementary	06	Female	Reading	1 - 5							
2009-10	Sweetwater #1	Desert Elementary	06	Male	Reading	1 - 5							
2009-10	Sweetwater #1	Desert Elementary	06	English Language Learner	Reading	0							
2009-10	Sweetwater #1	Desert Elementary	06	Free/Reduced Lunch	Reading	1 - 5							
2009-10	Sweetwater #1	Desert Elementary	06	Individual Education Plan	Reading	1 - 5							
2009-10	Sweetwater #1	Desert Elementary	06	All Students	Writing	1 - 5							
2009-10	Sweetwater #1	Desert Elementary	06	Asian/Pacific Islander	Writing	0							
2009-10	Sweetwater #1	Desert Elementary	06	Black	Writing	0							
2009-10	Sweetwater #1	Desert Elementary	06	Hispanic	Writing	0							
2009-10	Sweetwater #1	Desert Elementary	06	American Indian/Alaska Native	Writing	0							

Public PAWS Results - School Level - Disaggregated

School Year	District Name	School Name	Grade	Subgroup	Subject	Number of Students Tested	Participation Rate	Percent Below Basic	Percent Basic	Percent Proficient	Percent Advanced	Percent Basic and Blow	Percent Proficient and Advanced
2009-10	Sweetwater #1	Desert Elementary	06	White	Writing	1 - 5							
2009-10	Sweetwater #1	Desert Elementary	06	Female	Writing	1 - 5							
2009-10	Sweetwater #1	Desert Elementary	06	Male	Writing	1 - 5							
2009-10	Sweetwater #1	Desert Elementary	06	English Language Learner	Writing	0							
2009-10	Sweetwater #1	Desert Elementary	06	Free/Reduced Lunch	Writing	1 - 5							
2009-10	Sweetwater #1	Desert Elementary	06	Individual Education Plan	Writing	1 - 5							
2009-10	Sweetwater #1	Desert Middle School	07	All Students	Math	6 - 9	100.0%	11.11%	22.22%	66.67%	0.00%	33.33%	66.67%
2009-10	Sweetwater #1	Desert Middle School	07	Asian/Pacific Islander	Math	1 - 5							
2009-10	Sweetwater #1	Desert Middle School	07	Black	Math	0							
2009-10	Sweetwater #1	Desert Middle School	07	Hispanic	Math	1 - 5							
2009-10	Sweetwater #1	Desert Middle School	07	American Indian/Alaska Native	Math	1 - 5							
2009-10	Sweetwater #1	Desert Middle School	07	White	Math	1 - 5							
2009-10	Sweetwater #1	Desert Middle School	07	Female	Math	1 - 5							
2009-10	Sweetwater #1	Desert Middle School	07	Male	Math	6 - 9	100.0%						
2009-10	Sweetwater #1	Desert Middle School	07	English Language Learner	Math	1 - 5							
2009-10	Sweetwater #1	Desert Middle School	07	Free/Reduced Lunch	Math	1 - 5							
2009-10	Sweetwater #1	Desert Middle School	07	Individual Education Plan	Math	1 - 5							
2009-10	Sweetwater #1	Desert Middle School	07	All Students	Reading	6 - 9	100.0%	0.00%	66.67%	33.33%	0.00%	66.67%	33.33%
2009-10	Sweetwater #1	Desert Middle School	07	Asian/Pacific Islander	Reading	1 - 5							
2009-10	Sweetwater #1	Desert Middle School	07	Black	Reading	0							
2009-10	Sweetwater #1	Desert Middle School	07	Hispanic	Reading	1 - 5							
2009-10	Sweetwater #1	Desert Middle School	07	American Indian/Alaska Native	Reading	1 - 5							
2009-10	Sweetwater #1	Desert Middle School	07	White	Reading	1 - 5							
2009-10	Sweetwater #1	Desert Middle School	07	Female	Reading	1 - 5							
2009-10	Sweetwater #1	Desert Middle School	07	Male	Reading	6 - 9	100.0%						
2009-10	Sweetwater #1	Desert Middle School	07	English Language Learner	Reading	1 - 5							
2009-10	Sweetwater #1	Desert Middle School	07	Free/Reduced Lunch	Reading	1 - 5							
2009-10	Sweetwater #1	Desert Middle School	07	Individual Education Plan	Reading	1 - 5							

Public PAWS Results - School Level - Disaggregated

School Year	District Name	School Name	Grade	Subgroup	Subject	Number of Students Tested	Participation Rate	Percent Below Basic	Percent Basic	Percent Proficient	Percent Advanced	Percent Basic and Blow	Percent Proficient and Advanced
2009-10	Sweetwater #1	Desert Middle School	07	All Students	Writing	6 - 9	100.0%	11.11%	22.22%	44.44%	22.22%	33.33%	66.67%
2009-10	Sweetwater #1	Desert Middle School	07	Asian/Pacific Islander	Writing	1 - 5							
2009-10	Sweetwater #1	Desert Middle School	07	Black	Writing	0							
2009-10	Sweetwater #1	Desert Middle School	07	Hispanic	Writing	1 - 5							
2009-10	Sweetwater #1	Desert Middle School	07	American Indian/Alaska Native	Writing	1 - 5							
2009-10	Sweetwater #1	Desert Middle School	07	White	Writing	1 - 5							
2009-10	Sweetwater #1	Desert Middle School	07	Female	Writing	1 - 5							
2009-10	Sweetwater #1	Desert Middle School	07	Male	Writing	6 - 9	100.0%						
2009-10	Sweetwater #1	Desert Middle School	07	English Language Learner	Writing	1 - 5							
2009-10	Sweetwater #1	Desert Middle School	07	Free/Reduced Lunch	Writing	1 - 5							
2009-10	Sweetwater #1	Desert Middle School	07	Individual Education Plan	Writing	1 - 5							
2009-10	Sweetwater #1	Desert Middle School	08	All Students	Math	6 - 9	87.5%	14.29%	14.29%	57.14%	14.29%	28.57%	71.43%
2009-10	Sweetwater #1	Desert Middle School	08	Asian/Pacific Islander	Math	0							
2009-10	Sweetwater #1	Desert Middle School	08	Black	Math	0							
2009-10	Sweetwater #1	Desert Middle School	08	Hispanic	Math	1 - 5							
2009-10	Sweetwater #1	Desert Middle School	08	American Indian/Alaska Native	Math	0							
2009-10	Sweetwater #1	Desert Middle School	08	White	Math	1 - 5	83.3%						
2009-10	Sweetwater #1	Desert Middle School	08	Female	Math	1 - 5							
2009-10	Sweetwater #1	Desert Middle School	08	Male	Math	1 - 5							
2009-10	Sweetwater #1	Desert Middle School	08	English Language Learner	Math	1 - 5							
2009-10	Sweetwater #1	Desert Middle School	08	Free/Reduced Lunch	Math	1 - 5							
2009-10	Sweetwater #1	Desert Middle School	08	Individual Education Plan	Math	1 - 5							
2009-10	Sweetwater #1	Desert Middle School	08	All Students	Reading	6 - 9	87.5%	14.29%	14.29%	57.14%	14.29%	28.57%	71.43%
2009-10	Sweetwater #1	Desert Middle School	08	Asian/Pacific Islander	Reading	0							
2009-10	Sweetwater #1	Desert Middle School	08	Black	Reading	0							
2009-10	Sweetwater #1	Desert Middle School	08	Hispanic	Reading	1 - 5							
2009-10	Sweetwater #1	Desert Middle School	08	American Indian/Alaska Native	Reading	0							

Public PAWS Results - School Level - Disaggregated

School Year	District Name	School Name	Grade	Subgroup	Subject	Number of Students Tested	Participation Rate	Percent Below Basic	Percent Basic	Percent Proficient	Percent Advanced	Percent Basic and Below	Percent Proficient and Advanced
2009-10	Sweetwater #1	Desert Middle School	08	White	Reading	1 - 5	83.3%						
2009-10	Sweetwater #1	Desert Middle School	08	Female	Reading	1 - 5							
2009-10	Sweetwater #1	Desert Middle School	08	Male	Reading	1 - 5							
2009-10	Sweetwater #1	Desert Middle School	08	English Language Learner	Reading	1 - 5							
2009-10	Sweetwater #1	Desert Middle School	08	Free/Reduced Lunch	Reading	1 - 5							
2009-10	Sweetwater #1	Desert Middle School	08	Individual Education Plan	Reading	1 - 5							
2009-10	Sweetwater #1	Desert Middle School	08	All Students	Writing	6 - 9	87.5%					<= 20%	>= 80%
2009-10	Sweetwater #1	Desert Middle School	08	Asian/Pacific Islander	Writing	0							
2009-10	Sweetwater #1	Desert Middle School	08	Black	Writing	0							
2009-10	Sweetwater #1	Desert Middle School	08	Hispanic	Writing	1 - 5							
2009-10	Sweetwater #1	Desert Middle School	08	American Indian/Alaska Native	Writing	0							
2009-10	Sweetwater #1	Desert Middle School	08	White	Writing	1 - 5	83.3%						
2009-10	Sweetwater #1	Desert Middle School	08	Female	Writing	1 - 5							
2009-10	Sweetwater #1	Desert Middle School	08	Male	Writing	1 - 5							
2009-10	Sweetwater #1	Desert Middle School	08	English Language Learner	Writing	1 - 5							
2009-10	Sweetwater #1	Desert Middle School	08	Free/Reduced Lunch	Writing	1 - 5							
2009-10	Sweetwater #1	Desert Middle School	08	Individual Education Plan	Writing	1 - 5							
2009-10	Sweetwater #1	Desert Middle School	08	All Students	Science	6 - 9	87.5%	0.00%	42.86%	42.86%	14.29%	42.86%	57.14%
2009-10	Sweetwater #1	Desert Middle School	08	Asian/Pacific Islander	Science	0							
2009-10	Sweetwater #1	Desert Middle School	08	Black	Science	0							
2009-10	Sweetwater #1	Desert Middle School	08	Hispanic	Science	1 - 5							
2009-10	Sweetwater #1	Desert Middle School	08	American Indian/Alaska Native	Science	0							
2009-10	Sweetwater #1	Desert Middle School	08	White	Science	1 - 5	83.3%						
2009-10	Sweetwater #1	Desert Middle School	08	Female	Science	1 - 5							
2009-10	Sweetwater #1	Desert Middle School	08	Male	Science	1 - 5							
2009-10	Sweetwater #1	Desert Middle School	08	English Language Learner	Science	1 - 5							
2009-10	Sweetwater #1	Desert Middle School	08	Free/Reduced Lunch	Science	1 - 5							
2009-10	Sweetwater #1	Desert Middle School	08	Individual Education Plan	Science	1 - 5							

Public PAWS Results - School Level - Disaggregated

School Year	District Name	School Name	Grade	Subgroup	Subject	Number of Students Tested	Participation Rate	Percent Below Basic	Percent Basic	Percent Proficient	Percent Advanced	Percent Basic and Blow	Percent Proficient and Advanced
2009-10	Sweetwater #1	Desert View Elementary	03	All Students	Math	60 - 69	100.0%	0.00%	8.96%	68.66%	22.39%	8.96%	91.04%
2009-10	Sweetwater #1	Desert View Elementary	03	Asian/Pacific Islander	Math	0							
2009-10	Sweetwater #1	Desert View Elementary	03	Black	Math	1 - 5							
2009-10	Sweetwater #1	Desert View Elementary	03	Hispanic	Math	20 - 29	100.0%	0.00%	14.29%	66.67%	19.05%	14.29%	85.71%
2009-10	Sweetwater #1	Desert View Elementary	03	American Indian/Alaska Native	Math	0							
2009-10	Sweetwater #1	Desert View Elementary	03	White	Math	40 - 49	100.0%	0.00%	6.67%	68.89%	24.44%	6.67%	93.33%
2009-10	Sweetwater #1	Desert View Elementary	03	Female	Math	30 - 39	100.0%	0.00%	13.33%	73.33%	13.33%	13.33%	86.67%
2009-10	Sweetwater #1	Desert View Elementary	03	Male	Math	30 - 39	100.0%	0.00%	5.41%	64.86%	29.73%	5.41%	94.59%
2009-10	Sweetwater #1	Desert View Elementary	03	English Language Learner	Math	1 - 5							
2009-10	Sweetwater #1	Desert View Elementary	03	Free/Reduced Lunch	Math	40 - 49	100.0%	0.00%	9.52%	66.67%	23.81%	9.52%	90.48%
2009-10	Sweetwater #1	Desert View Elementary	03	Individual Education Plan	Math	10 - 19	100.0%					<= 10%	>= 90%
2009-10	Sweetwater #1	Desert View Elementary	03	All Students	Reading	60 - 69	100.0%	1.49%	38.81%	50.75%	8.96%	40.30%	59.70%
2009-10	Sweetwater #1	Desert View Elementary	03	Asian/Pacific Islander	Reading	0							
2009-10	Sweetwater #1	Desert View Elementary	03	Black	Reading	1 - 5							
2009-10	Sweetwater #1	Desert View Elementary	03	Hispanic	Reading	20 - 29	100.0%	4.76%	47.62%	42.86%	4.76%	52.38%	47.62%
2009-10	Sweetwater #1	Desert View Elementary	03	American Indian/Alaska Native	Reading	0							
2009-10	Sweetwater #1	Desert View Elementary	03	White	Reading	40 - 49	100.0%	0.00%	35.56%	53.33%	11.11%	35.56%	64.44%
2009-10	Sweetwater #1	Desert View Elementary	03	Female	Reading	30 - 39	100.0%	0.00%	36.67%	50.00%	13.33%	36.67%	63.33%
2009-10	Sweetwater #1	Desert View Elementary	03	Male	Reading	30 - 39	100.0%	2.70%	40.54%	51.35%	5.41%	43.24%	56.76%
2009-10	Sweetwater #1	Desert View Elementary	03	English Language Learner	Reading	1 - 5							
2009-10	Sweetwater #1	Desert View Elementary	03	Free/Reduced Lunch	Reading	40 - 49	100.0%	2.38%	42.86%	47.62%	7.14%	45.24%	54.76%
2009-10	Sweetwater #1	Desert View Elementary	03	Individual Education Plan	Reading	10 - 19	100.0%	0.00%	60.00%	30.00%	10.00%	60.00%	40.00%
2009-10	Sweetwater #1	Desert View Elementary	03	All Students	Writing	60 - 69	100.0%	0.00%	19.40%	55.22%	25.37%	19.40%	80.60%
2009-10	Sweetwater #1	Desert View Elementary	03	Asian/Pacific Islander	Writing	0							
2009-10	Sweetwater #1	Desert View Elementary	03	Black	Writing	1 - 5							
2009-10	Sweetwater #1	Desert View Elementary	03	Hispanic	Writing	20 - 29	100.0%	0.00%	38.10%	52.38%	9.52%	38.10%	61.90%
2009-10	Sweetwater #1	Desert View Elementary	03	American Indian/Alaska Native	Writing	0							

Public PAWS Results - School Level - Disaggregated

School Year	District Name	School Name	Grade	Subgroup	Subject	Number of Students Tested	Participation Rate	Percent Below Basic	Percent Basic	Percent Proficient	Percent Advanced	Percent Basic and Blow	Percent Proficient and Advanced
2009-10	Sweetwater #1	Desert View Elementary	03	White	Writing	40 - 49	100.0%	0.00%	11.11%	55.56%	33.33%	11.11%	88.89%
2009-10	Sweetwater #1	Desert View Elementary	03	Female	Writing	30 - 39	100.0%	0.00%	10.00%	60.00%	30.00%	10.00%	90.00%
2009-10	Sweetwater #1	Desert View Elementary	03	Male	Writing	30 - 39	100.0%	0.00%	27.03%	51.35%	21.62%	27.03%	72.97%
2009-10	Sweetwater #1	Desert View Elementary	03	English Language Learner	Writing	1 - 5							
2009-10	Sweetwater #1	Desert View Elementary	03	Free/Reduced Lunch	Writing	40 - 49	100.0%	0.00%	23.81%	54.76%	21.43%	23.81%	76.19%
2009-10	Sweetwater #1	Desert View Elementary	03	Individual Education Plan	Writing	10 - 19	100.0%					<= 10%	>= 90%
2009-10	Sweetwater #1	Desert View Elementary	04	All Students	Math	80 - 89	100.0%	7.41%	13.58%	62.96%	16.05%	20.99%	79.01%
2009-10	Sweetwater #1	Desert View Elementary	04	Asian/Pacific Islander	Math	0							
2009-10	Sweetwater #1	Desert View Elementary	04	Black	Math	0							
2009-10	Sweetwater #1	Desert View Elementary	04	Hispanic	Math	20 - 29	100.0%	3.70%	7.41%	77.78%	11.11%	11.11%	88.89%
2009-10	Sweetwater #1	Desert View Elementary	04	American Indian/Alaska Native	Math	1 - 5							
2009-10	Sweetwater #1	Desert View Elementary	04	White	Math	50 - 59	100.0%	9.43%	16.98%	56.60%	16.98%	26.42%	73.58%
2009-10	Sweetwater #1	Desert View Elementary	04	Female	Math	40 - 49	100.0%	7.14%	11.90%	71.43%	9.52%	19.05%	80.95%
2009-10	Sweetwater #1	Desert View Elementary	04	Male	Math	30 - 39	100.0%	7.69%	15.38%	53.85%	23.08%	23.08%	76.92%
2009-10	Sweetwater #1	Desert View Elementary	04	English Language Learner	Math	1 - 5							
2009-10	Sweetwater #1	Desert View Elementary	04	Free/Reduced Lunch	Math	50 - 59	100.0%	9.80%	15.69%	58.82%	15.69%	25.49%	74.51%
2009-10	Sweetwater #1	Desert View Elementary	04	Individual Education Plan	Math	10 - 19	100.0%	31.25%	31.25%	31.25%	6.25%	62.50%	37.50%
2009-10	Sweetwater #1	Desert View Elementary	04	All Students	Reading	80 - 89	100.0%	2.47%	35.80%	53.09%	8.64%	38.27%	61.73%
2009-10	Sweetwater #1	Desert View Elementary	04	Asian/Pacific Islander	Reading	0							
2009-10	Sweetwater #1	Desert View Elementary	04	Black	Reading	0							
2009-10	Sweetwater #1	Desert View Elementary	04	Hispanic	Reading	20 - 29	100.0%	0.00%	33.33%	59.26%	7.41%	33.33%	66.67%
2009-10	Sweetwater #1	Desert View Elementary	04	American Indian/Alaska Native	Reading	1 - 5							
2009-10	Sweetwater #1	Desert View Elementary	04	White	Reading	50 - 59	100.0%	3.77%	37.74%	49.06%	9.43%	41.51%	58.49%
2009-10	Sweetwater #1	Desert View Elementary	04	Female	Reading	40 - 49	100.0%	2.38%	45.24%	45.24%	7.14%	47.62%	52.38%
2009-10	Sweetwater #1	Desert View Elementary	04	Male	Reading	30 - 39	100.0%	2.56%	25.64%	61.54%	10.26%	28.21%	71.79%
2009-10	Sweetwater #1	Desert View Elementary	04	English Language Learner	Reading	1 - 5							
2009-10	Sweetwater #1	Desert View Elementary	04	Free/Reduced Lunch	Reading	50 - 59	100.0%	3.92%	37.25%	52.94%	5.88%	41.18%	58.82%
2009-10	Sweetwater #1	Desert View Elementary	04	Individual Education Plan	Reading	10 - 19	100.0%	0.00%	50.00%	50.00%	0.00%	50.00%	50.00%

Public PAWS Results - School Level - Disaggregated

School Year	District Name	School Name	Grade	Subgroup	Subject	Number of Students Tested	Participation Rate	Percent Below Basic	Percent Basic	Percent Proficient	Percent Advanced	Percent Basic and Blow	Percent Proficient and Advanced
2009-10	Sweetwater #1	Desert View Elementary	04	All Students	Writing	80 - 89	100.0%	1.23%	27.16%	64.20%	7.41%	28.40%	71.60%
2009-10	Sweetwater #1	Desert View Elementary	04	Asian/Pacific Islander	Writing	0							
2009-10	Sweetwater #1	Desert View Elementary	04	Black	Writing	0							
2009-10	Sweetwater #1	Desert View Elementary	04	Hispanic	Writing	20 - 29	100.0%	3.70%	22.22%	66.67%	7.41%	25.93%	74.07%
2009-10	Sweetwater #1	Desert View Elementary	04	American Indian/Alaska Native	Writing	1 - 5							
2009-10	Sweetwater #1	Desert View Elementary	04	White	Writing	50 - 59	100.0%	0.00%	30.19%	62.26%	7.55%	30.19%	69.81%
2009-10	Sweetwater #1	Desert View Elementary	04	Female	Writing	40 - 49	100.0%	0.00%	30.95%	57.14%	11.90%	30.95%	69.05%
2009-10	Sweetwater #1	Desert View Elementary	04	Male	Writing	30 - 39	100.0%	2.56%	23.08%	71.79%	2.56%	25.64%	74.36%
2009-10	Sweetwater #1	Desert View Elementary	04	English Language Learner	Writing	1 - 5							
2009-10	Sweetwater #1	Desert View Elementary	04	Free/Reduced Lunch	Writing	50 - 59	100.0%	1.96%	23.53%	64.71%	9.80%	25.49%	74.51%
2009-10	Sweetwater #1	Desert View Elementary	04	Individual Education Plan	Writing	10 - 19	100.0%	0.00%	31.25%	68.75%	0.00%	31.25%	68.75%
2009-10	Sweetwater #1	Desert View Elementary	04	All Students	Science	80 - 89	100.0%	17.28%	46.91%	34.57%	1.23%	64.20%	35.80%
2009-10	Sweetwater #1	Desert View Elementary	04	Asian/Pacific Islander	Science	0							
2009-10	Sweetwater #1	Desert View Elementary	04	Black	Science	0							
2009-10	Sweetwater #1	Desert View Elementary	04	Hispanic	Science	20 - 29	100.0%	14.81%	44.44%	40.74%	0.00%	59.26%	40.74%
2009-10	Sweetwater #1	Desert View Elementary	04	American Indian/Alaska Native	Science	1 - 5							
2009-10	Sweetwater #1	Desert View Elementary	04	White	Science	50 - 59	100.0%	18.87%	47.17%	32.08%	1.89%	66.04%	33.96%
2009-10	Sweetwater #1	Desert View Elementary	04	Female	Science	40 - 49	100.0%	21.43%	50.00%	26.19%	2.38%	71.43%	28.57%
2009-10	Sweetwater #1	Desert View Elementary	04	Male	Science	30 - 39	100.0%	12.82%	43.59%	43.59%	0.00%	56.41%	43.59%
2009-10	Sweetwater #1	Desert View Elementary	04	English Language Learner	Science	1 - 5							
2009-10	Sweetwater #1	Desert View Elementary	04	Free/Reduced Lunch	Science	50 - 59	100.0%	23.53%	45.10%	31.37%	0.00%	68.63%	31.37%
2009-10	Sweetwater #1	Desert View Elementary	04	Individual Education Plan	Science	10 - 19	100.0%	25.00%	37.50%	37.50%	0.00%	62.50%	37.50%
2009-10	Sweetwater #1	Farson-Eden Elementary	03	All Students	Math	10 - 19	100.0%					<= 10%	>= 90%
2009-10	Sweetwater #1	Farson-Eden Elementary	03	Asian/Pacific Islander	Math	0							
2009-10	Sweetwater #1	Farson-Eden Elementary	03	Black	Math	0							
2009-10	Sweetwater #1	Farson-Eden Elementary	03	Hispanic	Math	0							
2009-10	Sweetwater #1	Farson-Eden Elementary	03	American Indian/Alaska Native	Math	0							

Public PAWS Results - School Level - Disaggregated

School Year	District Name	School Name	Grade	Subgroup	Subject	Number of Students Tested	Participation Rate	Percent Below Basic	Percent Basic	Percent Proficient	Percent Advanced	Percent Basic and Blow	Percent Proficient and Advanced
2009-10	Sweetwater #1	Farson-Eden Elementary	03	White	Math	10 - 19	100.0%					<= 10%	>= 90%
2009-10	Sweetwater #1	Farson-Eden Elementary	03	Female	Math	6 - 9	100.0%					<= 20%	>= 80%
2009-10	Sweetwater #1	Farson-Eden Elementary	03	Male	Math	6 - 9	100.0%					<= 20%	>= 80%
2009-10	Sweetwater #1	Farson-Eden Elementary	03	English Language Learner	Math	0							
2009-10	Sweetwater #1	Farson-Eden Elementary	03	Free/Reduced Lunch	Math	6 - 9	100.0%					<= 20%	>= 80%
2009-10	Sweetwater #1	Farson-Eden Elementary	03	Individual Education Plan	Math	1 - 5							
2009-10	Sweetwater #1	Farson-Eden Elementary	03	All Students	Reading	10 - 19	100.0%	13.33%	20.00%	53.33%	13.33%	33.33%	66.67%
2009-10	Sweetwater #1	Farson-Eden Elementary	03	Asian/Pacific Islander	Reading	0							
2009-10	Sweetwater #1	Farson-Eden Elementary	03	Black	Reading	0							
2009-10	Sweetwater #1	Farson-Eden Elementary	03	Hispanic	Reading	0							
2009-10	Sweetwater #1	Farson-Eden Elementary	03	American Indian/Alaska Native	Reading	0							
2009-10	Sweetwater #1	Farson-Eden Elementary	03	White	Reading	10 - 19	100.0%	13.33%	20.00%	53.33%	13.33%	33.33%	66.67%
2009-10	Sweetwater #1	Farson-Eden Elementary	03	Female	Reading	6 - 9	100.0%					<= 20%	>= 80%
2009-10	Sweetwater #1	Farson-Eden Elementary	03	Male	Reading	6 - 9	100.0%	22.22%	22.22%	44.44%	11.11%	44.44%	55.56%
2009-10	Sweetwater #1	Farson-Eden Elementary	03	English Language Learner	Reading	0							
2009-10	Sweetwater #1	Farson-Eden Elementary	03	Free/Reduced Lunch	Reading	6 - 9	100.0%					<= 20%	>= 80%
2009-10	Sweetwater #1	Farson-Eden Elementary	03	Individual Education Plan	Reading	1 - 5							
2009-10	Sweetwater #1	Farson-Eden Elementary	03	All Students	Writing	10 - 19	100.0%	0.00%	20.00%	60.00%	20.00%	20.00%	80.00%
2009-10	Sweetwater #1	Farson-Eden Elementary	03	Asian/Pacific Islander	Writing	0							
2009-10	Sweetwater #1	Farson-Eden Elementary	03	Black	Writing	0							
2009-10	Sweetwater #1	Farson-Eden Elementary	03	Hispanic	Writing	0							
2009-10	Sweetwater #1	Farson-Eden Elementary	03	American Indian/Alaska Native	Writing	0							
2009-10	Sweetwater #1	Farson-Eden Elementary	03	White	Writing	10 - 19	100.0%	0.00%	20.00%	60.00%	20.00%	20.00%	80.00%
2009-10	Sweetwater #1	Farson-Eden Elementary	03	Female	Writing	6 - 9	100.0%					<= 20%	>= 80%
2009-10	Sweetwater #1	Farson-Eden Elementary	03	Male	Writing	6 - 9	100.0%	0.00%	33.33%	55.56%	11.11%	33.33%	66.67%
2009-10	Sweetwater #1	Farson-Eden Elementary	03	English Language Learner	Writing	0							
2009-10	Sweetwater #1	Farson-Eden Elementary	03	Free/Reduced Lunch	Writing	6 - 9	100.0%					<= 20%	>= 80%
2009-10	Sweetwater #1	Farson-Eden Elementary	03	Individual Education Plan	Writing	1 - 5							

Public PAWS Results - School Level - Disaggregated

School Year	District Name	School Name	Grade	Subgroup	Subject	Number of Students Tested	Participation Rate	Percent Below Basic	Percent Basic	Percent Proficient	Percent Advanced	Percent Basic and Blow	Percent Proficient and Advanced
2009-10	Sweetwater #1	Farson-Eden Elementary	04	All Students	Math	10 - 19	100.0%	0.00%	18.18%	27.27%	54.55%	18.18%	81.82%
2009-10	Sweetwater #1	Farson-Eden Elementary	04	Asian/Pacific Islander	Math	0							
2009-10	Sweetwater #1	Farson-Eden Elementary	04	Black	Math	0							
2009-10	Sweetwater #1	Farson-Eden Elementary	04	Hispanic	Math	1 - 5							
2009-10	Sweetwater #1	Farson-Eden Elementary	04	American Indian/Alaska Native	Math	0							
2009-10	Sweetwater #1	Farson-Eden Elementary	04	White	Math	6 - 9	100.0%						
2009-10	Sweetwater #1	Farson-Eden Elementary	04	Female	Math	1 - 5							
2009-10	Sweetwater #1	Farson-Eden Elementary	04	Male	Math	6 - 9	100.0%						
2009-10	Sweetwater #1	Farson-Eden Elementary	04	English Language Learner	Math	0							
2009-10	Sweetwater #1	Farson-Eden Elementary	04	Free/Reduced Lunch	Math	1 - 5							
2009-10	Sweetwater #1	Farson-Eden Elementary	04	Individual Education Plan	Math	1 - 5							
2009-10	Sweetwater #1	Farson-Eden Elementary	04	All Students	Reading	10 - 19	100.0%					<= 10%	>= 90%
2009-10	Sweetwater #1	Farson-Eden Elementary	04	Asian/Pacific Islander	Reading	0							
2009-10	Sweetwater #1	Farson-Eden Elementary	04	Black	Reading	0							
2009-10	Sweetwater #1	Farson-Eden Elementary	04	Hispanic	Reading	1 - 5							
2009-10	Sweetwater #1	Farson-Eden Elementary	04	American Indian/Alaska Native	Reading	0							
2009-10	Sweetwater #1	Farson-Eden Elementary	04	White	Reading	6 - 9	100.0%						
2009-10	Sweetwater #1	Farson-Eden Elementary	04	Female	Reading	1 - 5							
2009-10	Sweetwater #1	Farson-Eden Elementary	04	Male	Reading	6 - 9	100.0%						
2009-10	Sweetwater #1	Farson-Eden Elementary	04	English Language Learner	Reading	0							
2009-10	Sweetwater #1	Farson-Eden Elementary	04	Free/Reduced Lunch	Reading	1 - 5							
2009-10	Sweetwater #1	Farson-Eden Elementary	04	Individual Education Plan	Reading	1 - 5							
2009-10	Sweetwater #1	Farson-Eden Elementary	04	All Students	Writing	10 - 19	100.0%					<= 10%	>= 90%
2009-10	Sweetwater #1	Farson-Eden Elementary	04	Asian/Pacific Islander	Writing	0							
2009-10	Sweetwater #1	Farson-Eden Elementary	04	Black	Writing	0							
2009-10	Sweetwater #1	Farson-Eden Elementary	04	Hispanic	Writing	1 - 5							
2009-10	Sweetwater #1	Farson-Eden Elementary	04	American Indian/Alaska Native	Writing	0							

Public PAWS Results - School Level - Disaggregated

School Year	District Name	School Name	Grade	Subgroup	Subject	Number of Students Tested	Participation Rate	Percent Below Basic	Percent Basic	Percent Proficient	Percent Advanced	Percent Basic and Blow	Percent Proficient and Advanced
2009-10	Sweetwater #1	Farson-Eden Elementary	04	White	Writing	6 - 9	100.0%						
2009-10	Sweetwater #1	Farson-Eden Elementary	04	Female	Writing	1 - 5							
2009-10	Sweetwater #1	Farson-Eden Elementary	04	Male	Writing	6 - 9	100.0%						
2009-10	Sweetwater #1	Farson-Eden Elementary	04	English Language Learner	Writing	0							
2009-10	Sweetwater #1	Farson-Eden Elementary	04	Free/Reduced Lunch	Writing	1 - 5							
2009-10	Sweetwater #1	Farson-Eden Elementary	04	Individual Education Plan	Writing	1 - 5							
2009-10	Sweetwater #1	Farson-Eden Elementary	04	All Students	Science	10 - 19	100.0%	9.09%	9.09%	45.45%	36.36%	18.18%	81.82%
2009-10	Sweetwater #1	Farson-Eden Elementary	04	Asian/Pacific Islander	Science	0							
2009-10	Sweetwater #1	Farson-Eden Elementary	04	Black	Science	0							
2009-10	Sweetwater #1	Farson-Eden Elementary	04	Hispanic	Science	1 - 5							
2009-10	Sweetwater #1	Farson-Eden Elementary	04	American Indian/Alaska Native	Science	0							
2009-10	Sweetwater #1	Farson-Eden Elementary	04	White	Science	6 - 9	100.0%						
2009-10	Sweetwater #1	Farson-Eden Elementary	04	Female	Science	1 - 5							
2009-10	Sweetwater #1	Farson-Eden Elementary	04	Male	Science	6 - 9	100.0%						
2009-10	Sweetwater #1	Farson-Eden Elementary	04	English Language Learner	Science	0							
2009-10	Sweetwater #1	Farson-Eden Elementary	04	Free/Reduced Lunch	Science	1 - 5							
2009-10	Sweetwater #1	Farson-Eden Elementary	04	Individual Education Plan	Science	1 - 5							
2009-10	Sweetwater #1	Farson-Eden Elementary	05	All Students	Math	10 - 19	100.0%					<= 10%	>= 90%
2009-10	Sweetwater #1	Farson-Eden Elementary	05	Asian/Pacific Islander	Math	0							
2009-10	Sweetwater #1	Farson-Eden Elementary	05	Black	Math	0							
2009-10	Sweetwater #1	Farson-Eden Elementary	05	Hispanic	Math	0							
2009-10	Sweetwater #1	Farson-Eden Elementary	05	American Indian/Alaska Native	Math	0							
2009-10	Sweetwater #1	Farson-Eden Elementary	05	White	Math	10 - 19	100.0%					<= 10%	>= 90%
2009-10	Sweetwater #1	Farson-Eden Elementary	05	Female	Math	6 - 9	100.0%						
2009-10	Sweetwater #1	Farson-Eden Elementary	05	Male	Math	1 - 5							
2009-10	Sweetwater #1	Farson-Eden Elementary	05	English Language Learner	Math	0							
2009-10	Sweetwater #1	Farson-Eden Elementary	05	Free/Reduced Lunch	Math	1 - 5							
2009-10	Sweetwater #1	Farson-Eden Elementary	05	Individual Education Plan	Math	1 - 5							

Public PAWS Results - School Level - Disaggregated

School Year	District Name	School Name	Grade	Subgroup	Subject	Number of Students Tested	Participation Rate	Percent Below Basic	Percent Basic	Percent Proficient	Percent Advanced	Percent Basic and Blow	Percent Proficient and Advanced
2009-10	Sweetwater #1	Farson-Eden Elementary	05	All Students	Reading	10 - 19	100.0%	0.00%	30.77%	53.85%	15.38%	30.77%	69.23%
2009-10	Sweetwater #1	Farson-Eden Elementary	05	Asian/Pacific Islander	Reading	0							
2009-10	Sweetwater #1	Farson-Eden Elementary	05	Black	Reading	0							
2009-10	Sweetwater #1	Farson-Eden Elementary	05	Hispanic	Reading	0							
2009-10	Sweetwater #1	Farson-Eden Elementary	05	American Indian/Alaska Native	Reading	0							
2009-10	Sweetwater #1	Farson-Eden Elementary	05	White	Reading	10 - 19	100.0%	0.00%	30.77%	53.85%	15.38%	30.77%	69.23%
2009-10	Sweetwater #1	Farson-Eden Elementary	05	Female	Reading	6 - 9	100.0%						
2009-10	Sweetwater #1	Farson-Eden Elementary	05	Male	Reading	1 - 5							
2009-10	Sweetwater #1	Farson-Eden Elementary	05	English Language Learner	Reading	0							
2009-10	Sweetwater #1	Farson-Eden Elementary	05	Free/Reduced Lunch	Reading	1 - 5							
2009-10	Sweetwater #1	Farson-Eden Elementary	05	Individual Education Plan	Reading	1 - 5							
2009-10	Sweetwater #1	Farson-Eden Elementary	05	All Students	Writing	10 - 19	100.0%					<= 10%	>= 90%
2009-10	Sweetwater #1	Farson-Eden Elementary	05	Asian/Pacific Islander	Writing	0							
2009-10	Sweetwater #1	Farson-Eden Elementary	05	Black	Writing	0							
2009-10	Sweetwater #1	Farson-Eden Elementary	05	Hispanic	Writing	0							
2009-10	Sweetwater #1	Farson-Eden Elementary	05	American Indian/Alaska Native	Writing	0							
2009-10	Sweetwater #1	Farson-Eden Elementary	05	White	Writing	10 - 19	100.0%					<= 10%	>= 90%
2009-10	Sweetwater #1	Farson-Eden Elementary	05	Female	Writing	6 - 9	100.0%						
2009-10	Sweetwater #1	Farson-Eden Elementary	05	Male	Writing	1 - 5							
2009-10	Sweetwater #1	Farson-Eden Elementary	05	English Language Learner	Writing	0							
2009-10	Sweetwater #1	Farson-Eden Elementary	05	Free/Reduced Lunch	Writing	1 - 5							
2009-10	Sweetwater #1	Farson-Eden Elementary	05	Individual Education Plan	Writing	1 - 5							
2009-10	Sweetwater #1	Farson-Eden High School	11	All Students	Math	6 - 9	90.0%	11.11%	33.33%	44.44%	11.11%	44.44%	55.56%
2009-10	Sweetwater #1	Farson-Eden High School	11	Asian/Pacific Islander	Math	0							
2009-10	Sweetwater #1	Farson-Eden High School	11	Black	Math	0							
2009-10	Sweetwater #1	Farson-Eden High School	11	Hispanic	Math	0							
2009-10	Sweetwater #1	Farson-Eden High School	11	American Indian/Alaska Native	Math	1 - 5							

Public PAWS Results - School Level - Disaggregated

School Year	District Name	School Name	Grade	Subgroup	Subject	Number of Students Tested	Participation Rate	Percent Below Basic	Percent Basic	Percent Proficient	Percent Advanced	Percent Basic and Blow	Percent Proficient and Advanced
2009-10	Sweetwater #1	Farson-Eden High School	11	White	Math	6 - 9	88.9%						
2009-10	Sweetwater #1	Farson-Eden High School	11	Female	Math	1 - 5							
2009-10	Sweetwater #1	Farson-Eden High School	11	Male	Math	1 - 5							
2009-10	Sweetwater #1	Farson-Eden High School	11	English Language Learner	Math	0							
2009-10	Sweetwater #1	Farson-Eden High School	11	Free/Reduced Lunch	Math	1 - 5							
2009-10	Sweetwater #1	Farson-Eden High School	11	Individual Education Plan	Math	1 - 5							
2009-10	Sweetwater #1	Farson-Eden High School	11	All Students	Reading	6 - 9	90.0%	11.11%	11.11%	66.67%	11.11%	22.22%	77.78%
2009-10	Sweetwater #1	Farson-Eden High School	11	Asian/Pacific Islander	Reading	0							
2009-10	Sweetwater #1	Farson-Eden High School	11	Black	Reading	0							
2009-10	Sweetwater #1	Farson-Eden High School	11	Hispanic	Reading	0							
2009-10	Sweetwater #1	Farson-Eden High School	11	American Indian/Alaska Native	Reading	1 - 5							
2009-10	Sweetwater #1	Farson-Eden High School	11	White	Reading	6 - 9	88.9%						
2009-10	Sweetwater #1	Farson-Eden High School	11	Female	Reading	1 - 5							
2009-10	Sweetwater #1	Farson-Eden High School	11	Male	Reading	1 - 5							
2009-10	Sweetwater #1	Farson-Eden High School	11	English Language Learner	Reading	0							
2009-10	Sweetwater #1	Farson-Eden High School	11	Free/Reduced Lunch	Reading	1 - 5							
2009-10	Sweetwater #1	Farson-Eden High School	11	Individual Education Plan	Reading	1 - 5							
2009-10	Sweetwater #1	Farson-Eden High School	11	All Students	Writing	6 - 9	90.0%					<= 20%	>= 80%
2009-10	Sweetwater #1	Farson-Eden High School	11	Asian/Pacific Islander	Writing	0							
2009-10	Sweetwater #1	Farson-Eden High School	11	Black	Writing	0							
2009-10	Sweetwater #1	Farson-Eden High School	11	Hispanic	Writing	0							
2009-10	Sweetwater #1	Farson-Eden High School	11	American Indian/Alaska Native	Writing	1 - 5							
2009-10	Sweetwater #1	Farson-Eden High School	11	White	Writing	6 - 9	88.9%						
2009-10	Sweetwater #1	Farson-Eden High School	11	Female	Writing	1 - 5							
2009-10	Sweetwater #1	Farson-Eden High School	11	Male	Writing	1 - 5							
2009-10	Sweetwater #1	Farson-Eden High School	11	English Language Learner	Writing	0							
2009-10	Sweetwater #1	Farson-Eden High School	11	Free/Reduced Lunch	Writing	1 - 5							
2009-10	Sweetwater #1	Farson-Eden High School	11	Individual Education Plan	Writing	1 - 5							

Public PAWS Results - School Level - Disaggregated

School Year	District Name	School Name	Grade	Subgroup	Subject	Number of Students Tested	Participation Rate	Percent Below Basic	Percent Basic	Percent Proficient	Percent Advanced	Percent Basic and Blow	Percent Proficient and Advanced
2009-10	Sweetwater #1	Farson-Eden High School	11	All Students	Science	6 - 9	90.0%	0.00%	44.44%	44.44%	11.11%	44.44%	55.56%
2009-10	Sweetwater #1	Farson-Eden High School	11	Asian/Pacific Islander	Science	0							
2009-10	Sweetwater #1	Farson-Eden High School	11	Black	Science	0							
2009-10	Sweetwater #1	Farson-Eden High School	11	Hispanic	Science	0							
2009-10	Sweetwater #1	Farson-Eden High School	11	American Indian/Alaska Native	Science	1 - 5							
2009-10	Sweetwater #1	Farson-Eden High School	11	White	Science	6 - 9	88.9%						
2009-10	Sweetwater #1	Farson-Eden High School	11	Female	Science	1 - 5							
2009-10	Sweetwater #1	Farson-Eden High School	11	Male	Science	1 - 5							
2009-10	Sweetwater #1	Farson-Eden High School	11	English Language Learner	Science	0							
2009-10	Sweetwater #1	Farson-Eden High School	11	Free/Reduced Lunch	Science	1 - 5							
2009-10	Sweetwater #1	Farson-Eden High School	11	Individual Education Plan	Science	1 - 5							
2009-10	Sweetwater #1	Farson-Eden Middle School	06	All Students	Math	10 - 19	100.0%	16.67%	16.67%	58.33%	8.33%	33.33%	66.67%
2009-10	Sweetwater #1	Farson-Eden Middle School	06	Asian/Pacific Islander	Math	0							
2009-10	Sweetwater #1	Farson-Eden Middle School	06	Black	Math	0							
2009-10	Sweetwater #1	Farson-Eden Middle School	06	Hispanic	Math	1 - 5							
2009-10	Sweetwater #1	Farson-Eden Middle School	06	American Indian/Alaska Native	Math	0							
2009-10	Sweetwater #1	Farson-Eden Middle School	06	White	Math	10 - 19	100.0%						
2009-10	Sweetwater #1	Farson-Eden Middle School	06	Female	Math	1 - 5							
2009-10	Sweetwater #1	Farson-Eden Middle School	06	Male	Math	6 - 9	100.0%						
2009-10	Sweetwater #1	Farson-Eden Middle School	06	English Language Learner	Math	1 - 5							
2009-10	Sweetwater #1	Farson-Eden Middle School	06	Free/Reduced Lunch	Math	1 - 5							
2009-10	Sweetwater #1	Farson-Eden Middle School	06	Individual Education Plan	Math	1 - 5							
2009-10	Sweetwater #1	Farson-Eden Middle School	06	All Students	Reading	10 - 19	100.0%	16.67%	16.67%	50.00%	16.67%	33.33%	66.67%
2009-10	Sweetwater #1	Farson-Eden Middle School	06	Asian/Pacific Islander	Reading	0							

Public PAWS Results - School Level - Disaggregated

School Year	District Name	School Name	Grade	Subgroup	Subject	Number of Students Tested	Participation Rate	Percent Below Basic	Percent Basic	Percent Proficient	Percent Advanced	Percent Basic and Blow	Percent Proficient and Advanced
2009-10	Sweetwater #1	Farson-Eden Middle School	06	Black	Reading	0							
2009-10	Sweetwater #1	Farson-Eden Middle School	06	Hispanic	Reading	1 - 5							
2009-10	Sweetwater #1	Farson-Eden Middle School	06	American Indian/Alaska Native	Reading	0							
2009-10	Sweetwater #1	Farson-Eden Middle School	06	White	Reading	10 - 19	100.0%						
2009-10	Sweetwater #1	Farson-Eden Middle School	06	Female	Reading	1 - 5							
2009-10	Sweetwater #1	Farson-Eden Middle School	06	Male	Reading	6 - 9	100.0%						
2009-10	Sweetwater #1	Farson-Eden Middle School	06	English Language Learner	Reading	1 - 5							
2009-10	Sweetwater #1	Farson-Eden Middle School	06	Free/Reduced Lunch	Reading	1 - 5							
2009-10	Sweetwater #1	Farson-Eden Middle School	06	Individual Education Plan	Reading	1 - 5							
2009-10	Sweetwater #1	Farson-Eden Middle School	06	All Students	Writing	10 - 19	100.0%	16.67%	33.33%	33.33%	16.67%	50.00%	50.00%
2009-10	Sweetwater #1	Farson-Eden Middle School	06	Asian/Pacific Islander	Writing	0							
2009-10	Sweetwater #1	Farson-Eden Middle School	06	Black	Writing	0							
2009-10	Sweetwater #1	Farson-Eden Middle School	06	Hispanic	Writing	1 - 5							
2009-10	Sweetwater #1	Farson-Eden Middle School	06	American Indian/Alaska Native	Writing	0							
2009-10	Sweetwater #1	Farson-Eden Middle School	06	White	Writing	10 - 19	100.0%						
2009-10	Sweetwater #1	Farson-Eden Middle School	06	Female	Writing	1 - 5							
2009-10	Sweetwater #1	Farson-Eden Middle School	06	Male	Writing	6 - 9	100.0%						
2009-10	Sweetwater #1	Farson-Eden Middle School	06	English Language Learner	Writing	1 - 5							
2009-10	Sweetwater #1	Farson-Eden Middle School	06	Free/Reduced Lunch	Writing	1 - 5							
2009-10	Sweetwater #1	Farson-Eden Middle School	06	Individual Education Plan	Writing	1 - 5							
2009-10	Sweetwater #1	Farson-Eden Middle School	07	All Students	Math	10 - 19	100.0%	5.88%	23.53%	58.82%	11.76%	29.41%	70.59%
2009-10	Sweetwater #1	Farson-Eden Middle School	07	Asian/Pacific Islander	Math	0							

Public PAWS Results - School Level - Disaggregated

School Year	District Name	School Name	Grade	Subgroup	Subject	Number of Students Tested	Participation Rate	Percent Below Basic	Percent Basic	Percent Proficient	Percent Advanced	Percent Basic and Blow	Percent Proficient and Advanced
2009-10	Sweetwater #1	Farson-Eden Middle School	07	Black	Math	0							
2009-10	Sweetwater #1	Farson-Eden Middle School	07	Hispanic	Math	1 - 5							
2009-10	Sweetwater #1	Farson-Eden Middle School	07	American Indian/Alaska Native	Math	1 - 5							
2009-10	Sweetwater #1	Farson-Eden Middle School	07	White	Math	10 - 19	100.0%						
2009-10	Sweetwater #1	Farson-Eden Middle School	07	Female	Math	1 - 5							
2009-10	Sweetwater #1	Farson-Eden Middle School	07	Male	Math	10 - 19	100.0%						
2009-10	Sweetwater #1	Farson-Eden Middle School	07	English Language Learner	Math	0							
2009-10	Sweetwater #1	Farson-Eden Middle School	07	Free/Reduced Lunch	Math	1 - 5							
2009-10	Sweetwater #1	Farson-Eden Middle School	07	Individual Education Plan	Math	1 - 5							
2009-10	Sweetwater #1	Farson-Eden Middle School	07	All Students	Reading	10 - 19	100.0%	5.88%	41.18%	47.06%	5.88%	47.06%	52.94%
2009-10	Sweetwater #1	Farson-Eden Middle School	07	Asian/Pacific Islander	Reading	0							
2009-10	Sweetwater #1	Farson-Eden Middle School	07	Black	Reading	0							
2009-10	Sweetwater #1	Farson-Eden Middle School	07	Hispanic	Reading	1 - 5							
2009-10	Sweetwater #1	Farson-Eden Middle School	07	American Indian/Alaska Native	Reading	1 - 5							
2009-10	Sweetwater #1	Farson-Eden Middle School	07	White	Reading	10 - 19	100.0%						
2009-10	Sweetwater #1	Farson-Eden Middle School	07	Female	Reading	1 - 5							
2009-10	Sweetwater #1	Farson-Eden Middle School	07	Male	Reading	10 - 19	100.0%						
2009-10	Sweetwater #1	Farson-Eden Middle School	07	English Language Learner	Reading	0							
2009-10	Sweetwater #1	Farson-Eden Middle School	07	Free/Reduced Lunch	Reading	1 - 5							
2009-10	Sweetwater #1	Farson-Eden Middle School	07	Individual Education Plan	Reading	1 - 5							
2009-10	Sweetwater #1	Farson-Eden Middle School	07	All Students	Writing	10 - 19	100.0%	0.00%	23.53%	41.18%	35.29%	23.53%	76.47%
2009-10	Sweetwater #1	Farson-Eden Middle School	07	Asian/Pacific Islander	Writing	0							

Public PAWS Results - School Level - Disaggregated

School Year	District Name	School Name	Grade	Subgroup	Subject	Number of Students Tested	Participation Rate	Percent Below Basic	Percent Basic	Percent Proficient	Percent Advanced	Percent Basic and Blow	Percent Proficient and Advanced
2009-10	Sweetwater #1	Farson-Eden Middle School	07	Black	Writing	0							
2009-10	Sweetwater #1	Farson-Eden Middle School	07	Hispanic	Writing	1 - 5							
2009-10	Sweetwater #1	Farson-Eden Middle School	07	American Indian/Alaska Native	Writing	1 - 5							
2009-10	Sweetwater #1	Farson-Eden Middle School	07	White	Writing	10 - 19	100.0%						
2009-10	Sweetwater #1	Farson-Eden Middle School	07	Female	Writing	1 - 5							
2009-10	Sweetwater #1	Farson-Eden Middle School	07	Male	Writing	10 - 19	100.0%						
2009-10	Sweetwater #1	Farson-Eden Middle School	07	English Language Learner	Writing	0							
2009-10	Sweetwater #1	Farson-Eden Middle School	07	Free/Reduced Lunch	Writing	1 - 5							
2009-10	Sweetwater #1	Farson-Eden Middle School	07	Individual Education Plan	Writing	1 - 5							
2009-10	Sweetwater #1	Farson-Eden Middle School	08	All Students	Math	10 - 19	100.0%	15.38%	46.15%	30.77%	7.69%	61.54%	38.46%
2009-10	Sweetwater #1	Farson-Eden Middle School	08	Asian/Pacific Islander	Math	0							
2009-10	Sweetwater #1	Farson-Eden Middle School	08	Black	Math	0							
2009-10	Sweetwater #1	Farson-Eden Middle School	08	Hispanic	Math	1 - 5							
2009-10	Sweetwater #1	Farson-Eden Middle School	08	American Indian/Alaska Native	Math	0							
2009-10	Sweetwater #1	Farson-Eden Middle School	08	White	Math	10 - 19	100.0%						
2009-10	Sweetwater #1	Farson-Eden Middle School	08	Female	Math	6 - 9	100.0%					>= 80%	<= 20%
2009-10	Sweetwater #1	Farson-Eden Middle School	08	Male	Math	6 - 9	100.0%	16.67%	16.67%	50.00%	16.67%	33.33%	66.67%
2009-10	Sweetwater #1	Farson-Eden Middle School	08	English Language Learner	Math	1 - 5							
2009-10	Sweetwater #1	Farson-Eden Middle School	08	Free/Reduced Lunch	Math	1 - 5							
2009-10	Sweetwater #1	Farson-Eden Middle School	08	Individual Education Plan	Math	1 - 5							
2009-10	Sweetwater #1	Farson-Eden Middle School	08	All Students	Reading	10 - 19	100.0%	0.00%	46.15%	46.15%	7.69%	46.15%	53.85%
2009-10	Sweetwater #1	Farson-Eden Middle School	08	Asian/Pacific Islander	Reading	0							

Public PAWS Results - School Level - Disaggregated

School Year	District Name	School Name	Grade	Subgroup	Subject	Number of Students Tested	Participation Rate	Percent Below Basic	Percent Basic	Percent Proficient	Percent Advanced	Percent Basic and Blow	Percent Proficient and Advanced
2009-10	Sweetwater #1	Farson-Eden Middle School	08	Black	Reading	0							
2009-10	Sweetwater #1	Farson-Eden Middle School	08	Hispanic	Reading	1 - 5							
2009-10	Sweetwater #1	Farson-Eden Middle School	08	American Indian/Alaska Native	Reading	0							
2009-10	Sweetwater #1	Farson-Eden Middle School	08	White	Reading	10 - 19	100.0%						
2009-10	Sweetwater #1	Farson-Eden Middle School	08	Female	Reading	6 - 9	100.0%	0.00%	57.14%	42.86%	0.00%	57.14%	42.86%
2009-10	Sweetwater #1	Farson-Eden Middle School	08	Male	Reading	6 - 9	100.0%	0.00%	33.33%	50.00%	16.67%	33.33%	66.67%
2009-10	Sweetwater #1	Farson-Eden Middle School	08	English Language Learner	Reading	1 - 5							
2009-10	Sweetwater #1	Farson-Eden Middle School	08	Free/Reduced Lunch	Reading	1 - 5							
2009-10	Sweetwater #1	Farson-Eden Middle School	08	Individual Education Plan	Reading	1 - 5							
2009-10	Sweetwater #1	Farson-Eden Middle School	08	All Students	Writing	10 - 19	100.0%					<= 10%	>= 90%
2009-10	Sweetwater #1	Farson-Eden Middle School	08	Asian/Pacific Islander	Writing	0							
2009-10	Sweetwater #1	Farson-Eden Middle School	08	Black	Writing	0							
2009-10	Sweetwater #1	Farson-Eden Middle School	08	Hispanic	Writing	1 - 5							
2009-10	Sweetwater #1	Farson-Eden Middle School	08	American Indian/Alaska Native	Writing	0							
2009-10	Sweetwater #1	Farson-Eden Middle School	08	White	Writing	10 - 19	100.0%						
2009-10	Sweetwater #1	Farson-Eden Middle School	08	Female	Writing	6 - 9	100.0%					<= 20%	>= 80%
2009-10	Sweetwater #1	Farson-Eden Middle School	08	Male	Writing	6 - 9	100.0%					<= 20%	>= 80%
2009-10	Sweetwater #1	Farson-Eden Middle School	08	English Language Learner	Writing	1 - 5							
2009-10	Sweetwater #1	Farson-Eden Middle School	08	Free/Reduced Lunch	Writing	1 - 5							
2009-10	Sweetwater #1	Farson-Eden Middle School	08	Individual Education Plan	Writing	1 - 5							
2009-10	Sweetwater #1	Farson-Eden Middle School	08	All Students	Science	10 - 19	100.0%	7.69%	61.54%	23.08%	7.69%	69.23%	30.77%
2009-10	Sweetwater #1	Farson-Eden Middle School	08	Asian/Pacific Islander	Science	0							

Public PAWS Results - School Level - Disaggregated

School Year	District Name	School Name	Grade	Subgroup	Subject	Number of Students Tested	Participation Rate	Percent Below Basic	Percent Basic	Percent Proficient	Percent Advanced	Percent Basic and Blow	Percent Proficient and Advanced
2009-10	Sweetwater #1	Farson-Eden Middle School	08	Black	Science	0							
2009-10	Sweetwater #1	Farson-Eden Middle School	08	Hispanic	Science	1 - 5							
2009-10	Sweetwater #1	Farson-Eden Middle School	08	American Indian/Alaska Native	Science	0							
2009-10	Sweetwater #1	Farson-Eden Middle School	08	White	Science	10 - 19	100.0%						
2009-10	Sweetwater #1	Farson-Eden Middle School	08	Female	Science	6 - 9	100.0%					>= 80%	<= 20%
2009-10	Sweetwater #1	Farson-Eden Middle School	08	Male	Science	6 - 9	100.0%	0.00%	50.00%	33.33%	16.67%	50.00%	50.00%
2009-10	Sweetwater #1	Farson-Eden Middle School	08	English Language Learner	Science	1 - 5							
2009-10	Sweetwater #1	Farson-Eden Middle School	08	Free/Reduced Lunch	Science	1 - 5							
2009-10	Sweetwater #1	Farson-Eden Middle School	08	Individual Education Plan	Science	1 - 5							
2009-10	Sweetwater #1	Independence High School	11	All Students	Math	10 - 19	83.3%	40.00%	40.00%	20.00%	0.00%	80.00%	20.00%
2009-10	Sweetwater #1	Independence High School	11	Asian/Pacific Islander	Math	0							
2009-10	Sweetwater #1	Independence High School	11	Black	Math	0							
2009-10	Sweetwater #1	Independence High School	11	Hispanic	Math	0							
2009-10	Sweetwater #1	Independence High School	11	American Indian/Alaska Native	Math	0							
2009-10	Sweetwater #1	Independence High School	11	White	Math	10 - 19	83.3%	40.00%	40.00%	20.00%	0.00%	80.00%	20.00%
2009-10	Sweetwater #1	Independence High School	11	Female	Math	6 - 9	87.5%						
2009-10	Sweetwater #1	Independence High School	11	Male	Math	1 - 5							
2009-10	Sweetwater #1	Independence High School	11	English Language Learner	Math	0							
2009-10	Sweetwater #1	Independence High School	11	Free/Reduced Lunch	Math	1 - 5							
2009-10	Sweetwater #1	Independence High School	11	Individual Education Plan	Math	1 - 5	83.3%						
2009-10	Sweetwater #1	Independence High School	11	All Students	Reading	10 - 19	83.3%	50.00%	10.00%	30.00%	10.00%	60.00%	40.00%
2009-10	Sweetwater #1	Independence High School	11	Asian/Pacific Islander	Reading	0							
2009-10	Sweetwater #1	Independence High School	11	Black	Reading	0							
2009-10	Sweetwater #1	Independence High School	11	Hispanic	Reading	0							
2009-10	Sweetwater #1	Independence High School	11	American Indian/Alaska Native	Reading	0							

Public PAWS Results - School Level - Disaggregated

School Year	District Name	School Name	Grade	Subgroup	Subject	Number of Students Tested	Participation Rate	Percent Below Basic	Percent Basic	Percent Proficient	Percent Advanced	Percent Basic and Blow	Percent Proficient and Advanced
2009-10	Sweetwater #1	Independence High School	11	White	Reading	10 - 19	83.3%	50.00%	10.00%	30.00%	10.00%	60.00%	40.00%
2009-10	Sweetwater #1	Independence High School	11	Female	Reading	6 - 9	87.5%						
2009-10	Sweetwater #1	Independence High School	11	Male	Reading	1 - 5							
2009-10	Sweetwater #1	Independence High School	11	English Language Learner	Reading	0							
2009-10	Sweetwater #1	Independence High School	11	Free/Reduced Lunch	Reading	1 - 5							
2009-10	Sweetwater #1	Independence High School	11	Individual Education Plan	Reading	1 - 5	83.3%						
2009-10	Sweetwater #1	Independence High School	11	All Students	Writing	10 - 19	83.3%	0.00%	50.00%	40.00%	10.00%	50.00%	50.00%
2009-10	Sweetwater #1	Independence High School	11	Asian/Pacific Islander	Writing	0							
2009-10	Sweetwater #1	Independence High School	11	Black	Writing	0							
2009-10	Sweetwater #1	Independence High School	11	Hispanic	Writing	0							
2009-10	Sweetwater #1	Independence High School	11	American Indian/Alaska Native	Writing	0							
2009-10	Sweetwater #1	Independence High School	11	White	Writing	10 - 19	83.3%	0.00%	50.00%	40.00%	10.00%	50.00%	50.00%
2009-10	Sweetwater #1	Independence High School	11	Female	Writing	6 - 9	87.5%						
2009-10	Sweetwater #1	Independence High School	11	Male	Writing	1 - 5							
2009-10	Sweetwater #1	Independence High School	11	English Language Learner	Writing	0							
2009-10	Sweetwater #1	Independence High School	11	Free/Reduced Lunch	Writing	1 - 5							
2009-10	Sweetwater #1	Independence High School	11	Individual Education Plan	Writing	1 - 5	83.3%						
2009-10	Sweetwater #1	Independence High School	11	All Students	Science	10 - 19	83.3%	50.00%	30.00%	20.00%	0.00%	80.00%	20.00%
2009-10	Sweetwater #1	Independence High School	11	Asian/Pacific Islander	Science	0							
2009-10	Sweetwater #1	Independence High School	11	Black	Science	0							
2009-10	Sweetwater #1	Independence High School	11	Hispanic	Science	0							
2009-10	Sweetwater #1	Independence High School	11	American Indian/Alaska Native	Science	0							
2009-10	Sweetwater #1	Independence High School	11	White	Science	10 - 19	83.3%	50.00%	30.00%	20.00%	0.00%	80.00%	20.00%
2009-10	Sweetwater #1	Independence High School	11	Female	Science	6 - 9	87.5%						
2009-10	Sweetwater #1	Independence High School	11	Male	Science	1 - 5							
2009-10	Sweetwater #1	Independence High School	11	English Language Learner	Science	0							
2009-10	Sweetwater #1	Independence High School	11	Free/Reduced Lunch	Science	1 - 5							
2009-10	Sweetwater #1	Independence High School	11	Individual Education Plan	Science	1 - 5	83.3%						

Public PAWS Results - School Level - Disaggregated

School Year	District Name	School Name	Grade	Subgroup	Subject	Number of Students Tested	Participation Rate	Percent Below Basic	Percent Basic	Percent Proficient	Percent Advanced	Percent Basic and Blow	Percent Proficient and Advanced
2009-10	Sweetwater #1	Lincoln Elementary	05	All Students	Math	120 - 129	100.0%	13.18%	24.81%	45.74%	16.28%	37.98%	62.02%
2009-10	Sweetwater #1	Lincoln Elementary	05	Asian/Pacific Islander	Math	1 - 5							
2009-10	Sweetwater #1	Lincoln Elementary	05	Black	Math	0							
2009-10	Sweetwater #1	Lincoln Elementary	05	Hispanic	Math	30 - 39	100.0%	25.00%	28.13%	37.50%	9.38%	53.13%	46.88%
2009-10	Sweetwater #1	Lincoln Elementary	05	American Indian/Alaska Native	Math	1 - 5							
2009-10	Sweetwater #1	Lincoln Elementary	05	White	Math	90 - 99	100.0%	9.57%	23.40%	48.94%	18.09%	32.98%	67.02%
2009-10	Sweetwater #1	Lincoln Elementary	05	Female	Math	50 - 59	100.0%	11.54%	23.08%	48.08%	17.31%	34.62%	65.38%
2009-10	Sweetwater #1	Lincoln Elementary	05	Male	Math	70 - 79	100.0%	14.29%	25.97%	44.16%	15.58%	40.26%	59.74%
2009-10	Sweetwater #1	Lincoln Elementary	05	English Language Learner	Math	6 - 9	100.0%					>= 80%	<= 20%
2009-10	Sweetwater #1	Lincoln Elementary	05	Free/Reduced Lunch	Math	40 - 49	100.0%	17.39%	28.26%	43.48%	10.87%	45.65%	54.35%
2009-10	Sweetwater #1	Lincoln Elementary	05	Individual Education Plan	Math	10 - 19	100.0%	33.33%	40.00%	26.67%	0.00%	73.33%	26.67%
2009-10	Sweetwater #1	Lincoln Elementary	05	All Students	Reading	120 - 129	100.0%	18.60%	34.11%	37.21%	10.08%	52.71%	47.29%
2009-10	Sweetwater #1	Lincoln Elementary	05	Asian/Pacific Islander	Reading	1 - 5							
2009-10	Sweetwater #1	Lincoln Elementary	05	Black	Reading	0							
2009-10	Sweetwater #1	Lincoln Elementary	05	Hispanic	Reading	30 - 39	100.0%	31.25%	37.50%	25.00%	6.25%	68.75%	31.25%
2009-10	Sweetwater #1	Lincoln Elementary	05	American Indian/Alaska Native	Reading	1 - 5							
2009-10	Sweetwater #1	Lincoln Elementary	05	White	Reading	90 - 99	100.0%	14.89%	31.91%	42.55%	10.64%	46.81%	53.19%
2009-10	Sweetwater #1	Lincoln Elementary	05	Female	Reading	50 - 59	100.0%	9.62%	34.62%	38.46%	17.31%	44.23%	55.77%
2009-10	Sweetwater #1	Lincoln Elementary	05	Male	Reading	70 - 79	100.0%	24.68%	33.77%	36.36%	5.19%	58.44%	41.56%
2009-10	Sweetwater #1	Lincoln Elementary	05	English Language Learner	Reading	6 - 9	100.0%					>= 80%	<= 20%
2009-10	Sweetwater #1	Lincoln Elementary	05	Free/Reduced Lunch	Reading	40 - 49	100.0%	28.26%	34.78%	34.78%	2.17%	63.04%	36.96%
2009-10	Sweetwater #1	Lincoln Elementary	05	Individual Education Plan	Reading	10 - 19	100.0%					>= 90%	<= 10%
2009-10	Sweetwater #1	Lincoln Elementary	05	All Students	Writing	120 - 129	100.0%	5.43%	22.48%	65.12%	6.98%	27.91%	72.09%
2009-10	Sweetwater #1	Lincoln Elementary	05	Asian/Pacific Islander	Writing	1 - 5							
2009-10	Sweetwater #1	Lincoln Elementary	05	Black	Writing	0							
2009-10	Sweetwater #1	Lincoln Elementary	05	Hispanic	Writing	30 - 39	100.0%	6.25%	37.50%	46.88%	9.38%	43.75%	56.25%

Public PAWS Results - School Level - Disaggregated

School Year	District Name	School Name	Grade	Subgroup	Subject	Number of Students Tested	Participation Rate	Percent Below Basic	Percent Basic	Percent Proficient	Percent Advanced	Percent Basic and Blow	Percent Proficient and Advanced
2009-10	Sweetwater #1	Lincoln Elementary	05	American Indian/Alaska Native	Writing	1 - 5							
2009-10	Sweetwater #1	Lincoln Elementary	05	White	Writing	90 - 99	100.0%	5.32%	15.96%	73.40%	5.32%	21.28%	78.72%
2009-10	Sweetwater #1	Lincoln Elementary	05	Female	Writing	50 - 59	100.0%	1.92%	7.69%	76.92%	13.46%	9.62%	90.38%
2009-10	Sweetwater #1	Lincoln Elementary	05	Male	Writing	70 - 79	100.0%	7.79%	32.47%	57.14%	2.60%	40.26%	59.74%
2009-10	Sweetwater #1	Lincoln Elementary	05	English Language Learner	Writing	6 - 9	100.0%	22.22%	33.33%	44.44%	0.00%	55.56%	44.44%
2009-10	Sweetwater #1	Lincoln Elementary	05	Free/Reduced Lunch	Writing	40 - 49	100.0%	6.52%	34.78%	56.52%	2.17%	41.30%	58.70%
2009-10	Sweetwater #1	Lincoln Elementary	05	Individual Education Plan	Writing	10 - 19	100.0%	13.33%	46.67%	40.00%	0.00%	60.00%	40.00%
2009-10	Sweetwater #1	Lincoln Elementary	06	All Students	Math	100 - 109	98.2%	16.67%	16.67%	54.63%	12.04%	33.33%	66.67%
2009-10	Sweetwater #1	Lincoln Elementary	06	Asian/Pacific Islander	Math	1 - 5							
2009-10	Sweetwater #1	Lincoln Elementary	06	Black	Math	1 - 5							
2009-10	Sweetwater #1	Lincoln Elementary	06	Hispanic	Math	20 - 29	100.0%	22.22%	14.81%	62.96%	0.00%	37.04%	62.96%
2009-10	Sweetwater #1	Lincoln Elementary	06	American Indian/Alaska Native	Math	1 - 5							
2009-10	Sweetwater #1	Lincoln Elementary	06	White	Math	70 - 79	97.3%	16.44%	15.07%	52.05%	16.44%	31.51%	68.49%
2009-10	Sweetwater #1	Lincoln Elementary	06	Female	Math	50 - 59	98.1%	19.61%	15.69%	56.86%	7.84%	35.29%	64.71%
2009-10	Sweetwater #1	Lincoln Elementary	06	Male	Math	50 - 59	98.3%	14.04%	17.54%	52.63%	15.79%	31.58%	68.42%
2009-10	Sweetwater #1	Lincoln Elementary	06	English Language Learner	Math	1 - 5							
2009-10	Sweetwater #1	Lincoln Elementary	06	Free/Reduced Lunch	Math	40 - 49	100.0%	32.56%	16.28%	48.84%	2.33%	48.84%	51.16%
2009-10	Sweetwater #1	Lincoln Elementary	06	Individual Education Plan	Math	10 - 19	100.0%	52.94%	11.76%	29.41%	5.88%	64.71%	35.29%
2009-10	Sweetwater #1	Lincoln Elementary	06	All Students	Reading	100 - 109	98.2%	15.74%	29.63%	43.52%	11.11%	45.37%	54.63%
2009-10	Sweetwater #1	Lincoln Elementary	06	Asian/Pacific Islander	Reading	1 - 5							
2009-10	Sweetwater #1	Lincoln Elementary	06	Black	Reading	1 - 5							
2009-10	Sweetwater #1	Lincoln Elementary	06	Hispanic	Reading	20 - 29	100.0%	14.81%	40.74%	40.74%	3.70%	55.56%	44.44%
2009-10	Sweetwater #1	Lincoln Elementary	06	American Indian/Alaska Native	Reading	1 - 5							
2009-10	Sweetwater #1	Lincoln Elementary	06	White	Reading	70 - 79	97.3%	15.07%	27.40%	43.84%	13.70%	42.47%	57.53%
2009-10	Sweetwater #1	Lincoln Elementary	06	Female	Reading	50 - 59	98.1%	13.73%	29.41%	41.18%	15.69%	43.14%	56.86%
2009-10	Sweetwater #1	Lincoln Elementary	06	Male	Reading	50 - 59	98.3%	17.54%	29.82%	45.61%	7.02%	47.37%	52.63%

Public PAWS Results - School Level - Disaggregated

School Year	District Name	School Name	Grade	Subgroup	Subject	Number of Students Tested	Participation Rate	Percent Below Basic	Percent Basic	Percent Proficient	Percent Advanced	Percent Basic and Blow	Percent Proficient and Advanced
2009-10	Sweetwater #1	Lincoln Elementary	06	English Language Learner	Reading	1 - 5							
2009-10	Sweetwater #1	Lincoln Elementary	06	Free/Reduced Lunch	Reading	40 - 49	100.0%	32.56%	30.23%	32.56%	4.65%	62.79%	37.21%
2009-10	Sweetwater #1	Lincoln Elementary	06	Individual Education Plan	Reading	10 - 19	100.0%	52.94%	29.41%	17.65%	0.00%	82.35%	17.65%
2009-10	Sweetwater #1	Lincoln Elementary	06	All Students	Writing	100 - 109	98.2%	5.56%	48.15%	33.33%	12.96%	53.70%	46.30%
2009-10	Sweetwater #1	Lincoln Elementary	06	Asian/Pacific Islander	Writing	1 - 5							
2009-10	Sweetwater #1	Lincoln Elementary	06	Black	Writing	1 - 5							
2009-10	Sweetwater #1	Lincoln Elementary	06	Hispanic	Writing	20 - 29	100.0%	7.41%	44.44%	33.33%	14.81%	51.85%	48.15%
2009-10	Sweetwater #1	Lincoln Elementary	06	American Indian/Alaska Native	Writing	1 - 5							
2009-10	Sweetwater #1	Lincoln Elementary	06	White	Writing	70 - 79	97.3%	5.48%	50.68%	30.14%	13.70%	56.16%	43.84%
2009-10	Sweetwater #1	Lincoln Elementary	06	Female	Writing	50 - 59	98.1%	5.88%	35.29%	35.29%	23.53%	41.18%	58.82%
2009-10	Sweetwater #1	Lincoln Elementary	06	Male	Writing	50 - 59	98.3%	5.26%	59.65%	31.58%	3.51%	64.91%	35.09%
2009-10	Sweetwater #1	Lincoln Elementary	06	English Language Learner	Writing	1 - 5							
2009-10	Sweetwater #1	Lincoln Elementary	06	Free/Reduced Lunch	Writing	40 - 49	100.0%	11.63%	48.84%	30.23%	9.30%	60.47%	39.53%
2009-10	Sweetwater #1	Lincoln Elementary	06	Individual Education Plan	Writing	10 - 19	100.0%					>= 90%	<= 10%
2009-10	Sweetwater #1	Northpark Elementary	03	All Students	Math	50 - 59	100.0%	1.69%	8.47%	49.15%	40.68%	10.17%	89.83%
2009-10	Sweetwater #1	Northpark Elementary	03	Asian/Pacific Islander	Math	0							
2009-10	Sweetwater #1	Northpark Elementary	03	Black	Math	1 - 5							
2009-10	Sweetwater #1	Northpark Elementary	03	Hispanic	Math	1 - 5							
2009-10	Sweetwater #1	Northpark Elementary	03	American Indian/Alaska Native	Math	0							
2009-10	Sweetwater #1	Northpark Elementary	03	White	Math	50 - 59	100.0%	0.00%	7.55%	49.06%	43.40%	7.55%	92.45%
2009-10	Sweetwater #1	Northpark Elementary	03	Female	Math	20 - 29	100.0%					<= 5%	>= 95%
2009-10	Sweetwater #1	Northpark Elementary	03	Male	Math	30 - 39	100.0%	2.94%	11.76%	41.18%	44.12%	14.71%	85.29%
2009-10	Sweetwater #1	Northpark Elementary	03	English Language Learner	Math	1 - 5							
2009-10	Sweetwater #1	Northpark Elementary	03	Free/Reduced Lunch	Math	10 - 19	100.0%	5.56%	16.67%	50.00%	27.78%	22.22%	77.78%
2009-10	Sweetwater #1	Northpark Elementary	03	Individual Education Plan	Math	10 - 19	100.0%	7.69%	15.38%	69.23%	7.69%	23.08%	76.92%
2009-10	Sweetwater #1	Northpark Elementary	03	All Students	Reading	50 - 59	98.3%	1.72%	32.76%	55.17%	10.34%	34.48%	65.52%

Public PAWS Results - School Level - Disaggregated

School Year	District Name	School Name	Grade	Subgroup	Subject	Number of Students Tested	Participation Rate	Percent Below Basic	Percent Basic	Percent Proficient	Percent Advanced	Percent Basic and Blow	Percent Proficient and Advanced
2009-10	Sweetwater #1	Northpark Elementary	03	Asian/Pacific Islander	Reading	0							
2009-10	Sweetwater #1	Northpark Elementary	03	Black	Reading	1 - 5							
2009-10	Sweetwater #1	Northpark Elementary	03	Hispanic	Reading	1 - 5							
2009-10	Sweetwater #1	Northpark Elementary	03	American Indian/Alaska Native	Reading	0							
2009-10	Sweetwater #1	Northpark Elementary	03	White	Reading	50 - 59	100.0%						
2009-10	Sweetwater #1	Northpark Elementary	03	Female	Reading	20 - 29	100.0%	0.00%	32.00%	56.00%	12.00%	32.00%	68.00%
2009-10	Sweetwater #1	Northpark Elementary	03	Male	Reading	30 - 39	97.1%	3.03%	33.33%	54.55%	9.09%	36.36%	63.64%
2009-10	Sweetwater #1	Northpark Elementary	03	English Language Learner	Reading	1 - 5							
2009-10	Sweetwater #1	Northpark Elementary	03	Free/Reduced Lunch	Reading	10 - 19	94.4%	5.88%	17.65%	64.71%	11.76%	23.53%	76.47%
2009-10	Sweetwater #1	Northpark Elementary	03	Individual Education Plan	Reading	10 - 19	92.3%	0.00%	66.67%	33.33%	0.00%	66.67%	33.33%
2009-10	Sweetwater #1	Northpark Elementary	03	All Students	Writing	50 - 59	98.3%	0.00%	8.62%	51.72%	39.66%	8.62%	91.38%
2009-10	Sweetwater #1	Northpark Elementary	03	Asian/Pacific Islander	Writing	0							
2009-10	Sweetwater #1	Northpark Elementary	03	Black	Writing	1 - 5							
2009-10	Sweetwater #1	Northpark Elementary	03	Hispanic	Writing	1 - 5							
2009-10	Sweetwater #1	Northpark Elementary	03	American Indian/Alaska Native	Writing	0							
2009-10	Sweetwater #1	Northpark Elementary	03	White	Writing	50 - 59	100.0%						
2009-10	Sweetwater #1	Northpark Elementary	03	Female	Writing	20 - 29	100.0%					<= 5%	>= 95%
2009-10	Sweetwater #1	Northpark Elementary	03	Male	Writing	30 - 39	97.1%	0.00%	15.15%	51.52%	33.33%	15.15%	84.85%
2009-10	Sweetwater #1	Northpark Elementary	03	English Language Learner	Writing	1 - 5							
2009-10	Sweetwater #1	Northpark Elementary	03	Free/Reduced Lunch	Writing	10 - 19	94.4%	0.00%	23.53%	52.94%	23.53%	23.53%	76.47%
2009-10	Sweetwater #1	Northpark Elementary	03	Individual Education Plan	Writing	10 - 19	92.3%	0.00%	41.67%	50.00%	8.33%	41.67%	58.33%
2009-10	Sweetwater #1	Northpark Elementary	04	All Students	Math	50 - 59	100.0%	7.02%	8.77%	57.89%	26.32%	15.79%	84.21%
2009-10	Sweetwater #1	Northpark Elementary	04	Asian/Pacific Islander	Math	0							
2009-10	Sweetwater #1	Northpark Elementary	04	Black	Math	0							
2009-10	Sweetwater #1	Northpark Elementary	04	Hispanic	Math	1 - 5							
2009-10	Sweetwater #1	Northpark Elementary	04	American Indian/Alaska Native	Math	1 - 5							
2009-10	Sweetwater #1	Northpark Elementary	04	White	Math	50 - 59	100.0%						

Public PAWS Results - School Level - Disaggregated

School Year	District Name	School Name	Grade	Subgroup	Subject	Number of Students Tested	Participation Rate	Percent Below Basic	Percent Basic	Percent Proficient	Percent Advanced	Percent Basic and Blow	Percent Proficient and Advanced
2009-10	Sweetwater #1	Northpark Elementary	04	Female	Math	30 - 39	100.0%	6.67%	6.67%	56.67%	30.00%	13.33%	86.67%
2009-10	Sweetwater #1	Northpark Elementary	04	Male	Math	20 - 29	100.0%	7.41%	11.11%	59.26%	22.22%	18.52%	81.48%
2009-10	Sweetwater #1	Northpark Elementary	04	English Language Learner	Math	0							
2009-10	Sweetwater #1	Northpark Elementary	04	Free/Reduced Lunch	Math	20 - 29	100.0%	6.90%	17.24%	58.62%	17.24%	24.14%	75.86%
2009-10	Sweetwater #1	Northpark Elementary	04	Individual Education Plan	Math	10 - 19	100.0%	7.14%	14.29%	64.29%	14.29%	21.43%	78.57%
2009-10	Sweetwater #1	Northpark Elementary	04	All Students	Reading	50 - 59	100.0%	1.75%	22.81%	66.67%	8.77%	24.56%	75.44%
2009-10	Sweetwater #1	Northpark Elementary	04	Asian/Pacific Islander	Reading	0							
2009-10	Sweetwater #1	Northpark Elementary	04	Black	Reading	0							
2009-10	Sweetwater #1	Northpark Elementary	04	Hispanic	Reading	1 - 5							
2009-10	Sweetwater #1	Northpark Elementary	04	American Indian/Alaska Native	Reading	1 - 5							
2009-10	Sweetwater #1	Northpark Elementary	04	White	Reading	50 - 59	100.0%						
2009-10	Sweetwater #1	Northpark Elementary	04	Female	Reading	30 - 39	100.0%	3.33%	26.67%	63.33%	6.67%	30.00%	70.00%
2009-10	Sweetwater #1	Northpark Elementary	04	Male	Reading	20 - 29	100.0%	0.00%	18.52%	70.37%	11.11%	18.52%	81.48%
2009-10	Sweetwater #1	Northpark Elementary	04	English Language Learner	Reading	0							
2009-10	Sweetwater #1	Northpark Elementary	04	Free/Reduced Lunch	Reading	20 - 29	100.0%	0.00%	34.48%	62.07%	3.45%	34.48%	65.52%
2009-10	Sweetwater #1	Northpark Elementary	04	Individual Education Plan	Reading	10 - 19	100.0%	7.14%	21.43%	71.43%	0.00%	28.57%	71.43%
2009-10	Sweetwater #1	Northpark Elementary	04	All Students	Writing	50 - 59	100.0%	0.00%	14.04%	63.16%	22.81%	14.04%	85.96%
2009-10	Sweetwater #1	Northpark Elementary	04	Asian/Pacific Islander	Writing	0							
2009-10	Sweetwater #1	Northpark Elementary	04	Black	Writing	0							
2009-10	Sweetwater #1	Northpark Elementary	04	Hispanic	Writing	1 - 5							
2009-10	Sweetwater #1	Northpark Elementary	04	American Indian/Alaska Native	Writing	1 - 5							
2009-10	Sweetwater #1	Northpark Elementary	04	White	Writing	50 - 59	100.0%						
2009-10	Sweetwater #1	Northpark Elementary	04	Female	Writing	30 - 39	100.0%	0.00%	13.33%	53.33%	33.33%	13.33%	86.67%
2009-10	Sweetwater #1	Northpark Elementary	04	Male	Writing	20 - 29	100.0%	0.00%	14.81%	74.07%	11.11%	14.81%	85.19%
2009-10	Sweetwater #1	Northpark Elementary	04	English Language Learner	Writing	0							
2009-10	Sweetwater #1	Northpark Elementary	04	Free/Reduced Lunch	Writing	20 - 29	100.0%	0.00%	13.79%	68.97%	17.24%	13.79%	86.21%
2009-10	Sweetwater #1	Northpark Elementary	04	Individual Education Plan	Writing	10 - 19	100.0%	0.00%	35.71%	64.29%	0.00%	35.71%	64.29%
2009-10	Sweetwater #1	Northpark Elementary	04	All Students	Science	50 - 59	100.0%	19.30%	31.58%	45.61%	3.51%	50.88%	49.12%

Public PAWS Results - School Level - Disaggregated

School Year	District Name	School Name	Grade	Subgroup	Subject	Number of Students Tested	Participation Rate	Percent Below Basic	Percent Basic	Percent Proficient	Percent Advanced	Percent Basic and Blow	Percent Proficient and Advanced
2009-10	Sweetwater #1	Northpark Elementary	04	Asian/Pacific Islander	Science	0							
2009-10	Sweetwater #1	Northpark Elementary	04	Black	Science	0							
2009-10	Sweetwater #1	Northpark Elementary	04	Hispanic	Science	1 - 5							
2009-10	Sweetwater #1	Northpark Elementary	04	American Indian/Alaska Native	Science	1 - 5							
2009-10	Sweetwater #1	Northpark Elementary	04	White	Science	50 - 59	100.0%						
2009-10	Sweetwater #1	Northpark Elementary	04	Female	Science	30 - 39	100.0%	23.33%	40.00%	36.67%	0.00%	63.33%	36.67%
2009-10	Sweetwater #1	Northpark Elementary	04	Male	Science	20 - 29	100.0%	14.81%	22.22%	55.56%	7.41%	37.04%	62.96%
2009-10	Sweetwater #1	Northpark Elementary	04	English Language Learner	Science	0							
2009-10	Sweetwater #1	Northpark Elementary	04	Free/Reduced Lunch	Science	20 - 29	100.0%	34.48%	24.14%	41.38%	0.00%	58.62%	41.38%
2009-10	Sweetwater #1	Northpark Elementary	04	Individual Education Plan	Science	10 - 19	100.0%	14.29%	35.71%	50.00%	0.00%	50.00%	50.00%
2009-10	Sweetwater #1	Overland Elementary	03	All Students	Math	50 - 59	98.1%	9.80%	25.49%	49.02%	15.69%	35.29%	64.71%
2009-10	Sweetwater #1	Overland Elementary	03	Asian/Pacific Islander	Math	1 - 5							
2009-10	Sweetwater #1	Overland Elementary	03	Black	Math	0							
2009-10	Sweetwater #1	Overland Elementary	03	Hispanic	Math	20 - 29	96.2%	12.00%	16.00%	52.00%	20.00%	28.00%	72.00%
2009-10	Sweetwater #1	Overland Elementary	03	American Indian/Alaska Native	Math	0							
2009-10	Sweetwater #1	Overland Elementary	03	White	Math	20 - 29	100.0%	8.33%	33.33%	45.83%	12.50%	41.67%	58.33%
2009-10	Sweetwater #1	Overland Elementary	03	Female	Math	20 - 29	96.3%	11.54%	23.08%	46.15%	19.23%	34.62%	65.38%
2009-10	Sweetwater #1	Overland Elementary	03	Male	Math	20 - 29	100.0%	8.00%	28.00%	52.00%	12.00%	36.00%	64.00%
2009-10	Sweetwater #1	Overland Elementary	03	English Language Learner	Math	1 - 5							
2009-10	Sweetwater #1	Overland Elementary	03	Free/Reduced Lunch	Math	20 - 29	100.0%	6.90%	20.69%	58.62%	13.79%	27.59%	72.41%
2009-10	Sweetwater #1	Overland Elementary	03	Individual Education Plan	Math	6 - 9	100.0%	33.33%	22.22%	33.33%	11.11%	55.56%	44.44%
2009-10	Sweetwater #1	Overland Elementary	03	All Students	Reading	50 - 59	98.1%	19.61%	49.02%	31.37%	0.00%	68.63%	31.37%
2009-10	Sweetwater #1	Overland Elementary	03	Asian/Pacific Islander	Reading	1 - 5							
2009-10	Sweetwater #1	Overland Elementary	03	Black	Reading	0							
2009-10	Sweetwater #1	Overland Elementary	03	Hispanic	Reading	20 - 29	96.2%	20.00%	52.00%	28.00%	0.00%	72.00%	28.00%
2009-10	Sweetwater #1	Overland Elementary	03	American Indian/Alaska Native	Reading	0							
2009-10	Sweetwater #1	Overland Elementary	03	White	Reading	20 - 29	100.0%	20.83%	45.83%	33.33%	0.00%	66.67%	33.33%

Public PAWS Results - School Level - Disaggregated

School Year	District Name	School Name	Grade	Subgroup	Subject	Number of Students Tested	Participation Rate	Percent Below Basic	Percent Basic	Percent Proficient	Percent Advanced	Percent Basic and Blow	Percent Proficient and Advanced
2009-10	Sweetwater #1	Overland Elementary	03	Female	Reading	20 - 29	96.3%	15.38%	50.00%	34.62%	0.00%	65.38%	34.62%
2009-10	Sweetwater #1	Overland Elementary	03	Male	Reading	20 - 29	100.0%	24.00%	48.00%	28.00%	0.00%	72.00%	28.00%
2009-10	Sweetwater #1	Overland Elementary	03	English Language Learner	Reading	1 - 5							
2009-10	Sweetwater #1	Overland Elementary	03	Free/Reduced Lunch	Reading	20 - 29	100.0%	13.79%	48.28%	37.93%	0.00%	62.07%	37.93%
2009-10	Sweetwater #1	Overland Elementary	03	Individual Education Plan	Reading	6 - 9	100.0%					>= 80%	<= 20%
2009-10	Sweetwater #1	Overland Elementary	03	All Students	Writing	50 - 59	98.1%	9.80%	17.65%	62.75%	9.80%	27.45%	72.55%
2009-10	Sweetwater #1	Overland Elementary	03	Asian/Pacific Islander	Writing	1 - 5							
2009-10	Sweetwater #1	Overland Elementary	03	Black	Writing	0							
2009-10	Sweetwater #1	Overland Elementary	03	Hispanic	Writing	20 - 29	96.2%	12.00%	16.00%	64.00%	8.00%	28.00%	72.00%
2009-10	Sweetwater #1	Overland Elementary	03	American Indian/Alaska Native	Writing	0							
2009-10	Sweetwater #1	Overland Elementary	03	White	Writing	20 - 29	100.0%	8.33%	16.67%	66.67%	8.33%	25.00%	75.00%
2009-10	Sweetwater #1	Overland Elementary	03	Female	Writing	20 - 29	96.3%	7.69%	23.08%	53.85%	15.38%	30.77%	69.23%
2009-10	Sweetwater #1	Overland Elementary	03	Male	Writing	20 - 29	100.0%	12.00%	12.00%	72.00%	4.00%	24.00%	76.00%
2009-10	Sweetwater #1	Overland Elementary	03	English Language Learner	Writing	1 - 5							
2009-10	Sweetwater #1	Overland Elementary	03	Free/Reduced Lunch	Writing	20 - 29	100.0%	10.34%	17.24%	65.52%	6.90%	27.59%	72.41%
2009-10	Sweetwater #1	Overland Elementary	03	Individual Education Plan	Writing	6 - 9	100.0%	22.22%	22.22%	55.56%	0.00%	44.44%	55.56%
2009-10	Sweetwater #1	Overland Elementary	04	All Students	Math	50 - 59	100.0%	13.21%	13.21%	50.94%	22.64%	26.42%	73.58%
2009-10	Sweetwater #1	Overland Elementary	04	Asian/Pacific Islander	Math	0							
2009-10	Sweetwater #1	Overland Elementary	04	Black	Math	0							
2009-10	Sweetwater #1	Overland Elementary	04	Hispanic	Math	20 - 29	100.0%	23.81%	9.52%	52.38%	14.29%	33.33%	66.67%
2009-10	Sweetwater #1	Overland Elementary	04	American Indian/Alaska Native	Math	0							
2009-10	Sweetwater #1	Overland Elementary	04	White	Math	30 - 39	100.0%	6.25%	15.63%	50.00%	28.13%	21.88%	78.13%
2009-10	Sweetwater #1	Overland Elementary	04	Female	Math	20 - 29	100.0%	16.00%	16.00%	52.00%	16.00%	32.00%	68.00%
2009-10	Sweetwater #1	Overland Elementary	04	Male	Math	20 - 29	100.0%	10.71%	10.71%	50.00%	28.57%	21.43%	78.57%
2009-10	Sweetwater #1	Overland Elementary	04	English Language Learner	Math	6 - 9	100.0%	44.44%	22.22%	33.33%	0.00%	66.67%	33.33%
2009-10	Sweetwater #1	Overland Elementary	04	Free/Reduced Lunch	Math	30 - 39	100.0%	20.00%	23.33%	43.33%	13.33%	43.33%	56.67%
2009-10	Sweetwater #1	Overland Elementary	04	Individual Education Plan	Math	6 - 9	100.0%					>= 80%	<= 20%
2009-10	Sweetwater #1	Overland Elementary	04	All Students	Reading	50 - 59	100.0%	5.66%	30.19%	45.28%	18.87%	35.85%	64.15%

Public PAWS Results - School Level - Disaggregated

School Year	District Name	School Name	Grade	Subgroup	Subject	Number of Students Tested	Participation Rate	Percent Below Basic	Percent Basic	Percent Proficient	Percent Advanced	Percent Basic and Blow	Percent Proficient and Advanced
2009-10	Sweetwater #1	Overland Elementary	04	Asian/Pacific Islander	Reading	0							
2009-10	Sweetwater #1	Overland Elementary	04	Black	Reading	0							
2009-10	Sweetwater #1	Overland Elementary	04	Hispanic	Reading	20 - 29	100.0%	4.76%	47.62%	33.33%	14.29%	52.38%	47.62%
2009-10	Sweetwater #1	Overland Elementary	04	American Indian/Alaska Native	Reading	0							
2009-10	Sweetwater #1	Overland Elementary	04	White	Reading	30 - 39	100.0%	6.25%	18.75%	53.13%	21.88%	25.00%	75.00%
2009-10	Sweetwater #1	Overland Elementary	04	Female	Reading	20 - 29	100.0%	12.00%	36.00%	36.00%	16.00%	48.00%	52.00%
2009-10	Sweetwater #1	Overland Elementary	04	Male	Reading	20 - 29	100.0%	0.00%	25.00%	53.57%	21.43%	25.00%	75.00%
2009-10	Sweetwater #1	Overland Elementary	04	English Language Learner	Reading	6 - 9	100.0%	11.11%	66.67%	22.22%	0.00%	77.78%	22.22%
2009-10	Sweetwater #1	Overland Elementary	04	Free/Reduced Lunch	Reading	30 - 39	100.0%	6.67%	40.00%	40.00%	13.33%	46.67%	53.33%
2009-10	Sweetwater #1	Overland Elementary	04	Individual Education Plan	Reading	6 - 9	100.0%					>= 80%	<= 20%
2009-10	Sweetwater #1	Overland Elementary	04	All Students	Writing	50 - 59	100.0%	3.77%	18.87%	60.38%	16.98%	22.64%	77.36%
2009-10	Sweetwater #1	Overland Elementary	04	Asian/Pacific Islander	Writing	0							
2009-10	Sweetwater #1	Overland Elementary	04	Black	Writing	0							
2009-10	Sweetwater #1	Overland Elementary	04	Hispanic	Writing	20 - 29	100.0%	9.52%	23.81%	57.14%	9.52%	33.33%	66.67%
2009-10	Sweetwater #1	Overland Elementary	04	American Indian/Alaska Native	Writing	0							
2009-10	Sweetwater #1	Overland Elementary	04	White	Writing	30 - 39	100.0%	0.00%	15.63%	62.50%	21.88%	15.63%	84.38%
2009-10	Sweetwater #1	Overland Elementary	04	Female	Writing	20 - 29	100.0%	4.00%	28.00%	48.00%	20.00%	32.00%	68.00%
2009-10	Sweetwater #1	Overland Elementary	04	Male	Writing	20 - 29	100.0%	3.57%	10.71%	71.43%	14.29%	14.29%	85.71%
2009-10	Sweetwater #1	Overland Elementary	04	English Language Learner	Writing	6 - 9	100.0%	22.22%	33.33%	44.44%	0.00%	55.56%	44.44%
2009-10	Sweetwater #1	Overland Elementary	04	Free/Reduced Lunch	Writing	30 - 39	100.0%	6.67%	26.67%	60.00%	6.67%	33.33%	66.67%
2009-10	Sweetwater #1	Overland Elementary	04	Individual Education Plan	Writing	6 - 9	100.0%					>= 80%	<= 20%
2009-10	Sweetwater #1	Overland Elementary	04	All Students	Science	50 - 59	100.0%	15.09%	45.28%	35.85%	3.77%	60.38%	39.62%
2009-10	Sweetwater #1	Overland Elementary	04	Asian/Pacific Islander	Science	0							
2009-10	Sweetwater #1	Overland Elementary	04	Black	Science	0							
2009-10	Sweetwater #1	Overland Elementary	04	Hispanic	Science	20 - 29	100.0%	14.29%	57.14%	28.57%	0.00%	71.43%	28.57%
2009-10	Sweetwater #1	Overland Elementary	04	American Indian/Alaska Native	Science	0							
2009-10	Sweetwater #1	Overland Elementary	04	White	Science	30 - 39	100.0%	15.63%	37.50%	40.63%	6.25%	53.13%	46.88%

Public PAWS Results - School Level - Disaggregated

School Year	District Name	School Name	Grade	Subgroup	Subject	Number of Students Tested	Participation Rate	Percent Below Basic	Percent Basic	Percent Proficient	Percent Advanced	Percent Basic and Blow	Percent Proficient and Advanced
2009-10	Sweetwater #1	Overland Elementary	04	Female	Science	20 - 29	100.0%	24.00%	48.00%	24.00%	4.00%	72.00%	28.00%
2009-10	Sweetwater #1	Overland Elementary	04	Male	Science	20 - 29	100.0%	7.14%	42.86%	46.43%	3.57%	50.00%	50.00%
2009-10	Sweetwater #1	Overland Elementary	04	English Language Learner	Science	6 - 9	100.0%					>= 80%	<= 20%
2009-10	Sweetwater #1	Overland Elementary	04	Free/Reduced Lunch	Science	30 - 39	100.0%	16.67%	56.67%	26.67%	0.00%	73.33%	26.67%
2009-10	Sweetwater #1	Overland Elementary	04	Individual Education Plan	Science	6 - 9	100.0%					>= 80%	<= 20%
2009-10	Sweetwater #1	Rock Springs East Junior High	07	All Students	Math	350 - 359	99.7%	24.79%	27.58%	35.10%	12.53%	52.37%	47.63%
2009-10	Sweetwater #1	Rock Springs East Junior High	07	Asian/Pacific Islander	Math	1 - 5							
2009-10	Sweetwater #1	Rock Springs East Junior High	07	Black	Math	10 - 19	100.0%	30.00%	30.00%	40.00%	0.00%	60.00%	40.00%
2009-10	Sweetwater #1	Rock Springs East Junior High	07	Hispanic	Math	60 - 69	100.0%	42.42%	24.24%	27.27%	6.06%	66.67%	33.33%
2009-10	Sweetwater #1	Rock Springs East Junior High	07	American Indian/Alaska Native	Math	6 - 9	100.0%					>= 80%	<= 20%
2009-10	Sweetwater #1	Rock Springs East Junior High	07	White	Math	270 - 279	99.6%	20.22%	28.68%	37.50%	13.60%	48.90%	51.10%
2009-10	Sweetwater #1	Rock Springs East Junior High	07	Female	Math	170 - 179	100.0%	22.73%	32.39%	31.25%	13.64%	55.11%	44.89%
2009-10	Sweetwater #1	Rock Springs East Junior High	07	Male	Math	180 - 189	99.5%	26.78%	22.95%	38.80%	11.48%	49.73%	50.27%
2009-10	Sweetwater #1	Rock Springs East Junior High	07	English Language Learner	Math	10 - 19	100.0%	55.56%	27.78%	16.67%	0.00%	83.33%	16.67%
2009-10	Sweetwater #1	Rock Springs East Junior High	07	Free/Reduced Lunch	Math	140 - 149	100.0%	41.84%	23.40%	28.37%	6.38%	65.25%	34.75%
2009-10	Sweetwater #1	Rock Springs East Junior High	07	Individual Education Plan	Math	40 - 49	97.8%	66.67%	20.00%	13.33%	0.00%	86.67%	13.33%
2009-10	Sweetwater #1	Rock Springs East Junior High	07	All Students	Reading	350 - 359	99.7%	16.99%	45.13%	35.93%	1.95%	62.12%	37.88%
2009-10	Sweetwater #1	Rock Springs East Junior High	07	Asian/Pacific Islander	Reading	1 - 5							
2009-10	Sweetwater #1	Rock Springs East Junior High	07	Black	Reading	10 - 19	100.0%	10.00%	70.00%	20.00%	0.00%	80.00%	20.00%
2009-10	Sweetwater #1	Rock Springs East Junior High	07	Hispanic	Reading	60 - 69	100.0%	30.30%	42.42%	27.27%	0.00%	72.73%	27.27%
2009-10	Sweetwater #1	Rock Springs East Junior High	07	American Indian/Alaska Native	Reading	6 - 9	100.0%					>= 80%	<= 20%
2009-10	Sweetwater #1	Rock Springs East Junior High	07	White	Reading	270 - 279	99.6%	12.50%	46.69%	38.60%	2.21%	59.19%	40.81%
2009-10	Sweetwater #1	Rock Springs East Junior High	07	Female	Reading	170 - 179	100.0%	14.77%	44.89%	36.93%	3.41%	59.66%	40.34%

Public PAWS Results - School Level - Disaggregated

School Year	District Name	School Name	Grade	Subgroup	Subject	Number of Students Tested	Participation Rate	Percent Below Basic	Percent Basic	Percent Proficient	Percent Advanced	Percent Basic and Blow	Percent Proficient and Advanced
2009-10	Sweetwater #1	Rock Springs East Junior High	07	Male	Reading	180 - 189	99.5%	19.13%	45.36%	34.97%	0.55%	64.48%	35.52%
2009-10	Sweetwater #1	Rock Springs East Junior High	07	English Language Learner	Reading	10 - 19	100.0%	66.67%	22.22%	11.11%	0.00%	88.89%	11.11%
2009-10	Sweetwater #1	Rock Springs East Junior High	07	Free/Reduced Lunch	Reading	140 - 149	100.0%	29.79%	42.55%	26.24%	1.42%	72.34%	27.66%
2009-10	Sweetwater #1	Rock Springs East Junior High	07	Individual Education Plan	Reading	40 - 49	97.8%					>= 95%	<= 5%
2009-10	Sweetwater #1	Rock Springs East Junior High	07	All Students	Writing	350 - 359	99.7%	2.51%	31.75%	47.35%	18.38%	34.26%	65.74%
2009-10	Sweetwater #1	Rock Springs East Junior High	07	Asian/Pacific Islander	Writing	1 - 5							
2009-10	Sweetwater #1	Rock Springs East Junior High	07	Black	Writing	10 - 19	100.0%	0.00%	20.00%	70.00%	10.00%	20.00%	80.00%
2009-10	Sweetwater #1	Rock Springs East Junior High	07	Hispanic	Writing	60 - 69	100.0%	6.06%	36.36%	46.97%	10.61%	42.42%	57.58%
2009-10	Sweetwater #1	Rock Springs East Junior High	07	American Indian/Alaska Native	Writing	6 - 9	100.0%	16.67%	33.33%	50.00%	0.00%	50.00%	50.00%
2009-10	Sweetwater #1	Rock Springs East Junior High	07	White	Writing	270 - 279	99.6%	1.47%	31.25%	46.69%	20.59%	32.72%	67.28%
2009-10	Sweetwater #1	Rock Springs East Junior High	07	Female	Writing	170 - 179	100.0%	0.57%	22.16%	51.70%	25.57%	22.73%	77.27%
2009-10	Sweetwater #1	Rock Springs East Junior High	07	Male	Writing	180 - 189	99.5%	4.37%	40.98%	43.17%	11.48%	45.36%	54.64%
2009-10	Sweetwater #1	Rock Springs East Junior High	07	English Language Learner	Writing	10 - 19	100.0%	22.22%	44.44%	33.33%	0.00%	66.67%	33.33%
2009-10	Sweetwater #1	Rock Springs East Junior High	07	Free/Reduced Lunch	Writing	140 - 149	100.0%	2.84%	48.23%	39.72%	9.22%	51.06%	48.94%
2009-10	Sweetwater #1	Rock Springs East Junior High	07	Individual Education Plan	Writing	40 - 49	97.8%	8.89%	66.67%	24.44%	0.00%	75.56%	24.44%
2009-10	Sweetwater #1	Rock Springs East Junior High	08	All Students	Math	320 - 329	99.7%	19.44%	20.06%	47.22%	13.27%	39.51%	60.49%
2009-10	Sweetwater #1	Rock Springs East Junior High	08	Asian/Pacific Islander	Math	1 - 5							
2009-10	Sweetwater #1	Rock Springs East Junior High	08	Black	Math	10 - 19	100.0%	18.18%	36.36%	45.45%	0.00%	54.55%	45.45%
2009-10	Sweetwater #1	Rock Springs East Junior High	08	Hispanic	Math	60 - 69	100.0%	17.46%	28.57%	47.62%	6.35%	46.03%	53.97%
2009-10	Sweetwater #1	Rock Springs East Junior High	08	American Indian/Alaska Native	Math	1 - 5							
2009-10	Sweetwater #1	Rock Springs East Junior High	08	White	Math	240 - 249	99.6%	19.83%	16.94%	47.52%	15.70%	36.78%	63.22%
2009-10	Sweetwater #1	Rock Springs East Junior High	08	Female	Math	150 - 159	99.4%	20.65%	19.35%	46.45%	13.55%	40.00%	60.00%

Public PAWS Results - School Level - Disaggregated

School Year	District Name	School Name	Grade	Subgroup	Subject	Number of Students Tested	Participation Rate	Percent Below Basic	Percent Basic	Percent Proficient	Percent Advanced	Percent Basic and Blow	Percent Proficient and Advanced
2009-10	Sweetwater #1	Rock Springs East Junior High	08	Male	Math	160 - 169	100.0%	18.34%	20.71%	47.93%	13.02%	39.05%	60.95%
2009-10	Sweetwater #1	Rock Springs East Junior High	08	English Language Learner	Math	6 - 9	100.0%	25.00%	50.00%	25.00%	0.00%	75.00%	25.00%
2009-10	Sweetwater #1	Rock Springs East Junior High	08	Free/Reduced Lunch	Math	120 - 129	100.0%	26.98%	23.02%	42.06%	7.94%	50.00%	50.00%
2009-10	Sweetwater #1	Rock Springs East Junior High	08	Individual Education Plan	Math	30 - 39	100.0%	69.23%	10.26%	12.82%	7.69%	79.49%	20.51%
2009-10	Sweetwater #1	Rock Springs East Junior High	08	All Students	Reading	320 - 329	99.7%	11.42%	28.70%	47.84%	12.04%	40.12%	59.88%
2009-10	Sweetwater #1	Rock Springs East Junior High	08	Asian/Pacific Islander	Reading	1 - 5							
2009-10	Sweetwater #1	Rock Springs East Junior High	08	Black	Reading	10 - 19	100.0%	9.09%	27.27%	63.64%	0.00%	36.36%	63.64%
2009-10	Sweetwater #1	Rock Springs East Junior High	08	Hispanic	Reading	60 - 69	100.0%	14.29%	39.68%	39.68%	6.35%	53.97%	46.03%
2009-10	Sweetwater #1	Rock Springs East Junior High	08	American Indian/Alaska Native	Reading	1 - 5							
2009-10	Sweetwater #1	Rock Springs East Junior High	08	White	Reading	240 - 249	99.6%	10.74%	25.62%	49.59%	14.05%	36.36%	63.64%
2009-10	Sweetwater #1	Rock Springs East Junior High	08	Female	Reading	150 - 159	99.4%	11.61%	25.16%	46.45%	16.77%	36.77%	63.23%
2009-10	Sweetwater #1	Rock Springs East Junior High	08	Male	Reading	160 - 169	100.0%	11.24%	31.95%	49.11%	7.69%	43.20%	56.80%
2009-10	Sweetwater #1	Rock Springs East Junior High	08	English Language Learner	Reading	6 - 9	100.0%	50.00%	25.00%	25.00%	0.00%	75.00%	25.00%
2009-10	Sweetwater #1	Rock Springs East Junior High	08	Free/Reduced Lunch	Reading	120 - 129	100.0%	16.67%	30.16%	47.62%	5.56%	46.83%	53.17%
2009-10	Sweetwater #1	Rock Springs East Junior High	08	Individual Education Plan	Reading	30 - 39	100.0%	38.46%	41.03%	20.51%	0.00%	79.49%	20.51%
2009-10	Sweetwater #1	Rock Springs East Junior High	08	All Students	Writing	320 - 329	99.1%	1.55%	13.98%	68.63%	15.84%	15.53%	84.47%
2009-10	Sweetwater #1	Rock Springs East Junior High	08	Asian/Pacific Islander	Writing	1 - 5							
2009-10	Sweetwater #1	Rock Springs East Junior High	08	Black	Writing	10 - 19	100.0%					<= 10%	>= 90%
2009-10	Sweetwater #1	Rock Springs East Junior High	08	Hispanic	Writing	60 - 69	98.4%	3.23%	16.13%	66.13%	14.52%	19.35%	80.65%
2009-10	Sweetwater #1	Rock Springs East Junior High	08	American Indian/Alaska Native	Writing	1 - 5							
2009-10	Sweetwater #1	Rock Springs East Junior High	08	White	Writing	240 - 249	99.2%	1.24%	13.69%	69.29%	15.77%	14.94%	85.06%
2009-10	Sweetwater #1	Rock Springs East Junior High	08	Female	Writing	150 - 159	98.1%	0.65%	6.54%	69.28%	23.53%	7.19%	92.81%

Public PAWS Results - School Level - Disaggregated

School Year	District Name	School Name	Grade	Subgroup	Subject	Number of Students Tested	Participation Rate	Percent Below Basic	Percent Basic	Percent Proficient	Percent Advanced	Percent Basic and Blow	Percent Proficient and Advanced
2009-10	Sweetwater #1	Rock Springs East Junior High	08	Male	Writing	160 - 169	100.0%	2.37%	20.71%	68.05%	8.88%	23.08%	76.92%
2009-10	Sweetwater #1	Rock Springs East Junior High	08	English Language Learner	Writing	6 - 9	100.0%	0.00%	25.00%	75.00%	0.00%	25.00%	75.00%
2009-10	Sweetwater #1	Rock Springs East Junior High	08	Free/Reduced Lunch	Writing	120 - 129	99.2%	1.60%	15.20%	69.60%	13.60%	16.80%	83.20%
2009-10	Sweetwater #1	Rock Springs East Junior High	08	Individual Education Plan	Writing	30 - 39	100.0%	12.82%	41.03%	46.15%	0.00%	53.85%	46.15%
2009-10	Sweetwater #1	Rock Springs East Junior High	08	All Students	Science	320 - 329	99.7%	29.63%	43.52%	25.31%	1.54%	73.15%	26.85%
2009-10	Sweetwater #1	Rock Springs East Junior High	08	Asian/Pacific Islander	Science	1 - 5							
2009-10	Sweetwater #1	Rock Springs East Junior High	08	Black	Science	10 - 19	100.0%					>= 90%	<= 10%
2009-10	Sweetwater #1	Rock Springs East Junior High	08	Hispanic	Science	60 - 69	100.0%	38.10%	39.68%	22.22%	0.00%	77.78%	22.22%
2009-10	Sweetwater #1	Rock Springs East Junior High	08	American Indian/Alaska Native	Science	1 - 5							
2009-10	Sweetwater #1	Rock Springs East Junior High	08	White	Science	240 - 249	99.6%	26.45%	44.21%	27.69%	1.65%	70.66%	29.34%
2009-10	Sweetwater #1	Rock Springs East Junior High	08	Female	Science	150 - 159	99.4%	28.39%	41.94%	27.10%	2.58%	70.32%	29.68%
2009-10	Sweetwater #1	Rock Springs East Junior High	08	Male	Science	160 - 169	100.0%	30.77%	44.97%	23.67%	0.59%	75.74%	24.26%
2009-10	Sweetwater #1	Rock Springs East Junior High	08	English Language Learner	Science	6 - 9	100.0%					>= 80%	<= 20%
2009-10	Sweetwater #1	Rock Springs East Junior High	08	Free/Reduced Lunch	Science	120 - 129	100.0%	38.10%	42.06%	18.25%	1.59%	80.16%	19.84%
2009-10	Sweetwater #1	Rock Springs East Junior High	08	Individual Education Plan	Science	30 - 39	100.0%	58.97%	28.21%	10.26%	2.56%	87.18%	12.82%
2009-10	Sweetwater #1	Rock Springs High School	11	All Students	Math	230 - 239	98.7%	10.17%	28.39%	44.49%	16.95%	38.56%	61.44%
2009-10	Sweetwater #1	Rock Springs High School	11	Asian/Pacific Islander	Math	6 - 9	100.0%					<= 20%	>= 80%
2009-10	Sweetwater #1	Rock Springs High School	11	Black	Math	6 - 9	100.0%					>= 80%	<= 20%
2009-10	Sweetwater #1	Rock Springs High School	11	Hispanic	Math	30 - 39	100.0%	18.18%	27.27%	48.48%	6.06%	45.45%	54.55%
2009-10	Sweetwater #1	Rock Springs High School	11	American Indian/Alaska Native	Math	1 - 5							
2009-10	Sweetwater #1	Rock Springs High School	11	White	Math	180 - 189	98.4%	8.15%	28.26%	45.65%	17.93%	36.41%	63.59%
2009-10	Sweetwater #1	Rock Springs High School	11	Female	Math	100 - 109	99.0%	9.62%	30.77%	47.12%	12.50%	40.38%	59.62%
2009-10	Sweetwater #1	Rock Springs High School	11	Male	Math	130 - 139	98.5%	10.61%	26.52%	42.42%	20.45%	37.12%	62.88%

Public PAWS Results - School Level - Disaggregated

School Year	District Name	School Name	Grade	Subgroup	Subject	Number of Students Tested	Participation Rate	Percent Below Basic	Percent Basic	Percent Proficient	Percent Advanced	Percent Basic and Blow	Percent Proficient and Advanced
2009-10	Sweetwater #1	Rock Springs High School	11	English Language Learner	Math	6 - 9	100.0%					>= 80%	<= 20%
2009-10	Sweetwater #1	Rock Springs High School	11	Free/Reduced Lunch	Math	50 - 59	100.0%	14.29%	32.14%	41.07%	12.50%	46.43%	53.57%
2009-10	Sweetwater #1	Rock Springs High School	11	Individual Education Plan	Math	20 - 29	95.8%	34.78%	52.17%	8.70%	4.35%	86.96%	13.04%
2009-10	Sweetwater #1	Rock Springs High School	11	All Students	Reading	230 - 239	98.7%	13.98%	23.31%	50.42%	12.29%	37.29%	62.71%
2009-10	Sweetwater #1	Rock Springs High School	11	Asian/Pacific Islander	Reading	6 - 9	100.0%	14.29%	14.29%	57.14%	14.29%	28.57%	71.43%
2009-10	Sweetwater #1	Rock Springs High School	11	Black	Reading	6 - 9	100.0%	25.00%	25.00%	50.00%	0.00%	50.00%	50.00%
2009-10	Sweetwater #1	Rock Springs High School	11	Hispanic	Reading	30 - 39	100.0%	30.30%	24.24%	36.36%	9.09%	54.55%	45.45%
2009-10	Sweetwater #1	Rock Springs High School	11	American Indian/Alaska Native	Reading	1 - 5							
2009-10	Sweetwater #1	Rock Springs High School	11	White	Reading	180 - 189	98.4%	10.87%	23.37%	52.72%	13.04%	34.24%	65.76%
2009-10	Sweetwater #1	Rock Springs High School	11	Female	Reading	100 - 109	99.0%	12.50%	24.04%	52.88%	10.58%	36.54%	63.46%
2009-10	Sweetwater #1	Rock Springs High School	11	Male	Reading	130 - 139	98.5%	15.15%	22.73%	48.48%	13.64%	37.88%	62.12%
2009-10	Sweetwater #1	Rock Springs High School	11	English Language Learner	Reading	6 - 9	100.0%					>= 80%	<= 20%
2009-10	Sweetwater #1	Rock Springs High School	11	Free/Reduced Lunch	Reading	50 - 59	100.0%	21.43%	23.21%	46.43%	8.93%	44.64%	55.36%
2009-10	Sweetwater #1	Rock Springs High School	11	Individual Education Plan	Reading	20 - 29	95.8%	43.48%	30.43%	21.74%	4.35%	73.91%	26.09%
2009-10	Sweetwater #1	Rock Springs High School	11	All Students	Writing	230 - 239	98.7%	0.85%	12.29%	61.86%	25.00%	13.14%	86.86%
2009-10	Sweetwater #1	Rock Springs High School	11	Asian/Pacific Islander	Writing	6 - 9	100.0%					<= 20%	>= 80%
2009-10	Sweetwater #1	Rock Springs High School	11	Black	Writing	6 - 9	100.0%	0.00%	25.00%	62.50%	12.50%	25.00%	75.00%
2009-10	Sweetwater #1	Rock Springs High School	11	Hispanic	Writing	30 - 39	100.0%	3.03%	18.18%	66.67%	12.12%	21.21%	78.79%
2009-10	Sweetwater #1	Rock Springs High School	11	American Indian/Alaska Native	Writing	1 - 5							
2009-10	Sweetwater #1	Rock Springs High School	11	White	Writing	180 - 189	98.4%	0.54%	10.87%	61.41%	27.17%	11.41%	88.59%
2009-10	Sweetwater #1	Rock Springs High School	11	Female	Writing	100 - 109	99.0%	0.00%	12.50%	58.65%	28.85%	12.50%	87.50%
2009-10	Sweetwater #1	Rock Springs High School	11	Male	Writing	130 - 139	98.5%	1.52%	12.12%	64.39%	21.97%	13.64%	86.36%
2009-10	Sweetwater #1	Rock Springs High School	11	English Language Learner	Writing	6 - 9	100.0%					>= 80%	<= 20%

Public PAWS Results - School Level - Disaggregated

School Year	District Name	School Name	Grade	Subgroup	Subject	Number of Students Tested	Participation Rate	Percent Below Basic	Percent Basic	Percent Proficient	Percent Advanced	Percent Basic and Blow	Percent Proficient and Advanced
2009-10	Sweetwater #1	Rock Springs High School	11	Free/Reduced Lunch	Writing	50 - 59	100.0%	1.79%	16.07%	64.29%	17.86%	17.86%	82.14%
2009-10	Sweetwater #1	Rock Springs High School	11	Individual Education Plan	Writing	20 - 29	95.8%	4.35%	52.17%	43.48%	0.00%	56.52%	43.48%
2009-10	Sweetwater #1	Rock Springs High School	11	All Students	Science	230 - 239	98.7%	17.80%	38.14%	31.78%	12.29%	55.93%	44.07%
2009-10	Sweetwater #1	Rock Springs High School	11	Asian/Pacific Islander	Science	6 - 9	100.0%	0.00%	42.86%	28.57%	28.57%	42.86%	57.14%
2009-10	Sweetwater #1	Rock Springs High School	11	Black	Science	6 - 9	100.0%					>= 80%	<= 20%
2009-10	Sweetwater #1	Rock Springs High School	11	Hispanic	Science	30 - 39	100.0%	33.33%	39.39%	24.24%	3.03%	72.73%	27.27%
2009-10	Sweetwater #1	Rock Springs High School	11	American Indian/Alaska Native	Science	1 - 5							
2009-10	Sweetwater #1	Rock Springs High School	11	White	Science	180 - 189	98.4%	14.67%	38.04%	33.70%	13.59%	52.72%	47.28%
2009-10	Sweetwater #1	Rock Springs High School	11	Female	Science	100 - 109	99.0%	18.27%	40.38%	31.73%	9.62%	58.65%	41.35%
2009-10	Sweetwater #1	Rock Springs High School	11	Male	Science	130 - 139	98.5%	17.42%	36.36%	31.82%	14.39%	53.79%	46.21%
2009-10	Sweetwater #1	Rock Springs High School	11	English Language Learner	Science	6 - 9	100.0%					>= 80%	<= 20%
2009-10	Sweetwater #1	Rock Springs High School	11	Free/Reduced Lunch	Science	50 - 59	100.0%	26.79%	42.86%	23.21%	7.14%	69.64%	30.36%
2009-10	Sweetwater #1	Rock Springs High School	11	Individual Education Plan	Science	20 - 29	95.8%					>= 95%	<= 5%
2009-10	Sweetwater #1	Sage Elementary	03	All Students	Math	40 - 49	100.0%	11.36%	27.27%	36.36%	25.00%	38.64%	61.36%
2009-10	Sweetwater #1	Sage Elementary	03	Asian/Pacific Islander	Math	1 - 5							
2009-10	Sweetwater #1	Sage Elementary	03	Black	Math	1 - 5							
2009-10	Sweetwater #1	Sage Elementary	03	Hispanic	Math	10 - 19	100.0%	13.33%	46.67%	33.33%	6.67%	60.00%	40.00%
2009-10	Sweetwater #1	Sage Elementary	03	American Indian/Alaska Native	Math	0							
2009-10	Sweetwater #1	Sage Elementary	03	White	Math	20 - 29	100.0%	11.11%	18.52%	37.04%	33.33%	29.63%	70.37%
2009-10	Sweetwater #1	Sage Elementary	03	Female	Math	20 - 29	100.0%	20.83%	33.33%	29.17%	16.67%	54.17%	45.83%
2009-10	Sweetwater #1	Sage Elementary	03	Male	Math	20 - 29	100.0%	0.00%	20.00%	45.00%	35.00%	20.00%	80.00%
2009-10	Sweetwater #1	Sage Elementary	03	English Language Learner	Math	0							
2009-10	Sweetwater #1	Sage Elementary	03	Free/Reduced Lunch	Math	10 - 19	100.0%	31.25%	43.75%	25.00%	0.00%	75.00%	25.00%
2009-10	Sweetwater #1	Sage Elementary	03	Individual Education Plan	Math	1 - 5							
2009-10	Sweetwater #1	Sage Elementary	03	All Students	Reading	40 - 49	100.0%	18.18%	38.64%	38.64%	4.55%	56.82%	43.18%

Public PAWS Results - School Level - Disaggregated

School Year	District Name	School Name	Grade	Subgroup	Subject	Number of Students Tested	Participation Rate	Percent Below Basic	Percent Basic	Percent Proficient	Percent Advanced	Percent Basic and Below	Percent Proficient and Advanced
2009-10	Sweetwater #1	Sage Elementary	03	Asian/Pacific Islander	Reading	1 - 5							
2009-10	Sweetwater #1	Sage Elementary	03	Black	Reading	1 - 5							
2009-10	Sweetwater #1	Sage Elementary	03	Hispanic	Reading	10 - 19	100.0%	26.67%	53.33%	20.00%	0.00%	80.00%	20.00%
2009-10	Sweetwater #1	Sage Elementary	03	American Indian/Alaska Native	Reading	0							
2009-10	Sweetwater #1	Sage Elementary	03	White	Reading	20 - 29	100.0%	14.81%	33.33%	44.44%	7.41%	48.15%	51.85%
2009-10	Sweetwater #1	Sage Elementary	03	Female	Reading	20 - 29	100.0%	29.17%	33.33%	37.50%	0.00%	62.50%	37.50%
2009-10	Sweetwater #1	Sage Elementary	03	Male	Reading	20 - 29	100.0%	5.00%	45.00%	40.00%	10.00%	50.00%	50.00%
2009-10	Sweetwater #1	Sage Elementary	03	English Language Learner	Reading	0							
2009-10	Sweetwater #1	Sage Elementary	03	Free/Reduced Lunch	Reading	10 - 19	100.0%	50.00%	37.50%	12.50%	0.00%	87.50%	12.50%
2009-10	Sweetwater #1	Sage Elementary	03	Individual Education Plan	Reading	1 - 5							
2009-10	Sweetwater #1	Sage Elementary	03	All Students	Writing	40 - 49	100.0%	0.00%	22.73%	63.64%	13.64%	22.73%	77.27%
2009-10	Sweetwater #1	Sage Elementary	03	Asian/Pacific Islander	Writing	1 - 5							
2009-10	Sweetwater #1	Sage Elementary	03	Black	Writing	1 - 5							
2009-10	Sweetwater #1	Sage Elementary	03	Hispanic	Writing	10 - 19	100.0%	0.00%	26.67%	66.67%	6.67%	26.67%	73.33%
2009-10	Sweetwater #1	Sage Elementary	03	American Indian/Alaska Native	Writing	0							
2009-10	Sweetwater #1	Sage Elementary	03	White	Writing	20 - 29	100.0%	0.00%	22.22%	59.26%	18.52%	22.22%	77.78%
2009-10	Sweetwater #1	Sage Elementary	03	Female	Writing	20 - 29	100.0%	0.00%	16.67%	70.83%	12.50%	16.67%	83.33%
2009-10	Sweetwater #1	Sage Elementary	03	Male	Writing	20 - 29	100.0%	0.00%	30.00%	55.00%	15.00%	30.00%	70.00%
2009-10	Sweetwater #1	Sage Elementary	03	English Language Learner	Writing	0							
2009-10	Sweetwater #1	Sage Elementary	03	Free/Reduced Lunch	Writing	10 - 19	100.0%	0.00%	43.75%	56.25%	0.00%	43.75%	56.25%
2009-10	Sweetwater #1	Sage Elementary	03	Individual Education Plan	Writing	1 - 5							
2009-10	Sweetwater #1	Sage Elementary	04	All Students	Math	40 - 49	100.0%	14.58%	20.83%	47.92%	16.67%	35.42%	64.58%
2009-10	Sweetwater #1	Sage Elementary	04	Asian/Pacific Islander	Math	0							
2009-10	Sweetwater #1	Sage Elementary	04	Black	Math	0							
2009-10	Sweetwater #1	Sage Elementary	04	Hispanic	Math	10 - 19	100.0%	10.00%	40.00%	50.00%	0.00%	50.00%	50.00%
2009-10	Sweetwater #1	Sage Elementary	04	American Indian/Alaska Native	Math	0							
2009-10	Sweetwater #1	Sage Elementary	04	White	Math	30 - 39	100.0%	15.79%	15.79%	47.37%	21.05%	31.58%	68.42%

Public PAWS Results - School Level - Disaggregated

School Year	District Name	School Name	Grade	Subgroup	Subject	Number of Students Tested	Participation Rate	Percent Below Basic	Percent Basic	Percent Proficient	Percent Advanced	Percent Basic and Below	Percent Proficient and Advanced
2009-10	Sweetwater #1	Sage Elementary	04	Female	Math	20 - 29	100.0%	21.74%	17.39%	43.48%	17.39%	39.13%	60.87%
2009-10	Sweetwater #1	Sage Elementary	04	Male	Math	20 - 29	100.0%	8.00%	24.00%	52.00%	16.00%	32.00%	68.00%
2009-10	Sweetwater #1	Sage Elementary	04	English Language Learner	Math	1 - 5							
2009-10	Sweetwater #1	Sage Elementary	04	Free/Reduced Lunch	Math	10 - 19	100.0%	31.25%	31.25%	31.25%	6.25%	62.50%	37.50%
2009-10	Sweetwater #1	Sage Elementary	04	Individual Education Plan	Math	1 - 5							
2009-10	Sweetwater #1	Sage Elementary	04	All Students	Reading	40 - 49	100.0%	8.33%	12.50%	62.50%	16.67%	20.83%	79.17%
2009-10	Sweetwater #1	Sage Elementary	04	Asian/Pacific Islander	Reading	0							
2009-10	Sweetwater #1	Sage Elementary	04	Black	Reading	0							
2009-10	Sweetwater #1	Sage Elementary	04	Hispanic	Reading	10 - 19	100.0%	10.00%	20.00%	60.00%	10.00%	30.00%	70.00%
2009-10	Sweetwater #1	Sage Elementary	04	American Indian/Alaska Native	Reading	0							
2009-10	Sweetwater #1	Sage Elementary	04	White	Reading	30 - 39	100.0%	7.89%	10.53%	63.16%	18.42%	18.42%	81.58%
2009-10	Sweetwater #1	Sage Elementary	04	Female	Reading	20 - 29	100.0%	13.04%	17.39%	52.17%	17.39%	30.43%	69.57%
2009-10	Sweetwater #1	Sage Elementary	04	Male	Reading	20 - 29	100.0%	4.00%	8.00%	72.00%	16.00%	12.00%	88.00%
2009-10	Sweetwater #1	Sage Elementary	04	English Language Learner	Reading	1 - 5							
2009-10	Sweetwater #1	Sage Elementary	04	Free/Reduced Lunch	Reading	10 - 19	100.0%	18.75%	12.50%	56.25%	12.50%	31.25%	68.75%
2009-10	Sweetwater #1	Sage Elementary	04	Individual Education Plan	Reading	1 - 5							
2009-10	Sweetwater #1	Sage Elementary	04	All Students	Writing	40 - 49	100.0%	6.25%	18.75%	60.42%	14.58%	25.00%	75.00%
2009-10	Sweetwater #1	Sage Elementary	04	Asian/Pacific Islander	Writing	0							
2009-10	Sweetwater #1	Sage Elementary	04	Black	Writing	0							
2009-10	Sweetwater #1	Sage Elementary	04	Hispanic	Writing	10 - 19	100.0%	20.00%	0.00%	70.00%	10.00%	20.00%	80.00%
2009-10	Sweetwater #1	Sage Elementary	04	American Indian/Alaska Native	Writing	0							
2009-10	Sweetwater #1	Sage Elementary	04	White	Writing	30 - 39	100.0%	2.63%	23.68%	57.89%	15.79%	26.32%	73.68%
2009-10	Sweetwater #1	Sage Elementary	04	Female	Writing	20 - 29	100.0%	4.35%	21.74%	52.17%	21.74%	26.09%	73.91%
2009-10	Sweetwater #1	Sage Elementary	04	Male	Writing	20 - 29	100.0%	8.00%	16.00%	68.00%	8.00%	24.00%	76.00%
2009-10	Sweetwater #1	Sage Elementary	04	English Language Learner	Writing	1 - 5							
2009-10	Sweetwater #1	Sage Elementary	04	Free/Reduced Lunch	Writing	10 - 19	100.0%	18.75%	31.25%	50.00%	0.00%	50.00%	50.00%
2009-10	Sweetwater #1	Sage Elementary	04	Individual Education Plan	Writing	1 - 5							
2009-10	Sweetwater #1	Sage Elementary	04	All Students	Science	40 - 49	100.0%	10.42%	47.92%	33.33%	8.33%	58.33%	41.67%

Public PAWS Results - School Level - Disaggregated

School Year	District Name	School Name	Grade	Subgroup	Subject	Number of Students Tested	Participation Rate	Percent Below Basic	Percent Basic	Percent Proficient	Percent Advanced	Percent Basic and Below	Percent Proficient and Advanced
2009-10	Sweetwater #1	Sage Elementary	04	Asian/Pacific Islander	Science	0							
2009-10	Sweetwater #1	Sage Elementary	04	Black	Science	0							
2009-10	Sweetwater #1	Sage Elementary	04	Hispanic	Science	10 - 19	100.0%	20.00%	30.00%	50.00%	0.00%	50.00%	50.00%
2009-10	Sweetwater #1	Sage Elementary	04	American Indian/Alaska Native	Science	0							
2009-10	Sweetwater #1	Sage Elementary	04	White	Science	30 - 39	100.0%	7.89%	52.63%	28.95%	10.53%	60.53%	39.47%
2009-10	Sweetwater #1	Sage Elementary	04	Female	Science	20 - 29	100.0%	13.04%	60.87%	21.74%	4.35%	73.91%	26.09%
2009-10	Sweetwater #1	Sage Elementary	04	Male	Science	20 - 29	100.0%	8.00%	36.00%	44.00%	12.00%	44.00%	56.00%
2009-10	Sweetwater #1	Sage Elementary	04	English Language Learner	Science	1 - 5							
2009-10	Sweetwater #1	Sage Elementary	04	Free/Reduced Lunch	Science	10 - 19	100.0%	18.75%	62.50%	18.75%	0.00%	81.25%	18.75%
2009-10	Sweetwater #1	Sage Elementary	04	Individual Education Plan	Science	1 - 5							
2009-10	Sweetwater #1	Walnut Elementary	03	All Students	Math	60 - 69	100.0%					<= 5%	>= 95%
2009-10	Sweetwater #1	Walnut Elementary	03	Asian/Pacific Islander	Math	1 - 5							
2009-10	Sweetwater #1	Walnut Elementary	03	Black	Math	0							
2009-10	Sweetwater #1	Walnut Elementary	03	Hispanic	Math	1 - 5							
2009-10	Sweetwater #1	Walnut Elementary	03	American Indian/Alaska Native	Math	0							
2009-10	Sweetwater #1	Walnut Elementary	03	White	Math	60 - 69	100.0%					<= 5%	>= 95%
2009-10	Sweetwater #1	Walnut Elementary	03	Female	Math	30 - 39	100.0%					<= 5%	>= 95%
2009-10	Sweetwater #1	Walnut Elementary	03	Male	Math	30 - 39	100.0%					<= 5%	>= 95%
2009-10	Sweetwater #1	Walnut Elementary	03	English Language Learner	Math	0							
2009-10	Sweetwater #1	Walnut Elementary	03	Free/Reduced Lunch	Math	30 - 39	100.0%					<= 5%	>= 95%
2009-10	Sweetwater #1	Walnut Elementary	03	Individual Education Plan	Math	10 - 19	100.0%					<= 10%	>= 90%
2009-10	Sweetwater #1	Walnut Elementary	03	All Students	Reading	60 - 69	100.0%					<= 5%	>= 95%
2009-10	Sweetwater #1	Walnut Elementary	03	Asian/Pacific Islander	Reading	1 - 5							
2009-10	Sweetwater #1	Walnut Elementary	03	Black	Reading	0							
2009-10	Sweetwater #1	Walnut Elementary	03	Hispanic	Reading	1 - 5							
2009-10	Sweetwater #1	Walnut Elementary	03	American Indian/Alaska Native	Reading	0							
2009-10	Sweetwater #1	Walnut Elementary	03	White	Reading	60 - 69	100.0%					<= 5%	>= 95%

Public PAWS Results - School Level - Disaggregated

School Year	District Name	School Name	Grade	Subgroup	Subject	Number of Students Tested	Participation Rate	Percent Below Basic	Percent Basic	Percent Proficient	Percent Advanced	Percent Basic and Blow	Percent Proficient and Advanced
2009-10	Sweetwater #1	Walnut Elementary	03	Female	Reading	30 - 39	100.0%					<= 5%	>= 95%
2009-10	Sweetwater #1	Walnut Elementary	03	Male	Reading	30 - 39	100.0%	0.00%	6.25%	59.38%	34.38%	6.25%	93.75%
2009-10	Sweetwater #1	Walnut Elementary	03	English Language Learner	Reading	0							
2009-10	Sweetwater #1	Walnut Elementary	03	Free/Reduced Lunch	Reading	30 - 39	100.0%	0.00%	10.00%	73.33%	16.67%	10.00%	90.00%
2009-10	Sweetwater #1	Walnut Elementary	03	Individual Education Plan	Reading	10 - 19	100.0%					<= 10%	>= 90%
2009-10	Sweetwater #1	Walnut Elementary	03	All Students	Writing	60 - 69	100.0%	0.00%	10.29%	47.06%	42.65%	10.29%	89.71%
2009-10	Sweetwater #1	Walnut Elementary	03	Asian/Pacific Islander	Writing	1 - 5							
2009-10	Sweetwater #1	Walnut Elementary	03	Black	Writing	0							
2009-10	Sweetwater #1	Walnut Elementary	03	Hispanic	Writing	1 - 5							
2009-10	Sweetwater #1	Walnut Elementary	03	American Indian/Alaska Native	Writing	0							
2009-10	Sweetwater #1	Walnut Elementary	03	White	Writing	60 - 69	100.0%	0.00%	11.67%	46.67%	41.67%	11.67%	88.33%
2009-10	Sweetwater #1	Walnut Elementary	03	Female	Writing	30 - 39	100.0%	0.00%	5.56%	44.44%	50.00%	5.56%	94.44%
2009-10	Sweetwater #1	Walnut Elementary	03	Male	Writing	30 - 39	100.0%	0.00%	15.63%	50.00%	34.38%	15.63%	84.38%
2009-10	Sweetwater #1	Walnut Elementary	03	English Language Learner	Writing	0							
2009-10	Sweetwater #1	Walnut Elementary	03	Free/Reduced Lunch	Writing	30 - 39	100.0%	0.00%	20.00%	46.67%	33.33%	20.00%	80.00%
2009-10	Sweetwater #1	Walnut Elementary	03	Individual Education Plan	Writing	10 - 19	100.0%	0.00%	36.36%	54.55%	9.09%	36.36%	63.64%
2009-10	Sweetwater #1	Walnut Elementary	04	All Students	Math	60 - 69	100.0%					<= 5%	>= 95%
2009-10	Sweetwater #1	Walnut Elementary	04	Asian/Pacific Islander	Math	0							
2009-10	Sweetwater #1	Walnut Elementary	04	Black	Math	1 - 5							
2009-10	Sweetwater #1	Walnut Elementary	04	Hispanic	Math	1 - 5							
2009-10	Sweetwater #1	Walnut Elementary	04	American Indian/Alaska Native	Math	0							
2009-10	Sweetwater #1	Walnut Elementary	04	White	Math	50 - 59	100.0%					<= 5%	>= 95%
2009-10	Sweetwater #1	Walnut Elementary	04	Female	Math	40 - 49	100.0%					<= 5%	>= 95%
2009-10	Sweetwater #1	Walnut Elementary	04	Male	Math	20 - 29	100.0%					<= 5%	>= 95%
2009-10	Sweetwater #1	Walnut Elementary	04	English Language Learner	Math	0							
2009-10	Sweetwater #1	Walnut Elementary	04	Free/Reduced Lunch	Math	20 - 29	100.0%					<= 5%	>= 95%
2009-10	Sweetwater #1	Walnut Elementary	04	Individual Education Plan	Math	6 - 9	100.0%					<= 20%	>= 80%
2009-10	Sweetwater #1	Walnut Elementary	04	All Students	Reading	60 - 69	100.0%					<= 5%	>= 95%

Public PAWS Results - School Level - Disaggregated

School Year	District Name	School Name	Grade	Subgroup	Subject	Number of Students Tested	Participation Rate	Percent Below Basic	Percent Basic	Percent Proficient	Percent Advanced	Percent Basic and Blow	Percent Proficient and Advanced
2009-10	Sweetwater #1	Walnut Elementary	04	Asian/Pacific Islander	Reading	0							
2009-10	Sweetwater #1	Walnut Elementary	04	Black	Reading	1 - 5							
2009-10	Sweetwater #1	Walnut Elementary	04	Hispanic	Reading	1 - 5							
2009-10	Sweetwater #1	Walnut Elementary	04	American Indian/Alaska Native	Reading	0							
2009-10	Sweetwater #1	Walnut Elementary	04	White	Reading	50 - 59	100.0%					<= 5%	>= 95%
2009-10	Sweetwater #1	Walnut Elementary	04	Female	Reading	40 - 49	100.0%					<= 5%	>= 95%
2009-10	Sweetwater #1	Walnut Elementary	04	Male	Reading	20 - 29	100.0%	0.00%	7.69%	57.69%	34.62%	7.69%	92.31%
2009-10	Sweetwater #1	Walnut Elementary	04	English Language Learner	Reading	0							
2009-10	Sweetwater #1	Walnut Elementary	04	Free/Reduced Lunch	Reading	20 - 29	100.0%					<= 5%	>= 95%
2009-10	Sweetwater #1	Walnut Elementary	04	Individual Education Plan	Reading	6 - 9	100.0%	0.00%	28.57%	57.14%	14.29%	28.57%	71.43%
2009-10	Sweetwater #1	Walnut Elementary	04	All Students	Writing	60 - 69	100.0%	0.00%	5.97%	58.21%	35.82%	5.97%	94.03%
2009-10	Sweetwater #1	Walnut Elementary	04	Asian/Pacific Islander	Writing	0							
2009-10	Sweetwater #1	Walnut Elementary	04	Black	Writing	1 - 5							
2009-10	Sweetwater #1	Walnut Elementary	04	Hispanic	Writing	1 - 5							
2009-10	Sweetwater #1	Walnut Elementary	04	American Indian/Alaska Native	Writing	0							
2009-10	Sweetwater #1	Walnut Elementary	04	White	Writing	50 - 59	100.0%	0.00%	6.78%	57.63%	35.59%	6.78%	93.22%
2009-10	Sweetwater #1	Walnut Elementary	04	Female	Writing	40 - 49	100.0%					<= 5%	>= 95%
2009-10	Sweetwater #1	Walnut Elementary	04	Male	Writing	20 - 29	100.0%	0.00%	11.54%	65.38%	23.08%	11.54%	88.46%
2009-10	Sweetwater #1	Walnut Elementary	04	English Language Learner	Writing	0							
2009-10	Sweetwater #1	Walnut Elementary	04	Free/Reduced Lunch	Writing	20 - 29	100.0%					<= 5%	>= 95%
2009-10	Sweetwater #1	Walnut Elementary	04	Individual Education Plan	Writing	6 - 9	100.0%	0.00%	28.57%	71.43%	0.00%	28.57%	71.43%
2009-10	Sweetwater #1	Walnut Elementary	04	All Students	Science	60 - 69	100.0%	0.00%	19.40%	65.67%	14.93%	19.40%	80.60%
2009-10	Sweetwater #1	Walnut Elementary	04	Asian/Pacific Islander	Science	0							
2009-10	Sweetwater #1	Walnut Elementary	04	Black	Science	1 - 5							
2009-10	Sweetwater #1	Walnut Elementary	04	Hispanic	Science	1 - 5							
2009-10	Sweetwater #1	Walnut Elementary	04	American Indian/Alaska Native	Science	0							
2009-10	Sweetwater #1	Walnut Elementary	04	White	Science	50 - 59	100.0%	0.00%	15.25%	69.49%	15.25%	15.25%	84.75%

Public PAWS Results - School Level - Disaggregated

School Year	District Name	School Name	Grade	Subgroup	Subject	Number of Students Tested	Participation Rate	Percent Below Basic	Percent Basic	Percent Proficient	Percent Advanced	Percent Basic and Blow	Percent Proficient and Advanced
2009-10	Sweetwater #1	Walnut Elementary	04	Female	Science	40 - 49	100.0%	0.00%	19.51%	63.41%	17.07%	19.51%	80.49%
2009-10	Sweetwater #1	Walnut Elementary	04	Male	Science	20 - 29	100.0%	0.00%	19.23%	69.23%	11.54%	19.23%	80.77%
2009-10	Sweetwater #1	Walnut Elementary	04	English Language Learner	Science	0							
2009-10	Sweetwater #1	Walnut Elementary	04	Free/Reduced Lunch	Science	20 - 29	100.0%	0.00%	20.00%	60.00%	20.00%	20.00%	80.00%
2009-10	Sweetwater #1	Walnut Elementary	04	Individual Education Plan	Science	6 - 9	100.0%					<= 20%	>= 80%
2009-10	Sweetwater #1	Westridge Elementary	03	All Students	Math	70 - 79	100.0%	2.60%	22.08%	49.35%	25.97%	24.68%	75.32%
2009-10	Sweetwater #1	Westridge Elementary	03	Asian/Pacific Islander	Math	1 - 5							
2009-10	Sweetwater #1	Westridge Elementary	03	Black	Math	1 - 5							
2009-10	Sweetwater #1	Westridge Elementary	03	Hispanic	Math	10 - 19	100.0%	0.00%	30.00%	40.00%	30.00%	30.00%	70.00%
2009-10	Sweetwater #1	Westridge Elementary	03	American Indian/Alaska Native	Math	0							
2009-10	Sweetwater #1	Westridge Elementary	03	White	Math	60 - 69	100.0%	3.17%	20.63%	50.79%	25.40%	23.81%	76.19%
2009-10	Sweetwater #1	Westridge Elementary	03	Female	Math	30 - 39	100.0%	5.41%	27.03%	43.24%	24.32%	32.43%	67.57%
2009-10	Sweetwater #1	Westridge Elementary	03	Male	Math	40 - 49	100.0%	0.00%	17.50%	55.00%	27.50%	17.50%	82.50%
2009-10	Sweetwater #1	Westridge Elementary	03	English Language Learner	Math	0							
2009-10	Sweetwater #1	Westridge Elementary	03	Free/Reduced Lunch	Math	20 - 29	100.0%	0.00%	21.74%	60.87%	17.39%	21.74%	78.26%
2009-10	Sweetwater #1	Westridge Elementary	03	Individual Education Plan	Math	6 - 9	100.0%					<= 20%	>= 80%
2009-10	Sweetwater #1	Westridge Elementary	03	All Students	Reading	70 - 79	100.0%	11.69%	42.86%	40.26%	5.19%	54.55%	45.45%
2009-10	Sweetwater #1	Westridge Elementary	03	Asian/Pacific Islander	Reading	1 - 5							
2009-10	Sweetwater #1	Westridge Elementary	03	Black	Reading	1 - 5							
2009-10	Sweetwater #1	Westridge Elementary	03	Hispanic	Reading	10 - 19	100.0%	10.00%	40.00%	50.00%	0.00%	50.00%	50.00%
2009-10	Sweetwater #1	Westridge Elementary	03	American Indian/Alaska Native	Reading	0							
2009-10	Sweetwater #1	Westridge Elementary	03	White	Reading	60 - 69	100.0%	11.11%	44.44%	38.10%	6.35%	55.56%	44.44%
2009-10	Sweetwater #1	Westridge Elementary	03	Female	Reading	30 - 39	100.0%	8.11%	40.54%	48.65%	2.70%	48.65%	51.35%
2009-10	Sweetwater #1	Westridge Elementary	03	Male	Reading	40 - 49	100.0%	15.00%	45.00%	32.50%	7.50%	60.00%	40.00%
2009-10	Sweetwater #1	Westridge Elementary	03	English Language Learner	Reading	0							
2009-10	Sweetwater #1	Westridge Elementary	03	Free/Reduced Lunch	Reading	20 - 29	100.0%	17.39%	47.83%	34.78%	0.00%	65.22%	34.78%
2009-10	Sweetwater #1	Westridge Elementary	03	Individual Education Plan	Reading	6 - 9	100.0%	44.44%	11.11%	44.44%	0.00%	55.56%	44.44%
2009-10	Sweetwater #1	Westridge Elementary	03	All Students	Writing	70 - 79	100.0%	0.00%	20.78%	53.25%	25.97%	20.78%	79.22%

Public PAWS Results - School Level - Disaggregated

School Year	District Name	School Name	Grade	Subgroup	Subject	Number of Students Tested	Participation Rate	Percent Below Basic	Percent Basic	Percent Proficient	Percent Advanced	Percent Basic and Below	Percent Proficient and Advanced
2009-10	Sweetwater #1	Westridge Elementary	03	Asian/Pacific Islander	Writing	1 - 5							
2009-10	Sweetwater #1	Westridge Elementary	03	Black	Writing	1 - 5							
2009-10	Sweetwater #1	Westridge Elementary	03	Hispanic	Writing	10 - 19	100.0%					<= 10%	>= 90%
2009-10	Sweetwater #1	Westridge Elementary	03	American Indian/Alaska Native	Writing	0							
2009-10	Sweetwater #1	Westridge Elementary	03	White	Writing	60 - 69	100.0%	0.00%	23.81%	49.21%	26.98%	23.81%	76.19%
2009-10	Sweetwater #1	Westridge Elementary	03	Female	Writing	30 - 39	100.0%	0.00%	18.92%	54.05%	27.03%	18.92%	81.08%
2009-10	Sweetwater #1	Westridge Elementary	03	Male	Writing	40 - 49	100.0%	0.00%	22.50%	52.50%	25.00%	22.50%	77.50%
2009-10	Sweetwater #1	Westridge Elementary	03	English Language Learner	Writing	0							
2009-10	Sweetwater #1	Westridge Elementary	03	Free/Reduced Lunch	Writing	20 - 29	100.0%	0.00%	30.43%	56.52%	13.04%	30.43%	69.57%
2009-10	Sweetwater #1	Westridge Elementary	03	Individual Education Plan	Writing	6 - 9	100.0%	0.00%	55.56%	22.22%	22.22%	55.56%	44.44%
2009-10	Sweetwater #1	Westridge Elementary	04	All Students	Math	70 - 79	98.7%	9.46%	20.27%	55.41%	14.86%	29.73%	70.27%
2009-10	Sweetwater #1	Westridge Elementary	04	Asian/Pacific Islander	Math	1 - 5							
2009-10	Sweetwater #1	Westridge Elementary	04	Black	Math	1 - 5							
2009-10	Sweetwater #1	Westridge Elementary	04	Hispanic	Math	10 - 19	100.0%	10.00%	10.00%	70.00%	10.00%	20.00%	80.00%
2009-10	Sweetwater #1	Westridge Elementary	04	American Indian/Alaska Native	Math	1 - 5							
2009-10	Sweetwater #1	Westridge Elementary	04	White	Math	60 - 69	98.4%	8.33%	21.67%	55.00%	15.00%	30.00%	70.00%
2009-10	Sweetwater #1	Westridge Elementary	04	Female	Math	30 - 39	96.9%	6.45%	12.90%	64.52%	16.13%	19.35%	80.65%
2009-10	Sweetwater #1	Westridge Elementary	04	Male	Math	40 - 49	100.0%	11.63%	25.58%	48.84%	13.95%	37.21%	62.79%
2009-10	Sweetwater #1	Westridge Elementary	04	English Language Learner	Math	0							
2009-10	Sweetwater #1	Westridge Elementary	04	Free/Reduced Lunch	Math	30 - 39	100.0%	13.33%	16.67%	56.67%	13.33%	30.00%	70.00%
2009-10	Sweetwater #1	Westridge Elementary	04	Individual Education Plan	Math	6 - 9	100.0%					>= 80%	<= 20%
2009-10	Sweetwater #1	Westridge Elementary	04	All Students	Reading	70 - 79	98.7%	5.41%	22.97%	56.76%	14.86%	28.38%	71.62%
2009-10	Sweetwater #1	Westridge Elementary	04	Asian/Pacific Islander	Reading	1 - 5							
2009-10	Sweetwater #1	Westridge Elementary	04	Black	Reading	1 - 5							
2009-10	Sweetwater #1	Westridge Elementary	04	Hispanic	Reading	10 - 19	100.0%					<= 10%	>= 90%
2009-10	Sweetwater #1	Westridge Elementary	04	American Indian/Alaska Native	Reading	1 - 5							
2009-10	Sweetwater #1	Westridge Elementary	04	White	Reading	60 - 69	98.4%	5.00%	26.67%	53.33%	15.00%	31.67%	68.33%

Public PAWS Results - School Level - Disaggregated

School Year	District Name	School Name	Grade	Subgroup	Subject	Number of Students Tested	Participation Rate	Percent Below Basic	Percent Basic	Percent Proficient	Percent Advanced	Percent Basic and Blow	Percent Proficient and Advanced
2009-10	Sweetwater #1	Westridge Elementary	04	Female	Reading	30 - 39	96.9%	3.23%	19.35%	58.06%	19.35%	22.58%	77.42%
2009-10	Sweetwater #1	Westridge Elementary	04	Male	Reading	40 - 49	100.0%	6.98%	25.58%	55.81%	11.63%	32.56%	67.44%
2009-10	Sweetwater #1	Westridge Elementary	04	English Language Learner	Reading	0							
2009-10	Sweetwater #1	Westridge Elementary	04	Free/Reduced Lunch	Reading	30 - 39	100.0%	3.33%	36.67%	53.33%	6.67%	40.00%	60.00%
2009-10	Sweetwater #1	Westridge Elementary	04	Individual Education Plan	Reading	6 - 9	100.0%	22.22%	55.56%	22.22%	0.00%	77.78%	22.22%
2009-10	Sweetwater #1	Westridge Elementary	04	All Students	Writing	70 - 79	98.7%	0.00%	10.81%	63.51%	25.68%	10.81%	89.19%
2009-10	Sweetwater #1	Westridge Elementary	04	Asian/Pacific Islander	Writing	1 - 5							
2009-10	Sweetwater #1	Westridge Elementary	04	Black	Writing	1 - 5							
2009-10	Sweetwater #1	Westridge Elementary	04	Hispanic	Writing	10 - 19	100.0%					<= 10%	>= 90%
2009-10	Sweetwater #1	Westridge Elementary	04	American Indian/Alaska Native	Writing	1 - 5							
2009-10	Sweetwater #1	Westridge Elementary	04	White	Writing	60 - 69	98.4%	0.00%	11.67%	66.67%	21.67%	11.67%	88.33%
2009-10	Sweetwater #1	Westridge Elementary	04	Female	Writing	30 - 39	96.9%					<= 5%	>= 95%
2009-10	Sweetwater #1	Westridge Elementary	04	Male	Writing	40 - 49	100.0%	0.00%	16.28%	65.12%	18.60%	16.28%	83.72%
2009-10	Sweetwater #1	Westridge Elementary	04	English Language Learner	Writing	0							
2009-10	Sweetwater #1	Westridge Elementary	04	Free/Reduced Lunch	Writing	30 - 39	100.0%	0.00%	13.33%	63.33%	23.33%	13.33%	86.67%
2009-10	Sweetwater #1	Westridge Elementary	04	Individual Education Plan	Writing	6 - 9	100.0%	0.00%	55.56%	33.33%	11.11%	55.56%	44.44%
2009-10	Sweetwater #1	Westridge Elementary	04	All Students	Science	70 - 79	98.7%	14.86%	44.59%	37.84%	2.70%	59.46%	40.54%
2009-10	Sweetwater #1	Westridge Elementary	04	Asian/Pacific Islander	Science	1 - 5							
2009-10	Sweetwater #1	Westridge Elementary	04	Black	Science	1 - 5							
2009-10	Sweetwater #1	Westridge Elementary	04	Hispanic	Science	10 - 19	100.0%	10.00%	50.00%	40.00%	0.00%	60.00%	40.00%
2009-10	Sweetwater #1	Westridge Elementary	04	American Indian/Alaska Native	Science	1 - 5							
2009-10	Sweetwater #1	Westridge Elementary	04	White	Science	60 - 69	98.4%	15.00%	43.33%	38.33%	3.33%	58.33%	41.67%
2009-10	Sweetwater #1	Westridge Elementary	04	Female	Science	30 - 39	96.9%	12.90%	41.94%	38.71%	6.45%	54.84%	45.16%
2009-10	Sweetwater #1	Westridge Elementary	04	Male	Science	40 - 49	100.0%	16.28%	46.51%	37.21%	0.00%	62.79%	37.21%
2009-10	Sweetwater #1	Westridge Elementary	04	English Language Learner	Science	0							
2009-10	Sweetwater #1	Westridge Elementary	04	Free/Reduced Lunch	Science	30 - 39	100.0%	23.33%	53.33%	20.00%	3.33%	76.67%	23.33%
2009-10	Sweetwater #1	Westridge Elementary	04	Individual Education Plan	Science	6 - 9	100.0%					>= 80%	<= 20%

Public PAWS Results - School Level - Disaggregated

School Year	District Name	School Name	Grade	Subgroup	Subject	Number of Students Tested	Participation Rate	Percent Below Basic	Percent Basic	Percent Proficient	Percent Advanced	Percent Basic and Blow	Percent Proficient and Advanced
2009-10	Sweetwater #1	White Mountain Elementary	05	All Students	Math	260 - 269	99.6%	12.31%	28.36%	45.15%	14.18%	40.67%	59.33%
2009-10	Sweetwater #1	White Mountain Elementary	05	Asian/Pacific Islander	Math	1 - 5							
2009-10	Sweetwater #1	White Mountain Elementary	05	Black	Math	6 - 9	100.0%	37.50%	0.00%	62.50%	0.00%	37.50%	62.50%
2009-10	Sweetwater #1	White Mountain Elementary	05	Hispanic	Math	40 - 49	98.0%	18.37%	32.65%	46.94%	2.04%	51.02%	48.98%
2009-10	Sweetwater #1	White Mountain Elementary	05	American Indian/Alaska Native	Math	1 - 5							
2009-10	Sweetwater #1	White Mountain Elementary	05	White	Math	200 - 209	100.0%	9.66%	28.99%	43.96%	17.39%	38.65%	61.35%
2009-10	Sweetwater #1	White Mountain Elementary	05	Female	Math	110 - 119	99.1%	12.73%	30.00%	48.18%	9.09%	42.73%	57.27%
2009-10	Sweetwater #1	White Mountain Elementary	05	Male	Math	150 - 159	100.0%	12.03%	27.22%	43.04%	17.72%	39.24%	60.76%
2009-10	Sweetwater #1	White Mountain Elementary	05	English Language Learner	Math	1 - 5							
2009-10	Sweetwater #1	White Mountain Elementary	05	Free/Reduced Lunch	Math	100 - 109	100.0%	14.71%	33.33%	45.10%	6.86%	48.04%	51.96%
2009-10	Sweetwater #1	White Mountain Elementary	05	Individual Education Plan	Math	40 - 49	100.0%	27.27%	31.82%	36.36%	4.55%	59.09%	40.91%
2009-10	Sweetwater #1	White Mountain Elementary	05	All Students	Reading	260 - 269	99.6%	22.56%	35.71%	36.09%	5.64%	58.27%	41.73%
2009-10	Sweetwater #1	White Mountain Elementary	05	Asian/Pacific Islander	Reading	1 - 5							
2009-10	Sweetwater #1	White Mountain Elementary	05	Black	Reading	6 - 9	100.0%	25.00%	25.00%	50.00%	0.00%	50.00%	50.00%
2009-10	Sweetwater #1	White Mountain Elementary	05	Hispanic	Reading	40 - 49	97.9%	23.40%	44.68%	27.66%	4.26%	68.09%	31.91%
2009-10	Sweetwater #1	White Mountain Elementary	05	American Indian/Alaska Native	Reading	1 - 5							
2009-10	Sweetwater #1	White Mountain Elementary	05	White	Reading	200 - 209	100.0%	22.22%	34.30%	37.20%	6.28%	56.52%	43.48%
2009-10	Sweetwater #1	White Mountain Elementary	05	Female	Reading	100 - 109	99.1%	17.59%	33.33%	45.37%	3.70%	50.93%	49.07%
2009-10	Sweetwater #1	White Mountain Elementary	05	Male	Reading	150 - 159	100.0%	25.95%	37.34%	29.75%	6.96%	63.29%	36.71%
2009-10	Sweetwater #1	White Mountain Elementary	05	English Language Learner	Reading	1 - 5							
2009-10	Sweetwater #1	White Mountain Elementary	05	Free/Reduced Lunch	Reading	100 - 109	100.0%	25.00%	40.00%	30.00%	5.00%	65.00%	35.00%
2009-10	Sweetwater #1	White Mountain Elementary	05	Individual Education Plan	Reading	40 - 49	100.0%	61.36%	20.45%	15.91%	2.27%	81.82%	18.18%
2009-10	Sweetwater #1	White Mountain Elementary	05	All Students	Writing	260 - 269	99.6%	6.39%	25.94%	64.29%	3.38%	32.33%	67.67%

Public PAWS Results - School Level - Disaggregated

School Year	District Name	School Name	Grade	Subgroup	Subject	Number of Students Tested	Participation Rate	Percent Below Basic	Percent Basic	Percent Proficient	Percent Advanced	Percent Basic and Blow	Percent Proficient and Advanced
2009-10	Sweetwater #1	White Mountain Elementary	05	Asian/Pacific Islander	Writing	1 - 5							
2009-10	Sweetwater #1	White Mountain Elementary	05	Black	Writing	6 - 9	100.0%	0.00%	25.00%	75.00%	0.00%	25.00%	75.00%
2009-10	Sweetwater #1	White Mountain Elementary	05	Hispanic	Writing	40 - 49	97.9%	6.38%	29.79%	59.57%	4.26%	36.17%	63.83%
2009-10	Sweetwater #1	White Mountain Elementary	05	American Indian/Alaska Native	Writing	1 - 5							
2009-10	Sweetwater #1	White Mountain Elementary	05	White	Writing	200 - 209	100.0%	6.76%	25.12%	64.73%	3.38%	31.88%	68.12%
2009-10	Sweetwater #1	White Mountain Elementary	05	Female	Writing	100 - 109	99.1%	4.63%	12.96%	77.78%	4.63%	17.59%	82.41%
2009-10	Sweetwater #1	White Mountain Elementary	05	Male	Writing	150 - 159	100.0%	7.59%	34.81%	55.06%	2.53%	42.41%	57.59%
2009-10	Sweetwater #1	White Mountain Elementary	05	English Language Learner	Writing	1 - 5							
2009-10	Sweetwater #1	White Mountain Elementary	05	Free/Reduced Lunch	Writing	100 - 109	100.0%	9.00%	30.00%	60.00%	1.00%	39.00%	61.00%
2009-10	Sweetwater #1	White Mountain Elementary	05	Individual Education Plan	Writing	40 - 49	100.0%	13.64%	45.45%	40.91%	0.00%	59.09%	40.91%
2009-10	Sweetwater #1	White Mountain Elementary	06	All Students	Math	280 - 289	99.7%	10.76%	15.63%	58.33%	15.28%	26.39%	73.61%
2009-10	Sweetwater #1	White Mountain Elementary	06	Asian/Pacific Islander	Math	0							
2009-10	Sweetwater #1	White Mountain Elementary	06	Black	Math	1 - 5							
2009-10	Sweetwater #1	White Mountain Elementary	06	Hispanic	Math	40 - 49	100.0%	17.02%	19.15%	55.32%	8.51%	36.17%	63.83%
2009-10	Sweetwater #1	White Mountain Elementary	06	American Indian/Alaska Native	Math	1 - 5							
2009-10	Sweetwater #1	White Mountain Elementary	06	White	Math	230 - 239	99.6%	9.44%	15.02%	58.37%	17.17%	24.46%	75.54%
2009-10	Sweetwater #1	White Mountain Elementary	06	Female	Math	140 - 149	99.3%	12.33%	15.75%	53.42%	18.49%	28.08%	71.92%
2009-10	Sweetwater #1	White Mountain Elementary	06	Male	Math	140 - 149	100.0%	9.15%	15.49%	63.38%	11.97%	24.65%	75.35%
2009-10	Sweetwater #1	White Mountain Elementary	06	English Language Learner	Math	1 - 5							
2009-10	Sweetwater #1	White Mountain Elementary	06	Free/Reduced Lunch	Math	100 - 109	100.0%	14.71%	20.59%	57.84%	6.86%	35.29%	64.71%
2009-10	Sweetwater #1	White Mountain Elementary	06	Individual Education Plan	Math	40 - 49	100.0%	48.84%	20.93%	27.91%	2.33%	69.77%	30.23%
2009-10	Sweetwater #1	White Mountain Elementary	06	All Students	Reading	280 - 289	99.7%	8.71%	24.39%	54.36%	12.54%	33.10%	66.90%
2009-10	Sweetwater #1	White Mountain Elementary	06	Asian/Pacific Islander	Reading	0							
2009-10	Sweetwater #1	White Mountain Elementary	06	Black	Reading	1 - 5							

Public PAWS Results - School Level - Disaggregated

School Year	District Name	School Name	Grade	Subgroup	Subject	Number of Students Tested	Participation Rate	Percent Below Basic	Percent Basic	Percent Proficient	Percent Advanced	Percent Basic and Blow	Percent Proficient and Advanced
2009-10	Sweetwater #1	White Mountain Elementary	06	Hispanic	Reading	40 - 49	100.0%	15.22%	28.26%	47.83%	8.70%	43.48%	56.52%
2009-10	Sweetwater #1	White Mountain Elementary	06	American Indian/Alaska Native	Reading	1 - 5							
2009-10	Sweetwater #1	White Mountain Elementary	06	White	Reading	230 - 239	99.6%	7.73%	22.75%	55.79%	13.73%	30.47%	69.53%
2009-10	Sweetwater #1	White Mountain Elementary	06	Female	Reading	140 - 149	99.3%	6.21%	23.45%	55.17%	15.17%	29.66%	70.34%
2009-10	Sweetwater #1	White Mountain Elementary	06	Male	Reading	140 - 149	100.0%	11.27%	25.35%	53.52%	9.86%	36.62%	63.38%
2009-10	Sweetwater #1	White Mountain Elementary	06	English Language Learner	Reading	1 - 5							
2009-10	Sweetwater #1	White Mountain Elementary	06	Free/Reduced Lunch	Reading	100 - 109	100.0%	13.86%	32.67%	47.52%	5.94%	46.53%	53.47%
2009-10	Sweetwater #1	White Mountain Elementary	06	Individual Education Plan	Reading	40 - 49	100.0%	34.88%	39.53%	23.26%	2.33%	74.42%	25.58%
2009-10	Sweetwater #1	White Mountain Elementary	06	All Students	Writing	280 - 289	99.7%	3.48%	42.16%	42.51%	11.85%	45.64%	54.36%
2009-10	Sweetwater #1	White Mountain Elementary	06	Asian/Pacific Islander	Writing	0							
2009-10	Sweetwater #1	White Mountain Elementary	06	Black	Writing	1 - 5							
2009-10	Sweetwater #1	White Mountain Elementary	06	Hispanic	Writing	40 - 49	100.0%	4.35%	43.48%	41.30%	10.87%	47.83%	52.17%
2009-10	Sweetwater #1	White Mountain Elementary	06	American Indian/Alaska Native	Writing	1 - 5							
2009-10	Sweetwater #1	White Mountain Elementary	06	White	Writing	230 - 239	99.6%	3.43%	41.20%	42.92%	12.45%	44.64%	55.36%
2009-10	Sweetwater #1	White Mountain Elementary	06	Female	Writing	140 - 149	99.3%	2.07%	31.03%	48.97%	17.93%	33.10%	66.90%
2009-10	Sweetwater #1	White Mountain Elementary	06	Male	Writing	140 - 149	100.0%	4.93%	53.52%	35.92%	5.63%	58.45%	41.55%
2009-10	Sweetwater #1	White Mountain Elementary	06	English Language Learner	Writing	1 - 5							
2009-10	Sweetwater #1	White Mountain Elementary	06	Free/Reduced Lunch	Writing	100 - 109	100.0%	6.93%	50.50%	34.65%	7.92%	57.43%	42.57%
2009-10	Sweetwater #1	White Mountain Elementary	06	Individual Education Plan	Writing	40 - 49	100.0%	13.95%	65.12%	13.95%	6.98%	79.07%	20.93%

AYP ADDITIONAL INDICATOR
GRADUATION RATE-
SCHOOL LEVEL

DISTRICT

School Year: 2009-2010;

District: 1901000 – Sweetwater Number One

ALL STUDENTS

Analysis Period	Graduation Rate
2008-2009	71.43%
2007-2008	67.01%

FARSON-EDEN HIGH SCHOOL

School Year: 2009-2010

District: 1901000 – Sweetwater Number One

School: 1901055 – *ALL STUDENTS*

Analysis Period	Graduation Rate
3 Year Average	87.18%
2008-2009	100.00%
2007-2008	61.54%
2006-2007	100.00%

INDEPENDENCE HIGH SCHOOL

School Year: 2009-2010

District: 1901000 – Sweetwater Number One

School: 1901057 - *ALL STUDENTS*

Analysis Period	Graduation Rate
2008-2009	58.33%
2007-2008	54.35%

ROCK SPRINGS HIGH SCHOOL

School Year: 2009-2010;

District: 1901000 – Sweetwater Number One

School: 1901056 - *ALL STUDENTS*

Analysis Period	Graduation Rate
2008-2009	72.94%
2007-2008	69.87%